



LightningMaster
Corporation

STAINLESS STEEL BEAM CLAMP



TYP (X) PLACES

STAG PATTERN
CATWALK ON
CELL AND HANDRAIL

DESCRIPTION: This stainless steel beam clamp comes with 3, 1/2" threaded holes for mounting vertically or horizontally. The beam clamp can be mounted on any ridge, flange, handrail, or I-beam less than an inch thick

This drawing is confidential and all rights are reserved. It shall not be reproduced, copied, lent or disposed of directly or indirectly, nor used for any other purpose than that for which it is specifically furnished
Model #LM-BC-SS

2100-A Palmetto St., Clearwater, FL 33765
800-749-6800

lightningmaster.com



LightningMaster
Corporation

CABLE BONDING LUG



DESCRIPTION: Stainless Steel Bonding Lug with 3 square inches of surface contact on flat metal. Cable Contact 1-1/2" under bolt tension.

- (4) gripping points on clamp to ensure positive bond.
- 1/0 cable tested to over 250lb pull without failure
- (4) 1/4" mounting holes
- (1) 1/2" mounting hole
- (1) 1" mounting hole

This drawing is confidential and all rights are reserved. It shall not be reproduced, copied, lent or disposed of directly or indirectly, nor used for any other purpose than that for which it is specifically furnished.

Model #LM-BL-SS

M=METAL

2100-A Palmetto St., Clearwater, FL 33765
800-749-6800

lightningmaster.com



LightningMaster
Corporation

C-CLAMP BONDING CLAMP



APPLICATION: Cast bonding clamp has 8 square inches of surface contact. C-type clamp allows easy installation on I-beams or other flat areas up to 1" thick. B

NOTE: Available in:

ALUMINUM (LM-CCBC-A)

BRONZE (LM-CCBC-A)

LEADED BRONZE (LM-CCBC-TC)

MODEL # LM-CCBC-M

*This drawing is confidential and all rights are reserved. It shall not be reproduced, copied, lent or disposed of directly or indirectly, nor used for any other purpose than that for which it is specifically furnished
Model #LM-CCBC-M*

2100-A Palmetto St., Clearwater, FL 33765
800-749-6800

lightningmaster.com



LightningMaster
Corporation

UNIVERSAL CABLE SPLICE



MAGS TYP (X) PLACES

PATTERN
ON
HANDRAIL

DESCRIPTION: Cast parallel cable spacer with single bolt tension and 1-1/2" of contact on cables and wires. Splicer may be used with full size cables or secondary bonding wire.

NOTE: Available in:

ALUMINUM (LM-CN-SPLICE-A)

BRONZE (LM-CN-SPLICE-C)

LEADED BRONZE (LM-CN-SPLICE-TC)

MODEL# LM-CN-SPLICE-M

This drawing is confidential and all rights are reserved. It shall not be reproduced, copied, lent or disposed of directly or indirectly, nor used for any other purpose than that for which it is specifically furnished Model #LM-CN-SPLICE-M

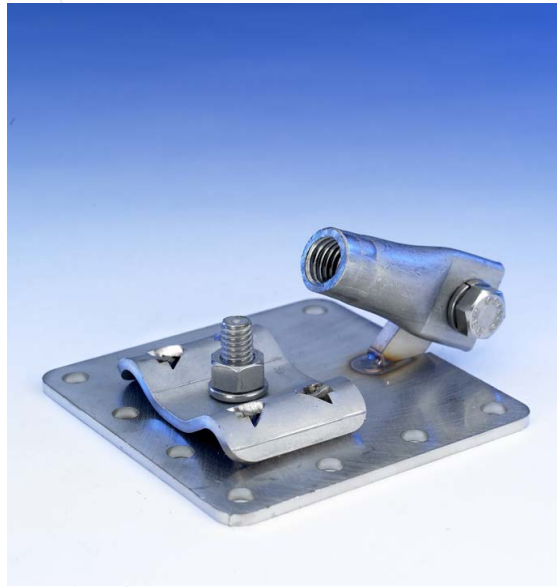
2100-A Palmetto St., Clearwater, FL 33765
800-749-6800

lightningmaster.com



LightningMaster
Corporation

UNIVERSAL SWIVEL BASE



APPLICATION: This is the most universal base in the industry. The swivel adaptor allows the air terminal to level under most conditions. It can be secured with screws, nails, ¼" bolts, ¼" drive-in anchors, or an adhesive. Bolt tension cap can be turned so the cable can run horizontal or vertical. Perfect for any uneven surface. Furnished for all air terminal sizes 3/8", ½", or 5/8", specify when ordering.

NOTE: Available in ALUMINUM (LM-FAB-SWIVEL-A)

BRONZE (LM-FAB-SWIVEL-C)

LEADED BRONZE (LM-FAB-SWIVEL-TC)

STAINLESS STEEL (LM-FAB-SWIVEL-SS)

MODEL #LM-FAB-SWIVEL-M

M=(METAL)

This drawing is confidential and all rights are reserved. It shall not be reproduced, copied, lent or disposed of directly or indirectly, nor used for any other purpose than that for which it is specifically furnished.

Model #LM-FAB-SWIVEL-M

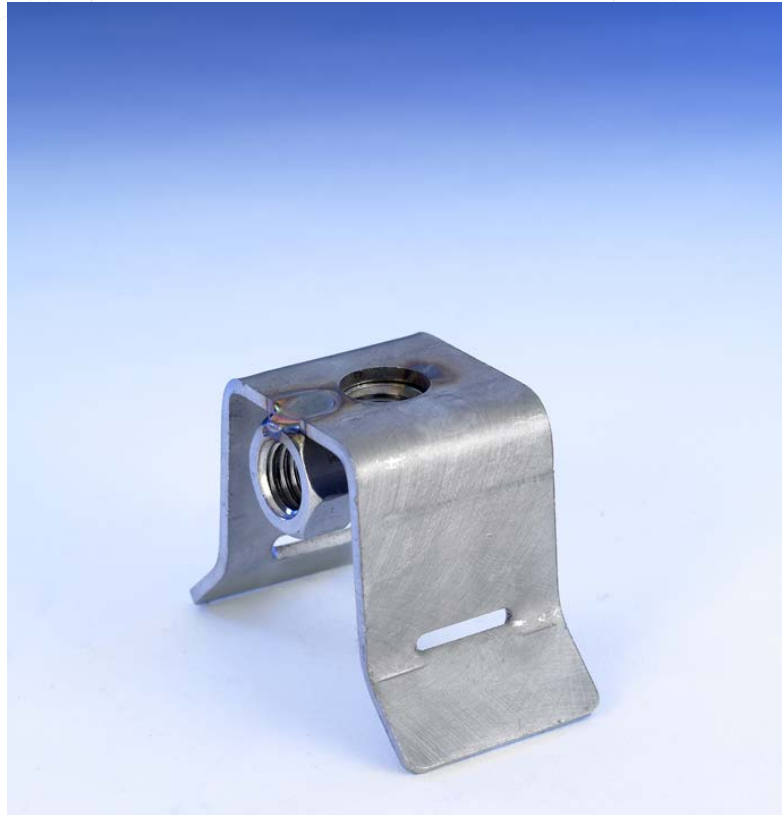
2100-A Palmetto St., Clearwater, FL 33765
800-749-6800

lightningmaster.com



LightningMaster
Corporation

STAINLESS STEEL SADDLE BASE W/ HOSE CLAMP



APPLICATION: This saddle base is used for securing an air terminal to pipes large in diameter. Saddle Base, Stainless Steel w/ 1/2" Nut & Hose Clamp (Fits up to 10" Pipe) Mounts Vertical & Horizontal. Please specify the pipe size when ordering, and additional hose clamp may be needed for pipes larger than 10" DIA.

NOTE: This saddle base also comes with an attached cable clip for running cable along PVC or any non-conductive material.

This drawing is confidential and all rights are reserved. It shall not be reproduced, copied, lent or disposed of directly or indirectly, nor used for any other purpose than that for which it is specifically furnished Model #LM-SB-SS

2100-A Palmetto St., Clearwater, FL 33765
800-749-6800

lightningmaster.com

U-BOLT BONDING CLAMP



LightningMaster
Corporation



APPLICATION: Cast U-BOLT bonding clamp provide 1-1/2" of surface contact on pipe and cable. Use with all full size conductors. Fits pipe sizes 1/2" to 6-3/4".

NOTE: NOTE: Available in ALUMINUM(A) /BRONZE(C) / LEADED BRONZE(TC) / STAINLESS STEEL (SS). Sizes available are as follows:

- 1" {LM-1-UBOLT-M)- Not available in SS
- 2" {LM-2-UBOLT-M)
- 3" {LM-3-UBOLT-M)
- 4" {LM-4-UBOLT-M)
- 6" {LM-6-UBOLT-M)

This drawing is confidential and all rights are reserved. It shall not be reproduced, copied, lent or disposed of directly or indirectly, nor used for any other purpose than that for which it is specifically furnished Model #LM-U-BOLT-M-XX

2100-A Palmetto St., Clearwater, FL 33765
800-749-6800

lightningmaster.com