

ALL PAYMENTS



ALL CHANNELS



ALL PLATFORMS

TCMx

Enterprise Settlement

CONIX has been the industry leader in bank settlement for over 20 years. We've built on that experience to provide TCMx™, an integrated, server-based, full-bank settlement system for all payments and all channels.

TCMx provides monitoring and settlement for mobile, RDC, image exchange, wire, check, ACH, and other payment systems.

TRADITIONAL SETTLEMENT FEATURES

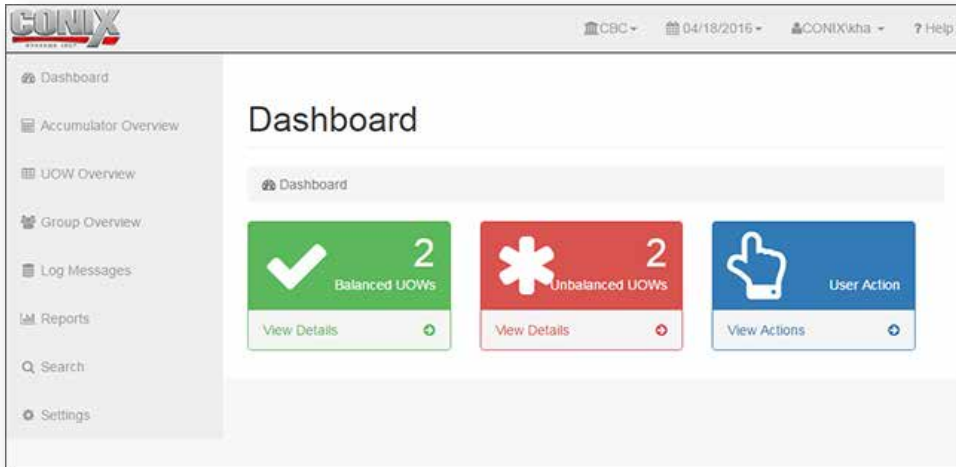
TCMx includes the most popular functions of CONIX's mainframe settlement product, The Control Machine (TCM®), the legacy industry standard for check environments. This base functionality includes the following:

- Accumulators that house captured item totals
- Accumulator groups
- Balancing tools
- Accumulator adjustments
- Accumulator holdover
- Debit / credit offsets
- Multi-bank capabilities
- Reports
- File extracts
- External file ingest
- Activity log

IMPROVED AND NEW FEATURES

TCMx significantly expands on these traditional features with the following enhancements:

- User-friendly point and click interface
- Dashboard display for high-level system status and important indicators
- Drill down to item level
- Accumulator Mapping Table that replaces three TCM control tables and most custom code requirements
- Search on endpoints, amounts, and item-level fields
- Emails triggered by error conditions
- Real-time transactions via API
- Unlimited multiple-day data retention
- Multiple sources of data
- Audit of user actions
- User roles to prevent unauthorized changes to settings
- Full-day or defined period (totals and/or item) extracts
- Expanded output file types



TCMx provides a real-time dashboard for control, display, and printing. The dashboard layout automatically adjusts to fit different devices (laptops, tablets, smart phones, etc.).

KEY BENEFITS

- **Migration tool** – TCMx's capability of taking input from various platforms simplifies parallel testing during item processing conversions and allows for staging the transition to production. The product also facilitates testing on new platforms, including FTM, NCR, and Alogent.
- **Enterprise-wide settlement** – A single system accommodates check, ACH, wire settlement, and other systems.
- **Batch and real-time item-level settlement capability** – The system supports both processes.
- **Browser-based access** – There is no need for software installation on user workstations.



CONIX Systems, Inc.
P.O. Box 2327
Manchester Center, VT 05255
800.332.1899
www.conix.com

