

FLB Series Shoebox Flood

FLOOD / SIGNAGE LIGHTING

100-277V

**LM79
LM80**

IP65



PROJECT INFORMATION

Project Name _____

Catalog No. _____

Date _____

DESCRIPTION

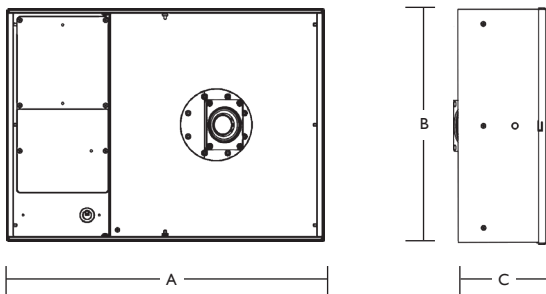
The ActiveLED® FLB Series Shoebox Flood is engineered as an energy efficient replacement for high wattage Metal Halide and High Pressure Sodium light fixtures. The design boasts our LUM-INTENSE™ LED Lighting Technology and delivers over 136 Lumens per Watt and a total fixture light output of 23,588 Lumens. Our factory will set the LED at 22.5° increments to direct light to desired area making it ideal for security lighting in areas such as Building and Property Perimeters.

Applications include: Tennis Courts, Building and Property Perimeters, Overpasses.



FLB Series Shoebox Flood

DIMENSIONS

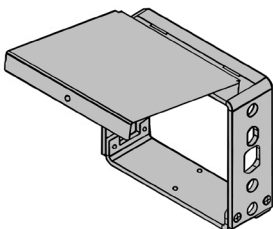


A	B	C
22.24"	16.24"	6.41"
56.48cm	41.24cm	16.28cm

FEATURES

- ThermalDRAW™ Cooling Technology - Patented cooling technology ensures LED components will equal or exceed warranty.
- LUM-INTENSE™ - LED lighting luminaire technology that combines recent advancements in LED Modules, Drivers and Optics to deliver more Lumens per Watt in a smaller package.
- LED Module can be factory set in 22.5° increments to direct light in desired area.
- Warranty - 10 Year Warranty on LED elements, fixture housing, and LED Driver. See page 2 for additional warranty information.

MOUNTING OPTIONS



Part # 00-27-0002-0003



Part # 00-27-0002-0015



LIGHT OUTPUT

23,588 lm

WATTS

172.8 W

LUMENS per WATT

136.5 lm/W

LIGHT COLOR (CCT)

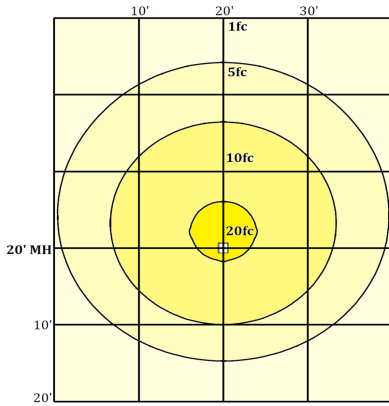
4970 K

ActiveLED®
Energy Efficient Lighting and Controls

NOTE: Lighting Facts shown for FLB9, 165W only.
For more Lighting Facts, visit lightingfacts.com for the Label and Label Reference Guide.



PHOTOMETRICS



PERFORMANCE DATA

AMBIENT TEMPERATURES	0 HOURS	45,000 HOURS	90,000 HOURS
77°F (25°C)	1.00	0.99	0.99
104°F (40°C)	1.00	0.98	0.96
131°F (55°C)	1.00	0.96	0.92
140°F (60°C)	1.00	0.95	0.90

Projected Lumen Maintenance (TM-21)

NOTE: Calculated using data collected according to LM-80 lumen maintenance on the LED package.

NOTE: Photometrics shown for FLB9, I65W only. Contact company for photometrics on other sizes.

GENERAL SPECIFICATIONS

Input Voltage	Auto-sensing, 100-277 Volts AC, 50/60 Hz	LED Optics	IP65 rated, thermally bonded LEDs, borosilicate glass lens w/silicone sealing. Patented thermal management mounting system
Input Power	165 LED Watts 173 Input Watts	CCT	2700K, 3000K, 3500K, 4000K, or 5000K
Power Factor	> 0.90 (at ~100-277 Volts)	Housing	Aluminum for enclosure and heat sinking parts, stainless steel hardware
THD	Total Harmonic Distortion (THD) <20% (typical 9.9%)	Finish	Powder coated after fabrication
Driver	Integrated driver with integral heat sink	Dimensions	16.24" Height, 6.41" Wide and 22.24" Length (41.24cm x 16.28cm x 56.48cm)
Operating Temperature	-58° F to 149° F (-50° C to 65° C)	Weight	30 pounds (13.6kg)
Lumen Lifetime	L90/90K Hrs @ 60° C (90,000 Hrs with 90% Luminous Flux)		

WARRANTY

Ten (10) Year Warranty - LEDs, Fixture, and Driver shall conform to its published specifications under normal usage and operating conditions including "no light loss" of more than 10% at the end of the period. LEDs will produce at least 90% of their initial light output with no color shift after 90,000 hours of operation.

LISTINGS AND TESTS

UL listed driver; CE, suitable for exterior locations. RoHS compliant. IP65 Rated optical assembly. LM-79 and LM-80 info available. Conforms to FCC Part 15.19 Subpart B Class A. Made in USA - ARRA Compliant.

ORDERING INFORMATION

Example: FLB9-SP-DF50R165BZ

FLB	9		D	F		R165	
Style	Voltage	Mount	Optics	Diffuser	CCT	Watts	Color
FLB	9	SP	D	F	50	R165	SL
FL Series Shoebox Flood	100-277 VAC, 50/60 Hz.	Square Pole Mount	Pattern	Clear Low Fe Glass (Over the LED only)	5,000K	165W LED, 173W Max	Silver
		4K			40		BK
		Knuckle Tenon End			4,000K		Black
					35		BR
					3,500K		Brown
					30		BZ
					3,000K		Bronze
					27		CG
					2,700K		Charcoal
							WH
							White
							X
							Custom