



TOMTM Total Outcomes Management

The user-friendly way to maximize patient outcomes management for better value across the entire patient continuum.

TOM is a population health application for managing day-to-day clinical performance. Achieve superior quality outcomes for pay-for-performance programs, including the 2017 Merit-Based Incentive Payment System (MIPS) and Alternative Payment Models (APMs) with TOM's drill-through reporting. The MIPS program is multifaceted and requires experience and agile software to navigate its complex framework. ReportingMD has the experience and software and is ready to support all reporting requirements under MIPS.

Benefits of TOM

- Manage disease outcomes
- Manage patient populations
- Patient severity indexing
- Powerful drill-through reporting
- Risk-adjusted data
- Greater access to reporting with cloud-based services
- Enhance quality care
- Consolidate disparate systems
- Achieve superior patient outcomes
- Secure data reporting
- Typically no additional work required by clinical staff
- Manipulate your data using ReportingMD's power grid
- Single sign-on capable

www.ReportingMD.com
888-783-5280



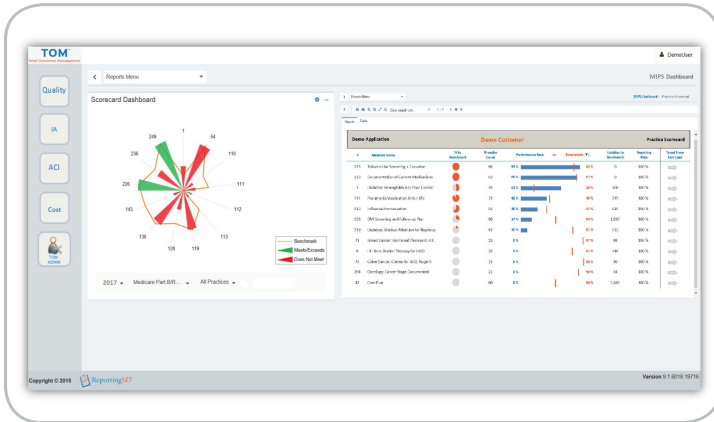
ReportingMD[®]

TOM™ Total Outcomes Management



Programs supported by TOM

- MIPS Quality
- MIPS Improvement Activities (IA)
- MIPS Advancing Care Information (ACI)
- Comprehensive Primary Care Plus (CPC+)
- Alternative Payment Model (APM)
- MIPS APMs
- Patient Centered Medical Home (PCMH)
- HEDIS/STARS



Practice - #68	Practice #2										Quality Decile Scoring	
	Deciles										Performance Score	Points Earned
21	1.00-1.90	2.00-2.90	3.00-3.90	4.00-4.90	5.00-5.90	6.00-6.90	7.00-7.90	8.00-8.90	9.00-9.90	10.00-10.00	81%	9.3
19	1.00-1.90	2.00-2.90	3.00-3.90	4.00-4.90	5.00-5.90	6.00-6.90	7.00-7.90	8.00-8.90	9.00-9.90	10.00-10.00	54%	6.6
41	1.00-1.90	2.00-2.90	3.00-3.90	4.00-4.90	5.00-5.90	6.00-6.90	7.00-7.90	8.00-8.90	9.00-9.90	10.00-10.00	69%	7.8
46.1	1.00-1.90	2.00-2.90	3.00-3.90	4.00-4.90	5.00-5.90	6.00-6.90	7.00-7.90	8.00-8.90	9.00-9.90	10.00-10.00	44%	6.1
46.2	1.00-1.90	2.00-2.90	3.00-3.90	4.00-4.90	5.00-5.90	6.00-6.90	7.00-7.90	8.00-8.90	9.00-9.90	10.00-10.00	62%	6.9
46.3	1.00-1.90	2.00-2.90	3.00-3.90	4.00-4.90	5.00-5.90	6.00-6.90	7.00-7.90	8.00-8.90	9.00-9.90	10.00-10.00	60%	6.8
47	1.00-1.90	2.00-2.90	3.00-3.90	4.00-4.90	5.00-5.90	6.00-6.90	7.00-7.90	8.00-8.90	9.00-9.90	10.00-10.00	80%	9.1
50	1.00-1.90	2.00-2.90	3.00-3.90	4.00-4.90	5.00-5.90	6.00-6.90	7.00-7.90	8.00-8.90	9.00-9.90	10.00-10.00	72%	8.2
52	1.00-1.90	2.00-2.90	3.00-3.90	4.00-4.90	5.00-5.90	6.00-6.90	7.00-7.90	8.00-8.90	9.00-9.90	10.00-10.00	83%	9.6
128	1.00-1.90	2.00-2.90	3.00-3.90	4.00-4.90	5.00-5.90	6.00-6.90	7.00-7.90	8.00-8.90	9.00-9.90	10.00-10.00	82%	9.3
130	1.00-1.90	2.00-2.90	3.00-3.90	4.00-4.90	5.00-5.90	6.00-6.90	7.00-7.90	8.00-8.90	9.00-9.90	10.00-10.00	88%	10.0
226	1.00-1.90	2.00-2.90	3.00-3.90	4.00-4.90	5.00-5.90	6.00-6.90	7.00-7.90	8.00-8.90	9.00-9.90	10.00-10.00	97%	10.0
317	1.00-1.90	2.00-2.90	3.00-3.90	4.00-4.90	5.00-5.90	6.00-6.90	7.00-7.90	8.00-8.90	9.00-9.90	10.00-10.00	88%	10.0

ReportingMD's Total Outcomes Management (TOM) v9 application, that incorporates our Quality Model System (QMS), is ONC Certified for data collection, translation, aggregation, and submission of all MIPS Quality, QCDR, and electronic Clinical Quality Measures (eCQMs). TOM v9's powerful measure calculation engine can take EHR data, QRDA1 files, CCD files, and other HL7 files and convert them to the QRDA3 file format. Our current system is certified to support data aggregation accurately through the 2017 reporting year. The TOM v9 EHR Module is 2014 Edition compliant and has been certified by an ONC-ACB in accordance with the applicable certification criteria adopted by the Secretary of Health and Human Services. This certification does not represent an endorsement by the U.S. Department of Health and Human Services. ReportingMD's TOM v9 application was certified on December 22, 2015; Certification ID# IG-3350-15-0069 using certification criteria 314(c) (1)-(3) and 314(g)(4) for all ambulatory CQMs.

ReportingMD is a CMS Qualified Registry and QCDR. We can report MIPS for individual providers or for Group practices for all MIPS performance categories. TOM's clinical data engine translates HL7, QRDA1, QRDA3, 835, 837, and XML files for submission to CMS and other entities. TOM is ready to support all new reporting requirements under MIPS.

*Client must have valid active license to use the TOM product. No other limitations or additional costs apply.



ReportingMD®

Learn more at www.ReportingMD.com
Or contact us at 888-783-5280 or at info@ReportingMD.com

