

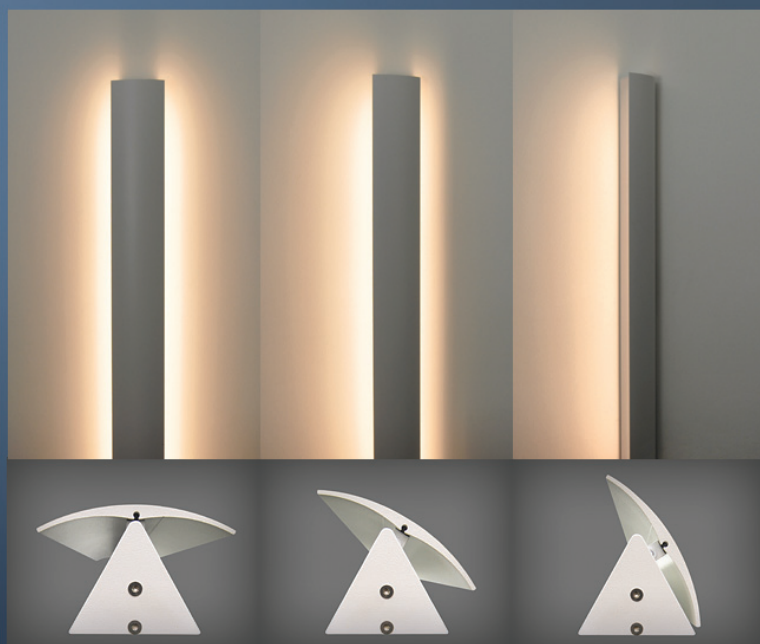
# DualLine LED

**ADA**

## Bi-Directional, Hand-Adjustable Linear Light Pattern with Locking Position

Break tradition with a dual linear light pattern LED. DualLine can be installed with universal orientation. Whether as a decorative wall sconce or a linear lighting accent, it's dual adjustable light pattern will enhance the simplest or most sophisticated interior and architectural designs.

### Adjustable Reflector Controls Light Pattern



Full

Partial

Half

- Bi-directional luminaire
- Uses only 5.5W /ft
- 87 CRI or greater
- 27K, 3K, 35K, 4K CCT
- 10 static color LED options
- Universal 120–277V AC
- IP20 for indoor use



Adjust reflector angle to your preference.

Reflector position lock.

Design • Performance • Sustainability



## DualLine



**DualLine** is a bi-directional indirect luminaire with an adjustable reflector to direct the output to suit your interior or lighting design. **DualLine** comes in a 1 ft or 4 ft lengths and 27K, 3K, 35K or 4K color temperatures. The housing is constructed of extruded aluminum with die-cast aluminum end caps and is IP20 rated for interior use only. Dimmable to 1% full brightness ELV trailing edge dimming.

**ADA Compliant**

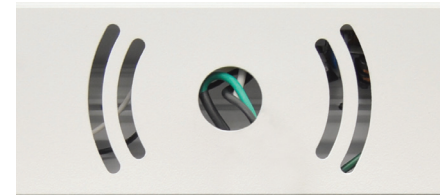
### How To Order

**Length** - Determine if a 1-foot or 4-foot fixture fits your design and layout. Remember that DualLine installs with universal orientation. Regardless of length, the fixture fastens to a single gang J-box using a butterfly pattern located in the center of the back mounting plate. Refer to website for installation guide.

**Voltage** - Input voltage uses a universal 120–277V AC LED driver. This product works with any voltage system in this range. DualLine uses only 5.5 Watts per foot.

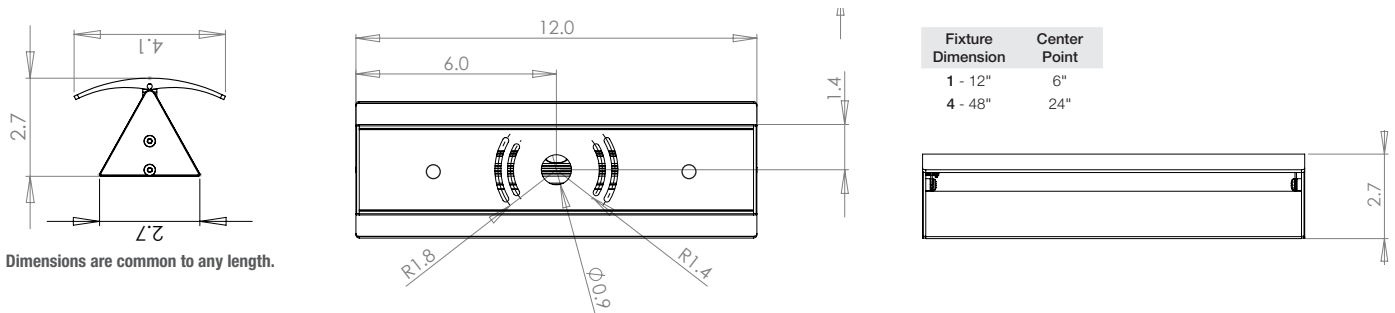
**Color Temperature** - Choose from a range of white LEDs to suit your setting. 2700K offers a warm and inviting temperature that's a little less bright. 3000K and 3500K are more neutral colors, slightly warm with added brightness. 4000K white has a brighter, cooler and more contemporary look. There are also 10 static LED colors available. (See below.)

**Finish** - The fixture's aluminum housing is painted using a durable 8-stage powder coat process. For maximum reflectance use our standard color White. Other standard colors include Black, Bronze, Silver as well as, any Custom Color.



Closeup of Mounting Plate

### Dimensions



### CATALOG NUMBER

EXAMPLE: DL-1-UNV-35K-WH

DL													
model		length		voltage		temperature				finish			
DL	DualLine	1	12"	UNV	Universal / 120V-277V	White		Non-White		BK	Black		
		4	48"			27K	2700K	PINK	Pink	AMB	Amber	BZ	Bronze
						3K	3000K	VIOL	Violet	BLU	Blue	SL	Silver
						35K	3500K	YELLOW	Yellow	RED	Red	WH	White
						4K	4000K	GRN	Green	GLDYW	Golden Yellow	CC	Custom Color
								LTBLU	Light Blue	SPGRN	Spring Green		

SS-DL-0617