

# HOMELESSNESS IN ORANGE COUNTY

## The Costs to Our Community

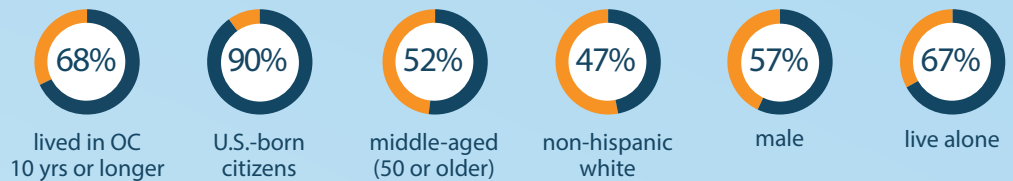
This **comprehensive** and **collaborative** study reveals the estimated costs of homelessness to OC and its 34 municipalities. It highlights the demographic and biographic characteristics of those experiencing homelessness. And, it assesses how costs vary from those living on the streets and in shelters vs. those living in alternative forms of housing.

### HOW MANY?

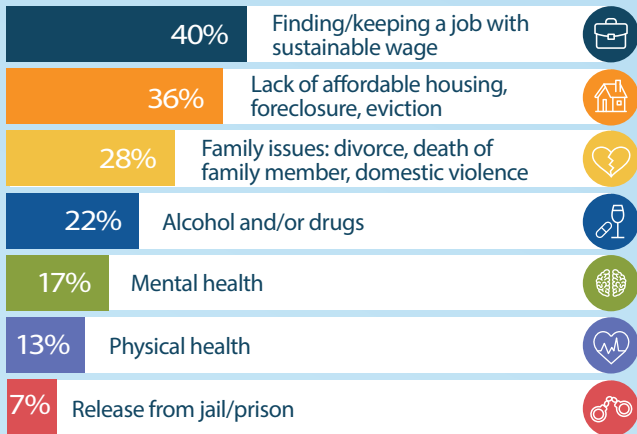
#### 2015 POINT IN TIME COUNT



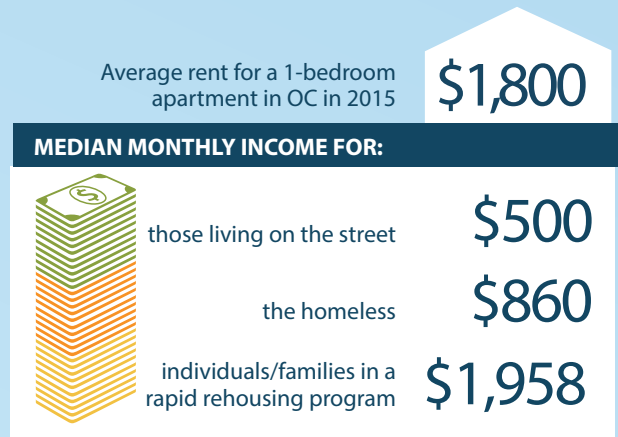
### WHO ARE THEY?



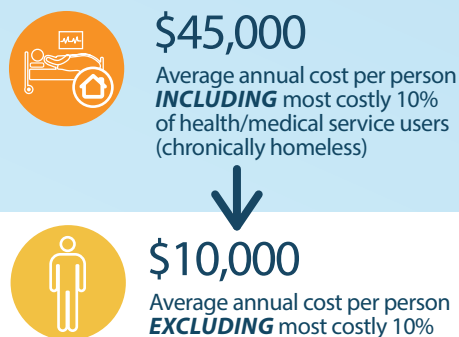
### Factors that contribute to homelessness:



### Income vs. housing cost



### WHAT IT COSTS?



### WHO PAYS?

#### How city and public service money is being spent on homelessness:



#### Total spending:



### HOW HOUSING REDUCES COSTS?

Annual overall costs per person:



**78%**  
fewer ambulance transports in last month



**100%**  
fewer arrests (vs. those chronically homeless living on street or in emergency shelters)

40% cost decrease

Permanent supportive housing **WITH** services

**\$51,587**



Chronic homeless/shelters **WITHOUT** supportive services

**\$85,631**



Annual health services costs per person:

Chronically street homeless

**\$98,199**



Permanent supportive housing

**\$43,184**



### PERMANENT SUPPORTIVE HOUSING: A COST-SAVING SOLUTION

Annual cost of services:

**\$51,587**

Permanent supportive housing

50% savings



**\$100,759**

Chronic street homeless

**\$55,332**

Permanent supportive housing

88% savings



**\$439,787**

Chronic street homeless  
**TOP 10% OF HEAVIEST SERVICE USERS**

Total cost savings per year :

**\$42M**

### WHAT'S NEXT?



**CREATE**

greater awareness and understanding



**FORMALIZE**

shared goals and defined roles



**DEVELOP**

increased housing goals with agreed-upon timeline



**PRIORITIZE**

populations to house first



**ASSESS**

and redeploy resources

Align + Collaborate + Bridge gaps = End OC homelessness

Download full report at:  
[jamboreehousing.com/oc-homelessness-cost-study](http://jamboreehousing.com/oc-homelessness-cost-study)

Infographic provided courtesy of Jamboree Housing Corporation.



Findings are based on data collected from five main sources: the County of Orange, the municipalities within the county, Orange County hospitals (via the Hospital Association of Southern California and Cal Optima), a sample of non-governmental agencies addressing homelessness and individuals experiencing homelessness themselves. Data was gathered through questionnaires sent to municipalities, hospitals, service agencies, as well as structured in-person survey interviews conducted with a sample of 252 homeless individuals throughout the county. Given the breadth and volume of data assembled, this is one of the most comprehensive studies of the public costs of homelessness in the United States.

The collaborative study by Orange County United Way, Jamboree Housing, and the University of California, Irvine, with the support of the Association of California Cities – Orange County (ACC-OC), 2-1-1 of Orange County, and the Hospital Association of Southern California, as part of the County's 10 Year Plan to End Homelessness and its new Office of Care Coordination.