

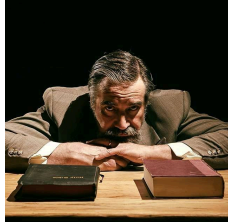
# MEET THE CAST



Amanda Williams Photography

**Andrew Lloyd Baughman (John Jasper/Clive Paget)** is the Producing Artistic Director of The Landless Theatre and an Associate Artist of Maryland Ensemble Theatre. LTC: *Sweeney Todd [Prog Metal Version]*; *Sweeney Todd, Nine/Guido*; REGIONAL: *Lippa's Wild Party/Burrs, Kiss Me Kate/Fred-Petruccio, Betrayal/Jerry*. [www.andrewlloydbaughman.com](http://www.andrewlloydbaughman.com)

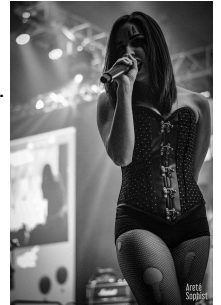
**Matt Baughman (Bazzard/Phillip Bax)** most recently appeared as Will in Quotidian Theatre's *Hobson's Choice*. LTC: *Dr. Horrible's Sing-A-Long-Blog/Moist, Evil Dead: The Musical/ Scott, and Gutenberg! The Musical/Doug*; NEXTSTOP: *Crimes of the Heart/ Doc, Boeing Boeing/Bernard*; MARYLAND ENSEMBLE THEATRE: *One Man, Two Guvnors/Alan-Alfie, The 39 Steps/Richard, House of Yes/Marty, and Killer Joe/Chris*.



Bruce Press Photography

**Tom Howley (Cedric Moncrieffe/Reverend Crisparkle)** holds an MFA in acting from Catholic University, and has been the steadfast Tech Director at Theater J (in the DC JCC) since 2004. REGIONAL: *Inherit the Wind, One Flew Over the Cuckoo's Nest, Little Shop of Horrors*. CONSTELLATION THEATRE: *Arabian Nights*.

**Lily Hoy (Edwin Droad/Alice Nutting)** last appeared as Katisha in *The Mikado*. Since has fronted Pennsylvania bands *Nitekast* and *Lies, Inc.*, and is currently the lead singer for the Maryland metal band *Master Sword*.



Artesophist Photography



**Ally Jenkins (Angela Prysock/Princess Puffer)** LTC: *Ethel Merman in Book of Merman, Spidermusical., Xanadu*. NEXT DAY THEATER AND RABBLE CREW PRODUCTIONS: *Space Cadets*; RORSCHACH: *Klecksography: The Island of Misfit Toys*; DOORWAY ARTS: *Morning Miranda* (world premiere).

**Melissa LaMartina (Helena Landless/Janet Conover)** is a Baltimore-based actor, director, and producer. Perhaps best known for her role as the title character in the horror-comedy film *CALL GIRL OF CTHULHU*, Melissa is also a stage actor, frequently appearing with the Baltimore Rock Opera Society among other Baltimore theater companies. Melissa's alter ego is the horror host Aurora Gorealis, who brings low-budget schlock and classic film delights to audiences every month at *SHOCKTAIL HOUR* in Baltimore.



**Simone Lewis (Rosa Bud/Dierdre Peregrine)** ADVENTURE THEATRE: *Ella Enchanted/Hattie*), *Knuffle Bunny/Puppeteer 2*; CAPFRINGE: *The Real World: Kabul/Maya*. ATLAS INTERSECTIONS FESTIVAL: *Sing Down the Moon/Balladeer*.

**Ben Ribler (Victor Grinstead/Neville Landless)** is a recent graduate of George Mason University with a BFA in Theater Performance, and is an AFYP Teaching Artist. ARENA STAGE: *The Great Society*; RED BRANCH: *Madagascar- A Musical Adventure*; CAPFRINGE: *Trey Parker's Cannibal! The Musical, The House of Yes*. [www.benribler.com](http://www.benribler.com)



Mia Pink Photography

**Josh Speerstra (Durdles/Nick Cricker)** LTC: *High Fidelity the Musical/Dick; Diamond Dead/Glitter, Cannibal The Musical/Alferd Packer*; as Dick. WSC AVAND BARD: *Dracula a love story, Les Justes and The Mistorical Hystery of Henry (I)V*.

**Steve Wannall (Chairman William Cartwright)** has appeared at Imagination Stage, the Folger Library, Discovery Theater, Keegan Theater, The Kennedy Center, and Charm City Players, but he is perhaps most recognizable for his work at the MD Renaissance Festival where he has performed with the hit comedy troupe Shakespeare's Skum for over twenty years. He is a founding member of the popular Cheeky Monkey Sideshow, the folk rock band The Drum Runners, the O'Danny House Party, and the vaudeville duo Walker & Wannall. Film and television appearances include: *The Last of the Mohicans, Ladder 49, Deep Impact, Dick, Serial Mom, Washington Square, and America's Most Wanted*. He can regularly be seen in Mt. Vernon's new interactive exhibit "Be Washington," and when he is not performing on stage or screen, Steve spends his time lending his voice to audio book productions for Graphic Audio and Audible. Steve appears courtesy of Actor's Equity Association.

