

Workers' Comp Cloud™ - Medical Bill Review



Comprehensive Medical Bill Review - Ensuring Data Integrity, Cost Containment and Lower Health Benefit Costs

Xybion's flexible, rules-based bill review engine combined with the power of our cloud platform will ensure best-in-class accuracy and turnaround time. The software platform is integrated in real-time with

the latest fee schedules, state-specific rules, clinical best practice guidelines and EDI connectivity to provider networks. The software delivers a high level of fee schedule automation to maximize your workers' compensation savings. Our intuitive and efficient user interface will allow your employees to be productive quickly. Here are some of the core Bill Review features:

More Than Just a Fee Scheduler:

The configuration of the bill review system is a consultative process. Our experience is that many clients have a broad range of claims philosophies and that while state legislatures and state regulators make rules, occasionally the state courts differ when litigation occurs. Many aspects of medical bill adjudication are option driven with almost infinite possibilities for custom configuration.

- Fee schedule values
- Out of network negotiation
- PPOs, MPNs and other specialty network connections
- Client specific business rules
- Standard and custom reporting, data analytics and business intelligence
- Accept bills in multiple formats (scanned, fax, mail, electronic, etc.)

Workers' Comp Cloud™ - Medical Bill Review

Medical Bill Review - Additional Features:

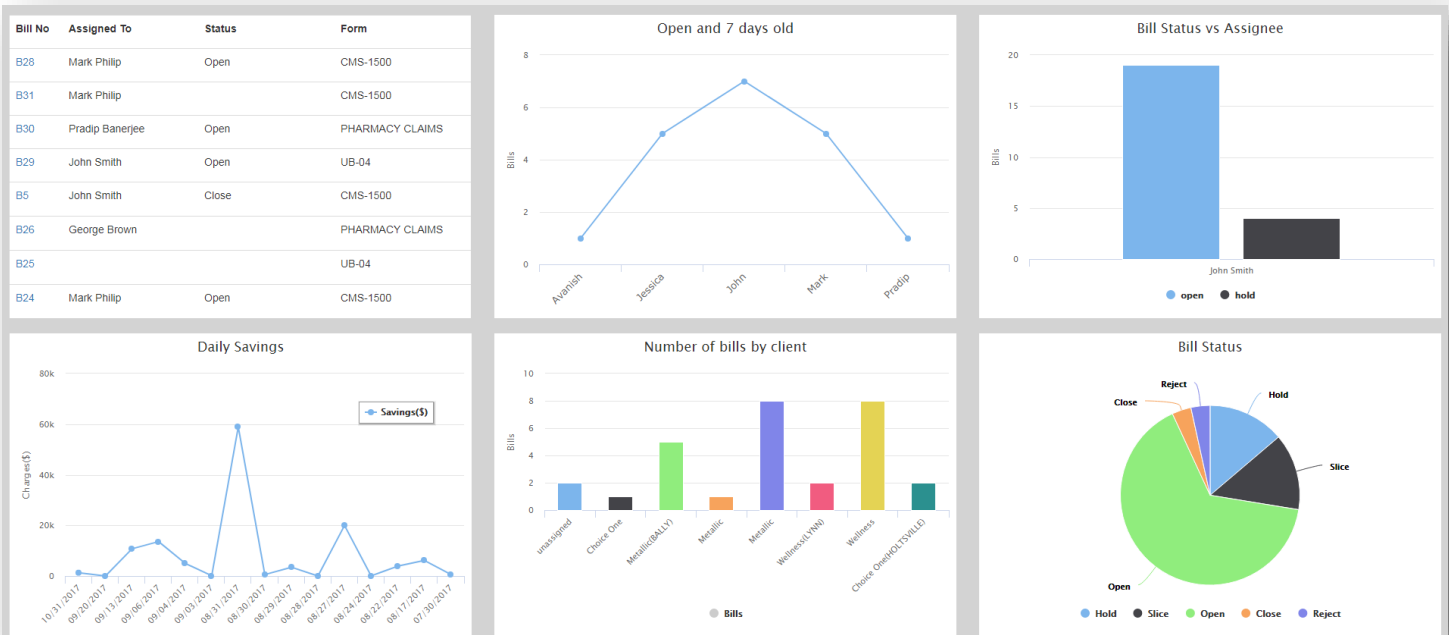
Appropriateness of Care - The platform reviews whether a provider can invoice for the service billed. Example – A Registered Physical Therapist may not bill for a physician office visit.

Unbundling - Since the supply or service was already allowed under a previous billing, the platform checks for this and determines that the “unbundled” code should be denied.

Duplicate Billing - The platform will identify and deny payment for services or supplies that duplicate previous charges.

Utilization Review - A platform warning can alert both the provider and the adjuster to potential over treatment and will request objective documentation from the provider.

Level of Service - The service would be reviewed as 99214 or 99213. However, the platform will prompt the user that the service 99215 requires a diagnosis that carries a high level of medical decision-making and a high risk of death or permanent disability and is therefore inappropriate.



Billing Dashboard: The billing review software platform includes a robust, real-time dashboard that displays KPI's and other key data sets that are role-based and integrate number of bills by client, daily savings, status of multiple bills, workload and assignee's information.

Workers' Comp Cloud™ - Medical Bill Review

Multiple Bill Intake Methods: Our interface provides multiple options and formats for billing that can save time and effort for the patients and the providers:

- EDI / FTP
- Scanned Bills / Fax
- Email / Mail
- Manual

The screenshot shows the 'Bill Intake' screen with the following details:

- Bill Date: 11/14/2017
- Review Assignee: Mark Philip
- KFI Assignee: Avansh
- Bill Status: Hold
- Bill Intake: KFI
- Diagnosis/CPT: Review
- PPO: Finalize
- Bill Id: B32
- Jurisdiction: 15001 (ALIIQUIPPA, PA)
- Type: MEDICARE
- Client: Med Client(SOUTH DEERFIELD)
- Patient: Search for Patients (Mega Darin, Austin Joseph, James Wood)
- Insured: Med Clinic(NECEDAH)
- Payee: Novitas Solutions(MECHANICSBURG)
- Rendering Provider: Jawad Shatt(ROCHESTER)
- Billing Provider: CMAP INTERPRETIVE SERVICES
- Jurisdiction: 15001 (ALIIQUIPPA, PA)

Buttons: Previous, Save Details, Next

The scanned form is a 'HEALTH INSURANCE CLAIM FORM' with fields for patient information, insurance details, and provider information.

Diagnosis and CPT Entry: It has all possible diagnosis options included that can be readily chosen and auto-populated minimizing data entry.

Along with this, it also has embedded rules that allow customizable triggers. For instance, when diagnosis codes do not support the CPT codes or services rendered, manual entry can be done.

The screenshot shows the 'Diagnosis/CPT' screen with the following details:

- Bill Date: 11/14/2017
- Review Assignee: Mark Philip
- KFI Assignee: Avansh
- Bill Status: Hold
- Bill Intake: KFI
- Diagnosis/CPT: Review
- PPO: Finalize
- Bill Id: B32
- Jurisdiction: 15001 (ALIIQUIPPA, PA)

Buttons: Previous, KFI Complete, Next

The interface shows a search for diagnosis codes with a dropdown menu listing options like (C434) Malignant melanoma of scalp and neck, (C444) Other and unspecified malignant neoplasm of skin of scalp and neck, and (17341) Basal cell carcinoma of scalp and skin of neck.

EDI Support: Integration with PPO networks is another added feature that evaluates pre-existing relationships with multiple PPO providers to assist with additional savings.

Bills that are uploaded to the CORE system, bridge directly to the network to include the contract rates applied and thereby save money for the patients.

Manage Interfaces

Search: Interfaces 4

+ Add Interfaces

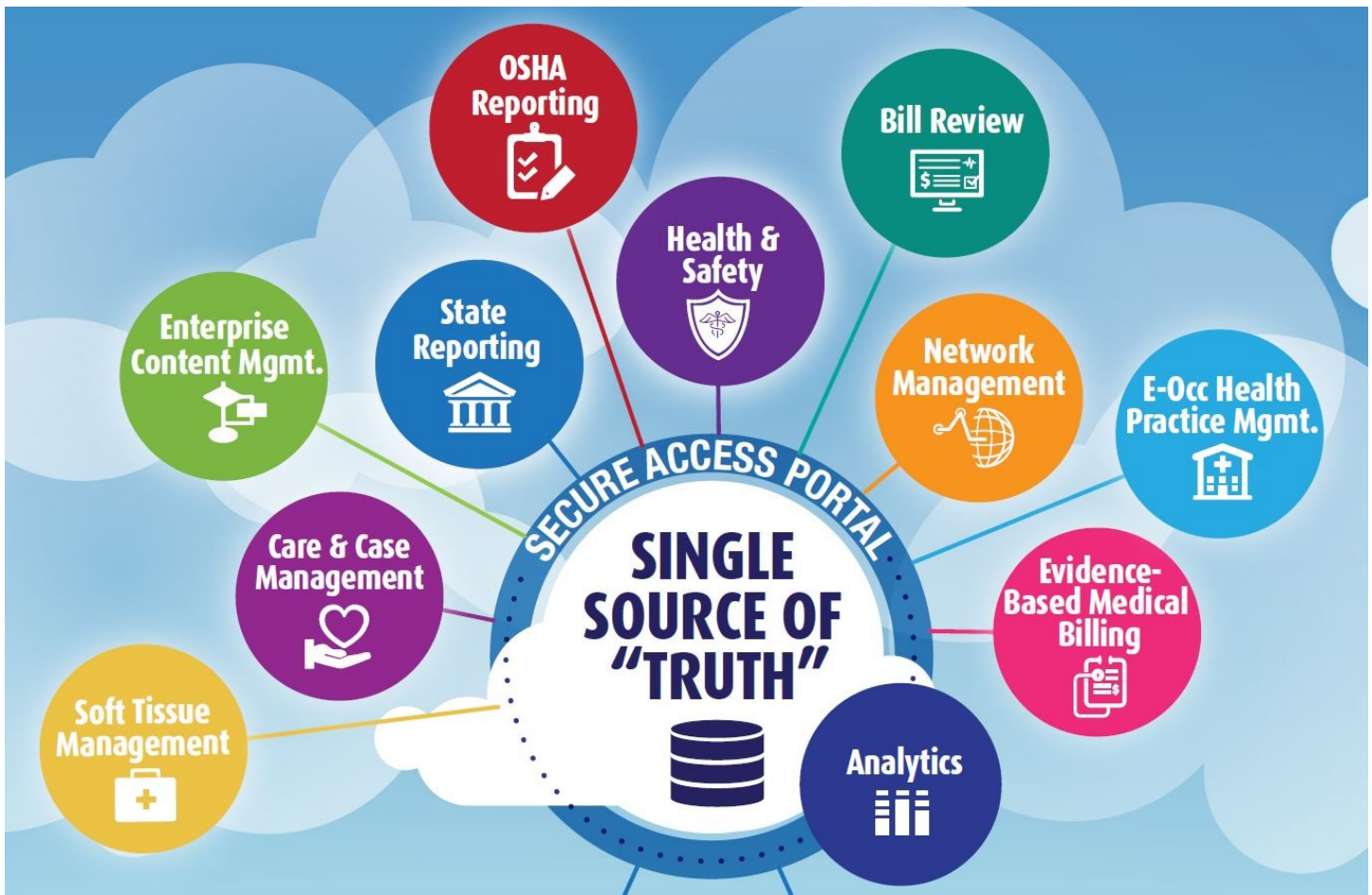
Interface Id	Interface Type	Name	Type	Version	Active	Actions
IF57	Inbound	Demo PPO 1	837P	1.0	✓	Edit Delete
IF50	Inbound	Medicare	837P	2	✓	Edit Delete
IF49	Inbound	Data from PPO	837P	1	✓	Edit Delete
IF48	Outbound	send to Availity	837P	1	✓	Edit Delete

1 - 4 of 4

First Previous 1 Next Last

Workers' Comp Cloud™

Evidence-Based Care, Claims & Compliance e-Platform



One Cloud... One Core Database... Multiple Interconnected Apps

Workers' Comp Cloud™ is a cloud-based, low-code, rapidly configurable new generation digital e-Platform that integrates process, quality and compliance management with Data Integrity; all within an integrated Content Management system. All of these data are in a single database, facilitating a "single source of truth," securely accessed in the cloud. It is purpose-built to manage the employee care, risk, safety and compliance for Employers, Insurance Companies and TPAs.

ACOEM, ODG, OSHA, digital ICD-10 billing and digital Bill Review are all integrated for seamless workflow and process management.

This mobile enabled platform allows you to have your own application, rapidly configure it to your business processes and have the comfort of knowing that you are working

from the same data used by the previous work step and the work step that you will hand over to next.

Workers' Comp Cloud is an e-Platform that enables all stakeholders within the process to streamline delivery and enhance efficiencies, while improving outcomes. With core functionalities that include OSHA, Soft Tissue Injury (STI), Medical Bill Review, Asset, and Enterprise Content Management; Employers, Insurance Carriers, Claims and Care Management Professionals can rapidly implement complete or complementary solutions configured specifically to meet their organization's distinct needs. With embedded statutory, Federal and Nationally recognized evidence-based guidelines, what better way is there to add consistencies, gauge program performance and drastically improve compliance.

Contact us today to see how we can help resolve your organization's Workers' Comp challenges.

Xybion Corporation
www.xybion.com
(609) 512-5790

 **Xybion Corporation**
Powering Innovation & Efficiency