

# ColourLine™ Wet

RGBW Linear Outdoor LED



## Features

- integral universal driver
- RDM control, NVLAP® tested
- 14 Watts /ft, up to 550 lm/ft
- ColourQuick  
shortest distance color mixing
- ColourClone  
fixture color clone accuracy
- ColourSoft  
smooth low trim dimming
- ColourMode  
RGBW & CCT tuning in one fixture



# ColourLine™ RGBW FEATURES

## ColourQuick RAPID-MIX COLOR



Colourline RGBW Fixtures provide the quickest color mixing in the industry. The SSL ColourQuick technology enables our Colourline Interior Cove and Grazer to mix instantaneously, within one inch.



## ColourClone TRU-COLOR RGBW MATCHING



As part of our manufacturing process, SSL Automated Manufacturing Robots calibrate every fixture to the exact same X,Y color coordinates to provide Step-1 like consistency. This process enables every fixture to be an exact clone. At the end of the process, a bar code is generated for every board. This allows for exact matching for job add-ons or warranty replacements.

## ColourSoft SMOOTH LOW-TRIM DIMMING

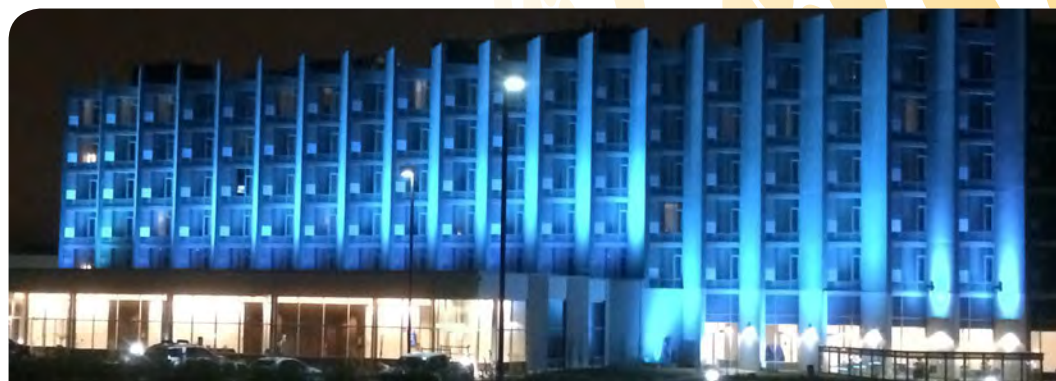


Standard dimming technology uses 8-bit resolution for 256 individual steps. Our 32-bit on-board MCU uses SSL developed software to provide 16-bit resolution that allows 65,536 steps of resolution and only use 8-bits of addressing space! We also use a logarithmic delineation of the resolution to concentrate in the lower third of the dimming curve so the low-end dimming and color transitions have zero flicker.

## ColourMode RGBW & TUNEABLE CCT IN ONE



SSL uses Digital Dual Mode (DDM) technology to provide RGBW and Tuneable CCT in one fixture! SSL firmware is designed to use 6 DMX channels in the DDM Personality Mode. Maximum Mood Enhancement is available to use for any type of environment. Channels 1-4 are reserved for RGBW. Channels 5-6 are used for CCT tuning. Channel 5 controls intensity while channel 6 controls CCT.





## ColourLine™ Wet

The quality of design resides in the efficiency and performance of ColourLine Wet. Functionality is attributed to the sensibilities given to RGBW color control and application needs. Our SSL brand ColourSelect Console allows 64 preset color light patterns for ease of control. Accessories for ColourLine Wet include Black Louvers for visual glare, Louver House Shield for cut-off along the linear side of the fixture, Landscape Spikes for flexible ground treatment and various length Cantilever Arms for surface and wall mounting.





## POWER

14W/ft of input power provides up to 550 lumens per foot at full power. Solid State Luminaires fixtures accept the full range of input power from 120VAC to 277VAC which provides maximum installation flexibility.

## OPTICS

CLWET offers 15 different optical choices to suit any application requirement. 10 x 10 provides a tight, controlled beam for wall grazing up to 30 feet. 10 x 60 allows grazing with beam overlap for a wider spread. 30 x 80 can be used as a grazer or wall wash for installations that need more wash coverage and 120 is an ideal wall wash solution.

## STANDARDS BASED

Solid State Luminaires line of RGBW products fully comply with the most up-to-date industry standards. The in-house developed RDM firmware is continually reviewed to keep up with the latest ESTA RDM and ACN standard released. This provides assurance that SSL RGBW products will interoperate with all RDM controls, devices and fixtures in the market that comply to the standard.

## PRECISION TESTING

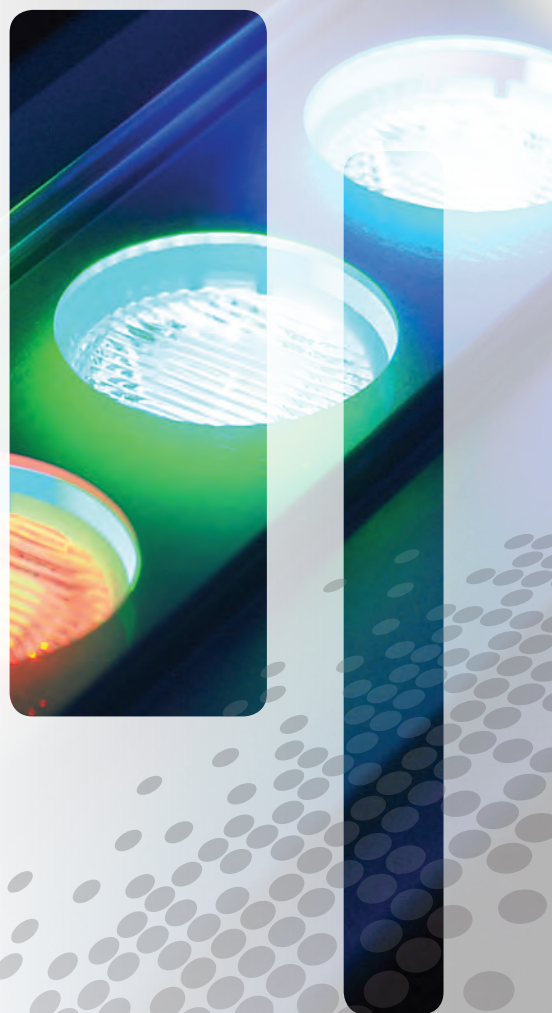
All data provided for SSL products are precision-tested by a NVLAP® accredited test facility.

## CONTRACTOR FRIENDLY

The CLWET uses an easy to install, adjustable mounting bracket to quickly apply fasteners and set the fixture angle. There's an optional higher clearance mounting bracket with 180° rotation.

## RUGGED

The CLWET family conforms to ANSI C136.1 vibration testing making the fixture an ideal solution for use on bridges and other extreme condition applications.



## MOUNTING OPTIONS

ColourLine RGBW is available in 1-foot and 4-foot lengths, scalable from small to large application design.

## Features

- Louvers & Cantilever Arms
- Building and Grounds Solutions
- Adjustable Brackets Standard
- Powder Coated Accessories



4-foot (CLW-4)  
48" - 10.4 lbs



1-foot (CLW-1)  
12.3" - 2.8 lbs

**Louver - (CLWL) House Shield - (CLWHS)**

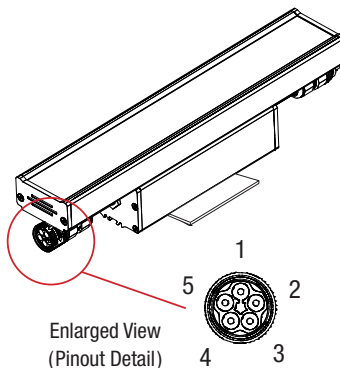
**Landscape Spike -** Lengths: 12" (CLWS1), 48" (CLWS4)

**Cantilever Arm -** Lengths: 6" (CA2/6), 12" (CA2/12), 18" (CA2/18)

**Mounting Brackets -** Standard 80° Adjustable and Full 180° option



Locking  
Connectors



Enlarged View  
(Pinout Detail)

COLOR KEY	
1	Black (+ Positive)
2	White (– Neutral)
3	Green (≡ Ground)
4	Red (<+ Data [+])
5	Orange (<- Data [-])

## Cord Lengths

- Starter Cord: 10 ft, 50 ft
- Extension Cord: 12", 24", 60"

**Required Per Run:** Starter Cable (SC10R), Terminator Cap (TCAPR)

**Maximum Run Length** = 100 feet @ 120V / 240 feet @ 277V



## CONTROLLERS

The key to a successful RGBW installation is having the proper level of control. ColourLine RGBW luminaires are compatible with the highest industry standards controllers. As a straight forward alternative we offer our SSL ColourSelect Console, with 64 programmable presets to ease your installation.

## Features

- Scalable to Large and Small Projects
- Most up-to-date industry standards
- Fixture Selection Control



## ColourSelect RGBW CONTROL



Colourline RGB products fully comply with the most up-to-date industry standards. The in-house developed RDM firmware is continually reviewed to keep up with the latest ESTA RDM and ACN standard released. This provides assurance that SSL RGBW products will interoperate with all RDM controls, devices and fixtures in the market that comply to the standard.



## ColourSelect Console

- Small to Mid-size Projects
- 64 Available Presets
- 2 Universe Control
- Console is RDM Compatible



## Pharos Controller

- Scalable to Enterprise Size Projects
- Touch Panel Simplicity
- Capable of RGBW and 0-10V Dimming
- Integration & Design Services available

