

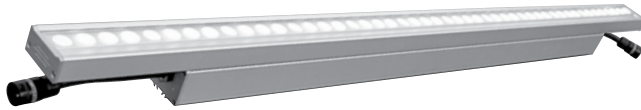
## *A Complete Solution for Dynamic, Color Changing Effects*

**COLOURLINE™ WET** is a high output luminaire that provides RGBW illuminating for high output grazing and wall wash applications. The **CLWET** family uses SSL developed firmware that is tested to the most current industry standard version of RDM. This technology allows our fixtures to interoperate with leading controllers and presents ease of configuration. Its small profile, IP66 fixture rated, sturdy construction, adjustable base with IP68 connectors make it easy to install in a variety of applications.

- **ColourClone (CC):** As part of our manufacturing process, SSL Automated Manufacturing Robots calibrate every fixture to the exact same X,Y color coordinates to provide Step-1 like consistency. This process enables every fixture to be an exact clone. At the end of the process, a bar code is generated for every board. This allows for exact matching for job add-ons or warranty replacements.
- **ColourSoft (CS):** Standard dimming technology uses 8-bit resolution for 256 individual steps. Our 32-bit on-board MCU uses SSL developed software to provide 16-bit resolution to provide 65,536 steps of resolution and only use 8-bits of addressing space! We also use a logarithmic delineation of the resolution to concentrate in the lower third of the dimming curve so the low-end dimming and color transitions have zero flicker.
- **ColourMode (CM):** SSL uses Digital Dual Mode (DDM) technology to provide RGBW and Tuneable CCT in one fixture! SSL firmware is designed to use 6 DMX channels in the DDM Personality Mode. Maximum Mood Enhancement is available to use for any type of environment. Channels 1-4 are reserved for RGBW. Channels 5-6 are used for CCT tuning. Channel 5 controls intensity while channel 6 controls CCT.
- **ColourQuick (CQ):** Colourline™ RGBW Fixtures provide the quickest color mixing in the industry. The SSL Colourquick technology enables our Colourline™ Interior Cove and Grazer to mix quickly, within a couple inches.

**Expanded Disclaimer:** Due to continuous development and improvements, specifications are subject to change without notice. Solid State Luminaires reserves the right to change lab test details or specifications without notice. Product use certifies agreement to Solid State Luminaires terms and conditions. Specifications stated within this document are in a phase of development and not posted as for sale or ready for sale in any commercial application. There are no warranties expressed or implied or are in any way associated with products that are stated as in development. Products demonstrated are intended to be for conceptual reference only.

# COLOURLINE™ WET



Type:

Fixture:

Project:

Approved:



## SPECIFICATIONS

color temperature

RGBW

## PHYSICAL

beam spread [a], [a x b]	 	6°   10°   10°x30°   10°x40°
		15°x30°   20°x40°   30°x60°   40°x40°
		30°x20°   40°x15°   50°x15°   60°x20°   80°x50°
LEDs	12 high-powered per foot	
lengths/dimensions [LxWxH]	1 foot (12.3" x 2.3" x 3.3")      4 foot (48" x 2.3" x 3.3")	
weight	1 foot (2.8 lbs)      4 foot (10.4 lbs)	
housing	marine grade, corrosion resistant, low-copper extruded aluminum housing, tooled end caps sealed with highly durable, bonded silicone gaskets; stainless steel fasteners	
lens	tempered glass - IK07 Rating	
mounting	die-cast aluminum surface mount brackets; standard provides 80° of rotation; optional 180° rotation bracket available	
ingress protection	dry, damp or wet locations IP66 rated : connectors IP68 (waterproof)	
vibration resistance	compliant with 3G ANSI C136.31 for bridge and roadway applications	
fixture connections	daisy chain with male and female twist and lock 5-PIN, IP68 rated connectors	

## PERFORMANCE

lumen output [ all on ]	605 Lms per foot (full power) @15W	268 Lms per foot (full power) @8W
lumen maintenance	> 70,000 hours / L70 or better	
protocols	DMX 512, RDM (ANSI E1.20)	
environment	operating: -4°F to 104°F (-20°C to 40°C)   start up: -4°F to 104°F (-20°C to 40°C)   storage: -40°F to 176°F (-40°C to 80°C)	
junction temperature	73°C @ T <sub>A</sub> 25°C	
color mixing	<b>ColourQuick</b> technology provides uniform beam saturation 3" from fixture surface (1.5" on center from vertical surface)	
color consistency	<b>ColourClone</b> manufacturing process uses robotic systems to provide step-1 like consistency by calibrating every fixture to the same exact X, Y, chromaticity coordinates	
resolution	4 distinct personality settings allow for 3 color resolutions of 1', 2' and 4' and 1'- 4' dual mode RGBW and color tuning	
dimming trim	<b>Colour Soft</b> embedded firmware enables 16-bit resolution using only 8-bits of data to enhance the low trim curve for no-flicker at the slowest transition speeds.	
personalization	<b>ColourMode (CM)</b> RGBW and tunable white in one fixture using 6 DMX channels. Channels 1-4 - RGBW : Channels 5-6* - CCT tuning (channel 5 = intensity and channel 6 = CCT) *CCT tuning mode must use the entire fixture as one unit.	
warranty	5 year limited warranty (refer to website for details)	

## ELECTRICAL

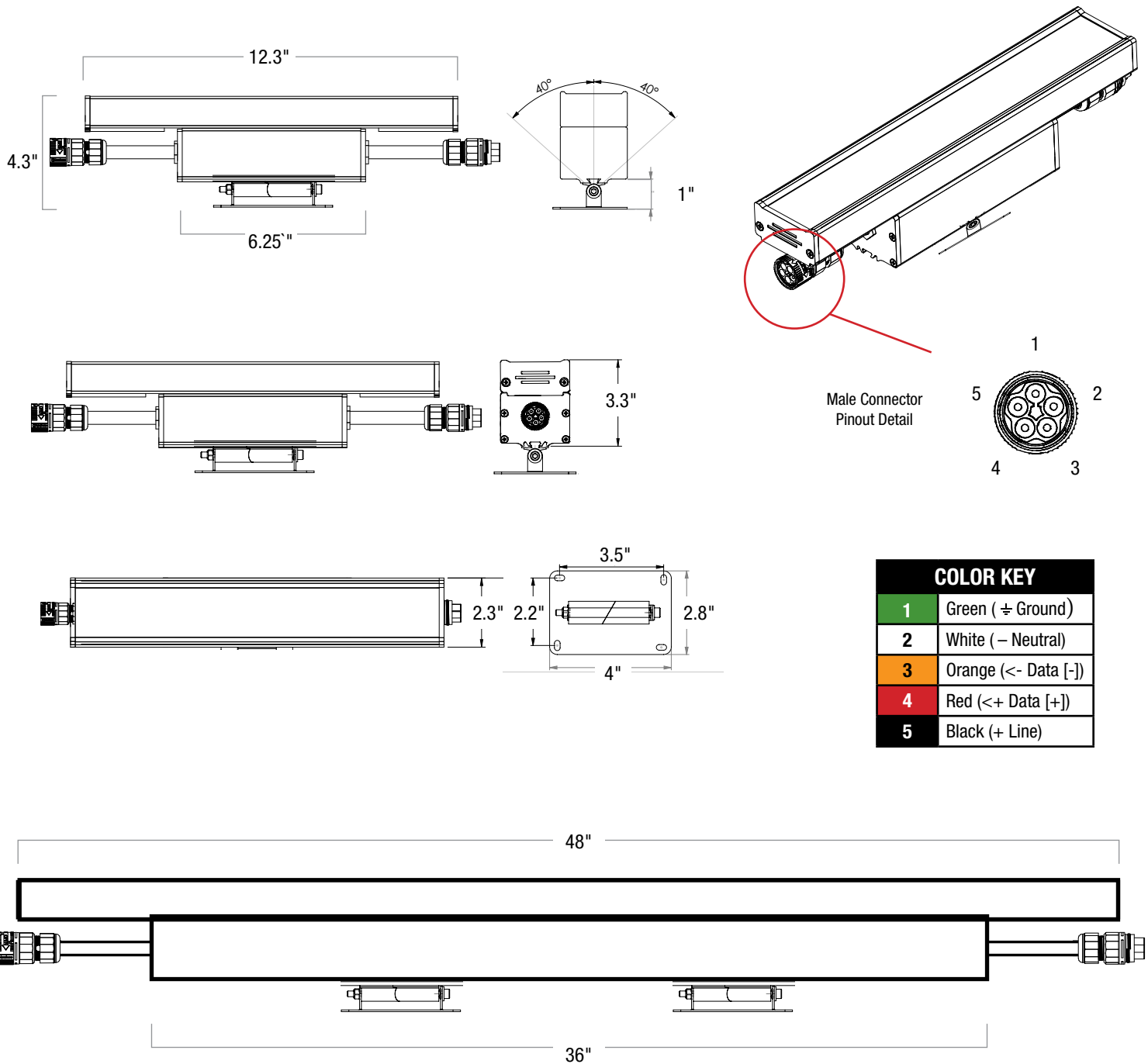
input voltage	Universal 120-277V AC	
power supply	integral Class II, electronic high-power factor 99% @ 120V	
controls	SSL Colour Select   Pharos controls   3rd party DMX 512, RDM standard based control system	
certification	ETL / cETL or CE, FCC-	
standards	UL-Class I / IES LM-79 / LM-80	
power consumption	15W @ 120V / 1ft    ( 54W @ 120V / 4ft )	8W @ 120V / 1ft    ( 28W @ 120V / 4ft )

**Expanded Disclaimer:** Due to continuous development and improvements, specifications are subject to change without notice. Solid State Luminaires reserves the right to change lab test details or specifications without notice. Product use certifies agreement to Solid State Luminaires terms and conditions. Specifications stated within this document are in a phase of development and not posted as for sale or ready for sale in any commercial application. There are no warranties expressed or implied or are in any way associated with products that are stated as in development. Products demonstrated are intended to be for conceptual reference only.



## DIMENSIONS WITH STANDARD BRACKET

REFER TO PUBLISHED INSTALLATION INSTRUCTIONS FOR MOUNTING AND INSTALLATION INFORMATION.

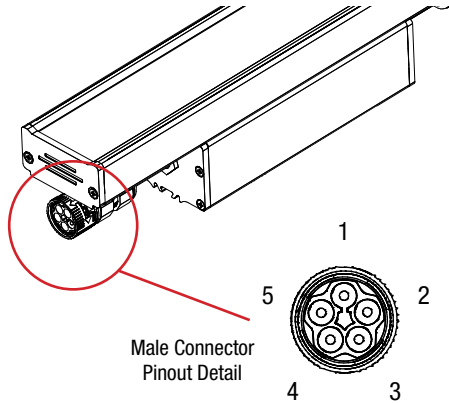


REFER TO PUBLISHED INSTALLATION INSTRUCTIONS FOR MOUNTING AND INSTALLATION INFORMATION.



# Connectivity Options

## CONNECTIONS & CABLES



COLOR KEY	
1	Green ( ± Ground )
2	White ( – Neutral )
3	Orange ( <- Data [-] )
4	Red ( <+ Data [+] )
5	Black ( + Line )

**A1:** MIN/.5" - MAX/.8" between fixtures

**A4:** MIN/0" - MAX/.6" between fixtures

**B:** SC10CLW - 10ft Starter Cord

**B:** SC50CLW - 50ft Starter Cord

**C:** EC12CLW 12 in. Extension Cord

**C:** EC24CLW 24 in. Extension Cord

**C:** EC60CLW 60 in. Extension Cord

Daisy Chain Fixtures (1')

**A:1**



Daisy Chain Fixtures (4')

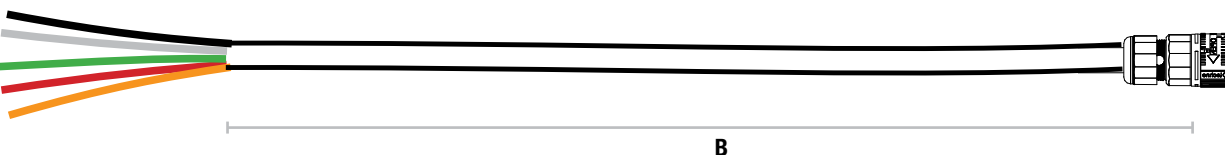
**A:4**



Arrows indicate the position for connectors. Line up arrows to make connection and tighten to create IP68 seal.

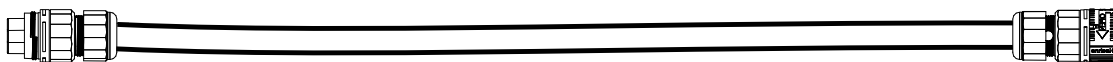


### B: LEADER CABLES



**B**

### C: EXTENSION CABLES



**C**

MALE CONNECTOR

### D: TERMINATOR CAP

TCAPDCLW Data cludes 120 Ω resistor



# Ordering Information

## PART NUMBERS

CLWET															
model		length		CCT		features		output		optics				options	
CLWET	COLOURLINE WET	1	12 in. [305 mm]	RGBW	RGBW	CQ	ColourQuick	15W	14W/ft	6	6° beam		3060	30°x 60° beam	
		4	48 in. [1219 mm]			CC	ColourClone	8W	8W/ft	10	10° x 10° beam		40	40°x 40° beam	
						CS	ColourSoft			1030	10° x 30° beam		3020	30°x 20° beam	
						CM	ColourMode			1040	10° x 40° beam		4015	40°x 15° beam	
						AF	All Features			1530	15° x 30° beam		5015	50° x 15° beam	
										2040	20° x 40° beam		6020	60°x 20° beam	
												8050	80°x 50° beam		

## Cable Accessories (Indicate the quantity needed for each item.)

**REQUIRED:** Starter Cable (SCD10R) and Terminator Cap (TCAPR) for every run. **Maximum Run Length** = 100 feet @ 120V / 240 feet @ 277V

_____ <b>SC10CLW</b> 10 ft. Starter Connection Cord	_____ <b>EC24CLW</b> 24 in. Extension Cord
_____ <b>SC50CLW</b> 50 ft. Starter Connection Cord	_____ <b>EC60CLW</b> 60 in. Extension Cord
_____ <b>TCAPDCLW</b> Data Terminator Cap (includes 120 Ω resistor)	_____ <b>SCD10CLW</b> 10 ft. Data Starter Connection Cord
_____ <b>EC12CLW</b> 12 in. Extension Cord	_____ <b>SCD50CLW</b> 50 ft. Data Starter Connection Cord

## Mounting Options (Indicate the quantity needed for each item.)

_____ <b>CLWFA</b> Full 180° Adjustable Bracket	_____ <b>CA2/6</b> Cantilever Arm - 6"	_____ <b>CA2/18</b> Cantilever Arm - 18"
_____ <b>CLWS</b> Landscape Spike	_____ <b>CA2/12</b> Cantilever Arm - 12"	

## Control Components (Indicate the quantity needed for each item.)

_____ <b>PDX</b> Power Data Wiring Box ( <i>exterior rated</i> )	_____ <b>DXC-25</b> 25 foot Exterior rated DMX cable
_____ <b>CSC-1</b> Colour Select Controller ( <i>includes 48 standard preset scenes</i> )	_____ <b>DXC-50</b> 50 foot Exterior rated DMX cable
_____ <b>CL-RS4</b> Colourline 4 part interior rated RDM splitter ( <i>with power supply</i> )	_____ <b>DXC-100</b> 100 foot Exterior rated DMX cable
	_____ <b>CD-25</b> 25 foot controller data cable
	_____ <b>CD-50</b> 50 foot controller data cable
_____ <b>PHAROS TPC-BN</b> Touch Panel Controller - Black on Nickel ( <i>512 Channels EDMX</i> )	_____ <b>CD-100</b> 100 foot controller data cable
_____ <b>PHAROS EXT</b> Extension for TPC Connectivity	

Controller Data Cables/DMX Cables listed are exterior rated cable.  
(Belden 3105A or equivalent) CD cables have male XLR at one end.

