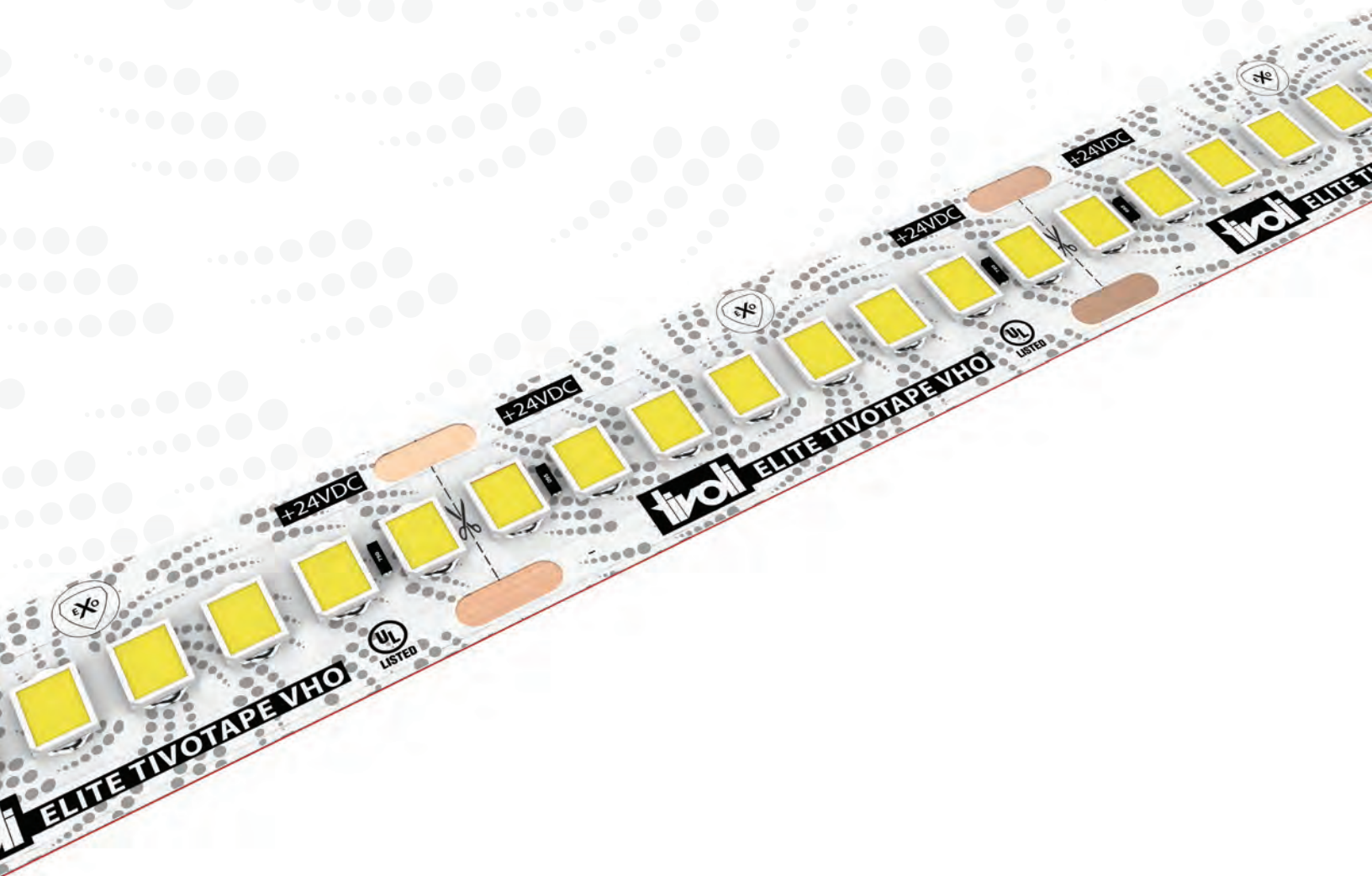




# ELITE

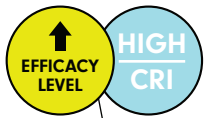
ZERO DROP TECHNOLOGY



SB, HO & VHO ELITE TivoTape™



Lighting Designer: Synalovski Romanick Sayers, Ft Lauderdale FL



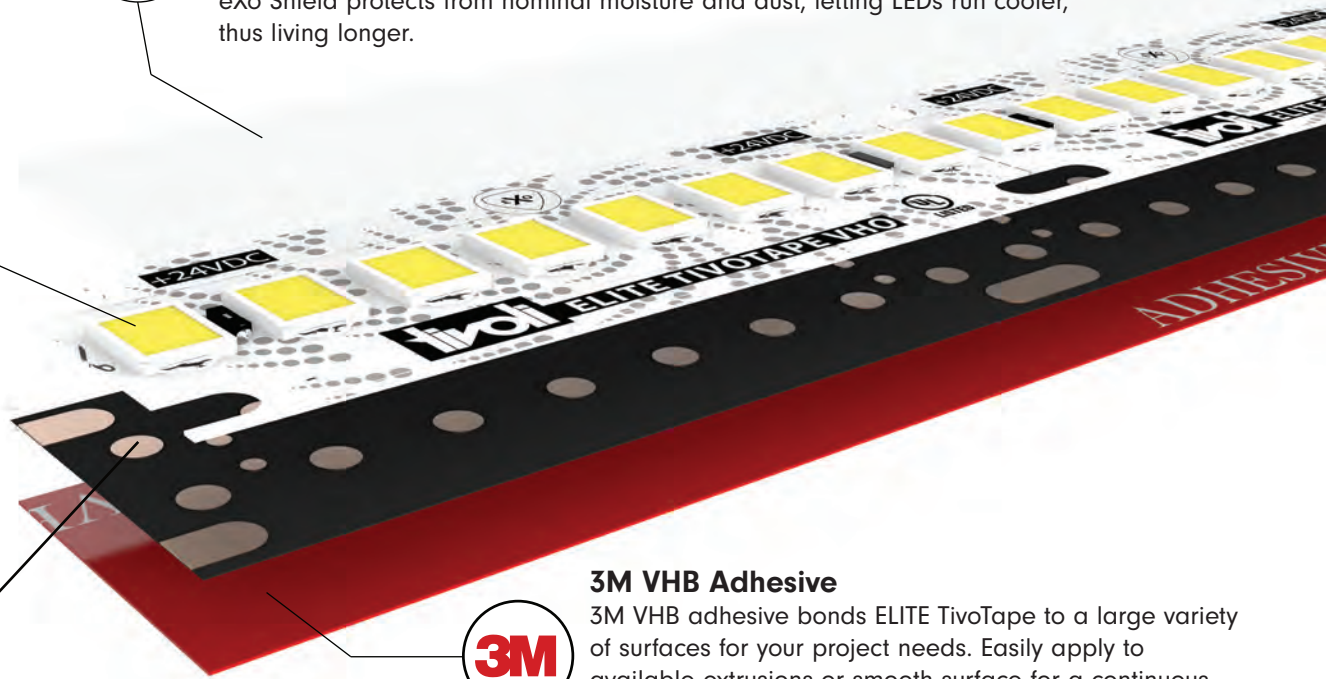
**LED Package**

ELITE TivoTape™ offers a High Color Rendering Index of up to 96 with an R9 of 83, making colors pop with 94+ CRI. At 100-118LM/W efficacy the tight LED spacing of the 2835 diodes produces zero scalloping within our narrowest depth profile and a binning tolerance of 1.5 MacAdam Ellipse keeps consistent color throughout your project giving you expected results in quality lighting.



**eXo Shield**

eXo Shield's ultra-thin coat seals the electronic component and circuitry with an IP54 standard resulting in no color shift, while remaining clear and flexible. eXo Shield protects from nominal moisture and dust, letting LEDs run cooler, thus living longer.



**3M VHB Adhesive**

3M VHB adhesive bonds ELITE TivoTape to a large variety of surfaces for your project needs. Easily apply to available extrusions or smooth surface for a continuous even illumination without bends or rises from poor adhesive performance.

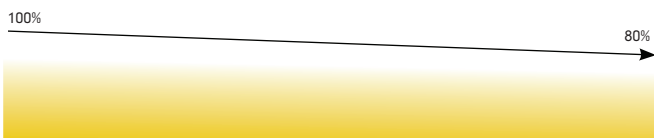


**4oz. Copper Trace**

ELITE TivoTape's™ 4oz. Copper trace allows for unparalleled thermal and electronic management that equals longer runs with virtually no lumen drop. Traditional tapes utilize 2-3oz. traces which prove to reduce voltage over distance thus reducing maximum run lengths. When voltage drops so do lumens toward the end of each maximum electronic run length. In some popular design elements, this can result in gradations of intensity in the desired effect. ELITE TivoTape™ has solved this issue with another industry first by Tivoli. Additionally, 4oz. traces provide greater durability and thermal management which can increase the overall systems life time.

**ELITE TivoTape's™ 4oz. Copper trace yields virtually no lumen drop over maximum electrical run distance.**

(Diagrams below are for illustration purpose only and do not reflect actual light distribution)

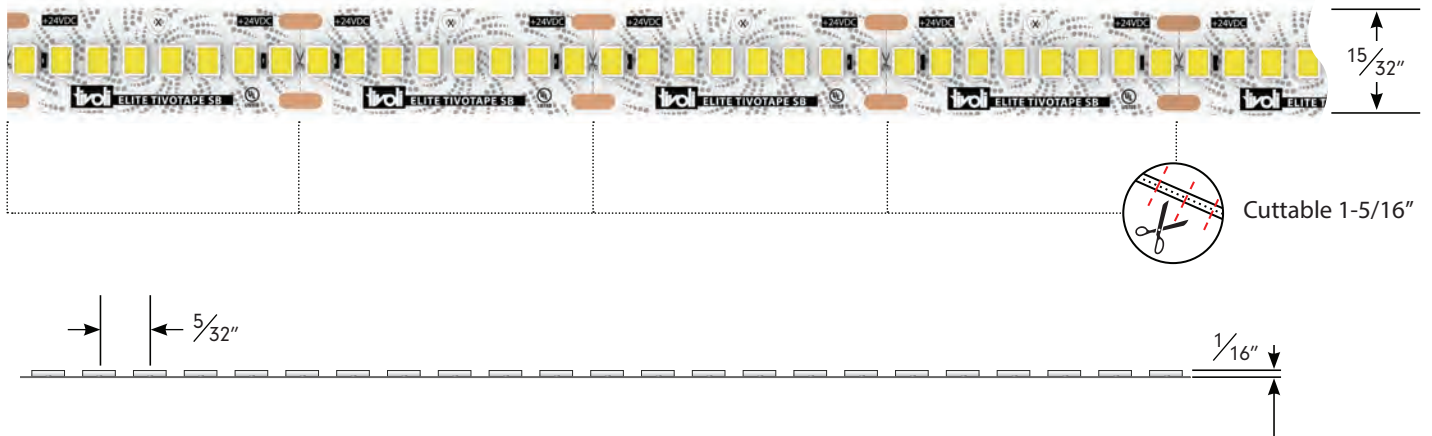


Typical 3oz. trace produces lumen drop over maximum electrical distance.



ELITE TivoTape™ has a 4oz. Copper trace, caring equal power across the entire run length giving you even illumination from beginning to end!

## Standard Brightness (SB)



3.2W/ft  
355LM/ft



4oz. Trace



High Efficacy



95 CRI



Compliant



VHB Adhesive



IP54



eXo Shield



2200K



2400K



2700K



3000K



3500K



4000K



5000K

## Ordering Information



PRODUCT CODE	INTENSITY	INSTALL	LED COLOR	VOLTAGE
TPLE	SB	I		24

TPLE = TivoTape ELITE

SB = Standard Brightness

I = Indoor

22 = 2200K

24 = 2400K

27 = 2700K

30 = \*3000K

35 = 3500K

40 = 4000K

50 = 5000K

24 = 24V DC

### End Preps (see page 19)

Please specify type at time of ordering.

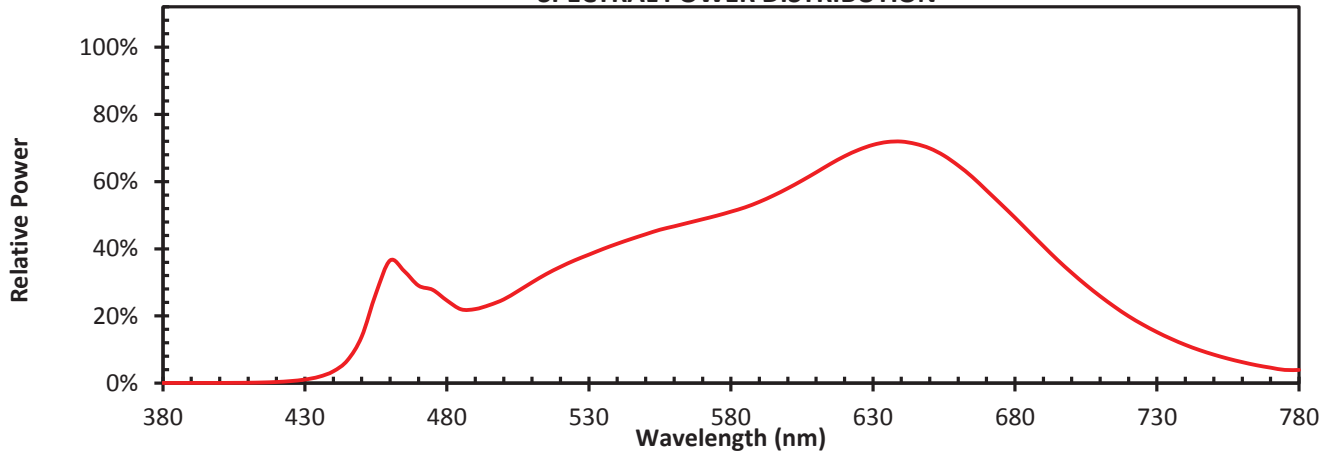
### Lengths

Please specify lengths at time of ordering.

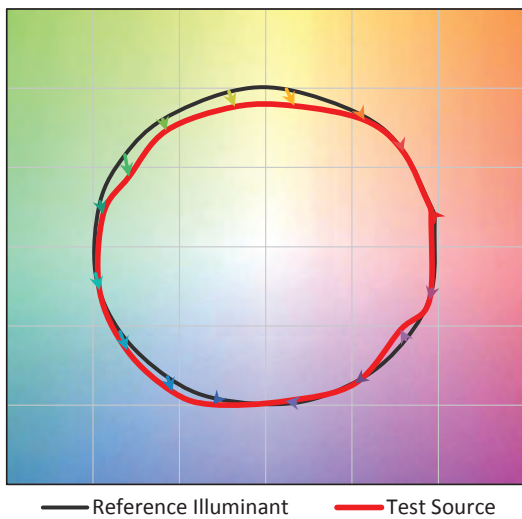
\*This product is in compliance with the California Energy Code Title 24 JA8-2016 in 3000K and only when incorporating a specific power supply.

SB IESNA TM-30-15

SPECTRAL POWER DISTRIBUTION



COLOR VECTOR GRAPHIC

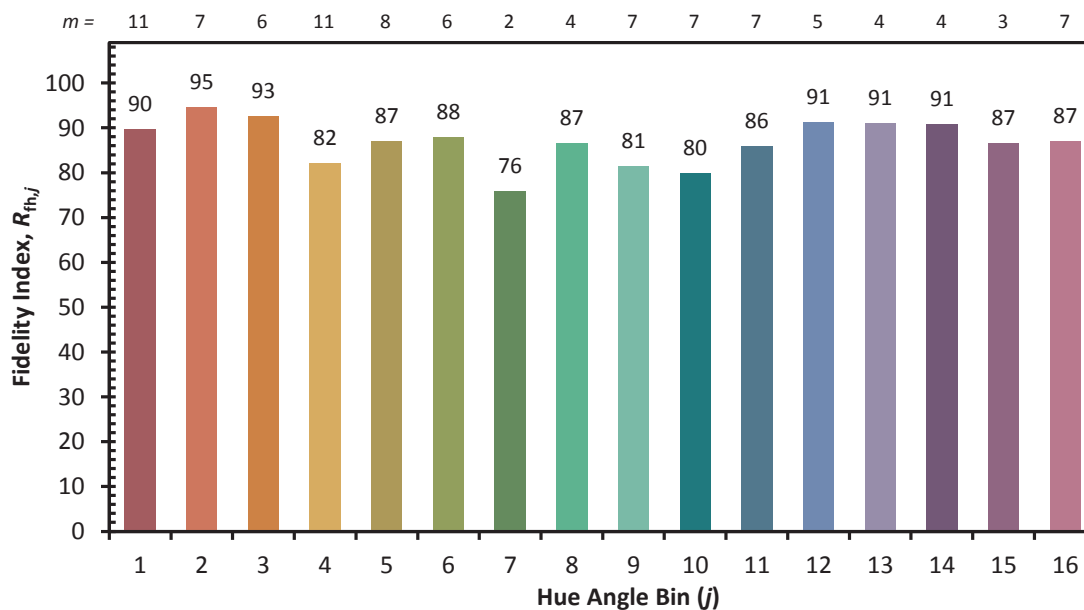


HUE BIN	FIDELITY INDEX	CHROMA % SHIFTS	HUE % SHIFTS
1	90	-1%	3%
2	95	0%	-1%
3	93	-2%	-3%
4	82	-9%	-7%
5	87	-10%	-1%
6	88	-7%	-2%
7	76	-10%	-10%
8	87	-3%	-7%
9	81	-0%	-11%
10	80	-3%	-12%
11	86	-6%	-7%
12	91	-4%	-2%
13	91	-2%	-5%
14	91	1%	-5%
15	87	-6%	3%
16	87	0%	-7%

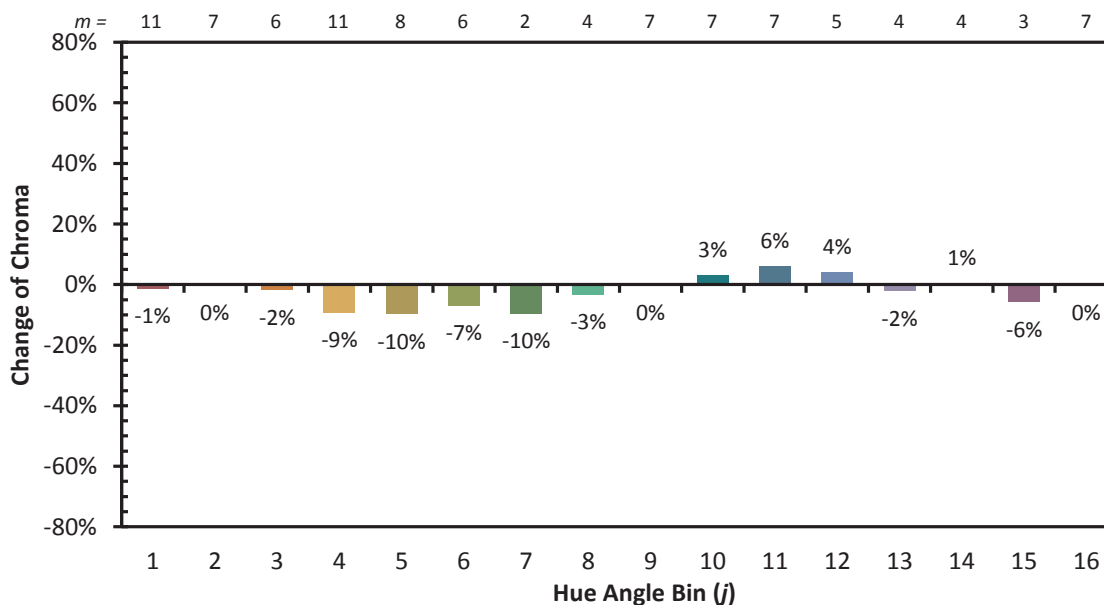


SB IESNA TM-30-15

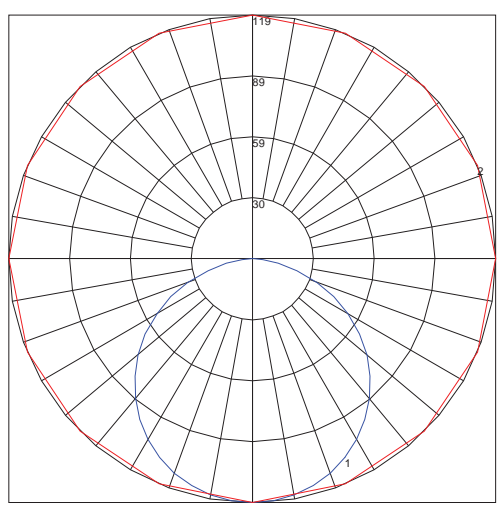
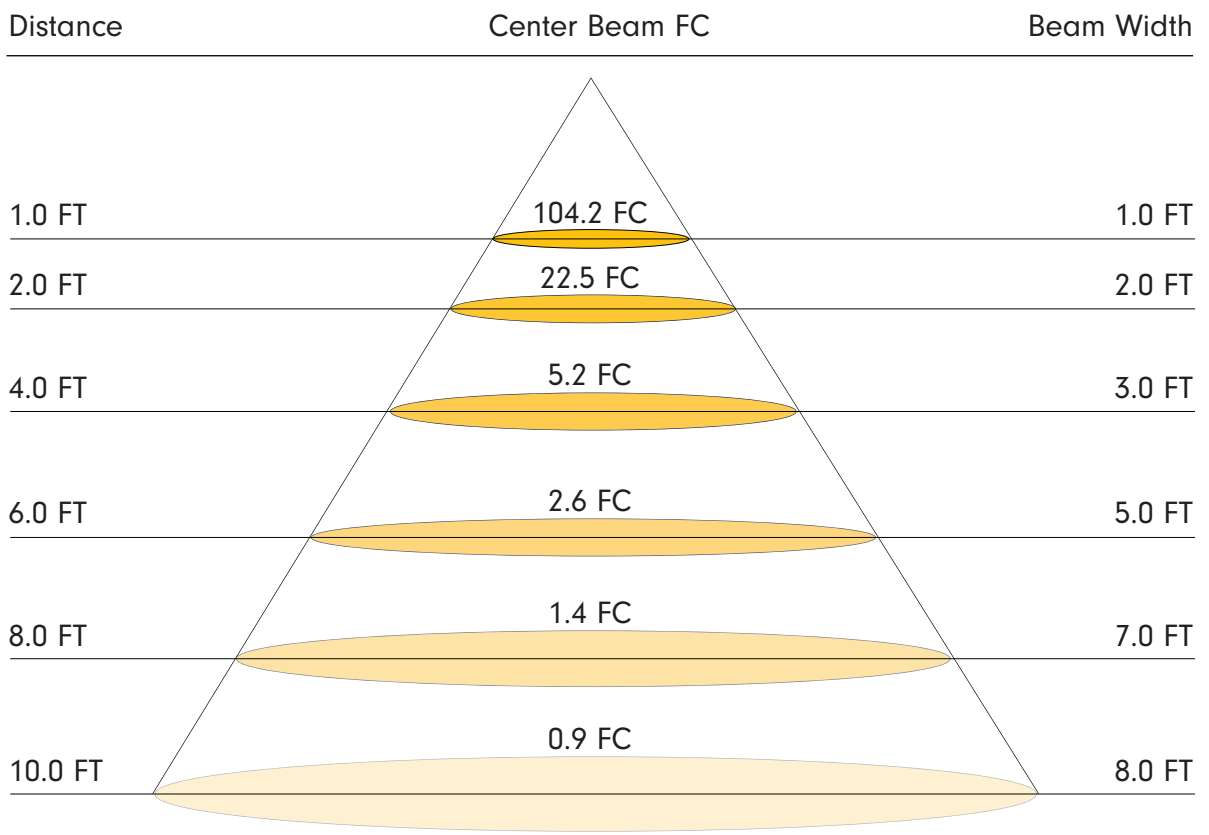
Hue Angle Bin vs. Fidelity Index



Hue Angle Bin vs. Change of Chroma



**SB Photometric Data (Based on 3000K / 1' strip)**



Maximum Candela = 118.58  
 Located At Horizontal Angle = 0  
 Vertical Angle = 0  
 #1 Vertical Plane Through Horizontal Angles (0-180) (Through Max. Cd.)  
 #2 Vertical Cone Through Vertical Angle (0) (Through Max. Cd.)



SB Data

Electrical & Photometric Data (Based on 95 CRI / 3000K)							
Input Voltage	24V DC						
Dimming Option	MLV/ELV/0-10V						
Power Supply	Class 2						
Wire Size (End Prep)	18 AWG, 2 wire						
Power Consumption	3.2 W/ft.						
Color Temperature (CCT)	2200K	2400K	2700K	3000K	3500K	4000K	5000K
Lumen Output	317	333	352	355	362	378	381
Efficacy	100	104	110	111	113	117	119
Color Rendering Index (CRI)	99	97	97	97	94	93	90
R9	93						
TM-30-15 Fidelity Index ( $R_f$ )	87						
TM-30-15 Gamut Index ( $R_g$ )	95						

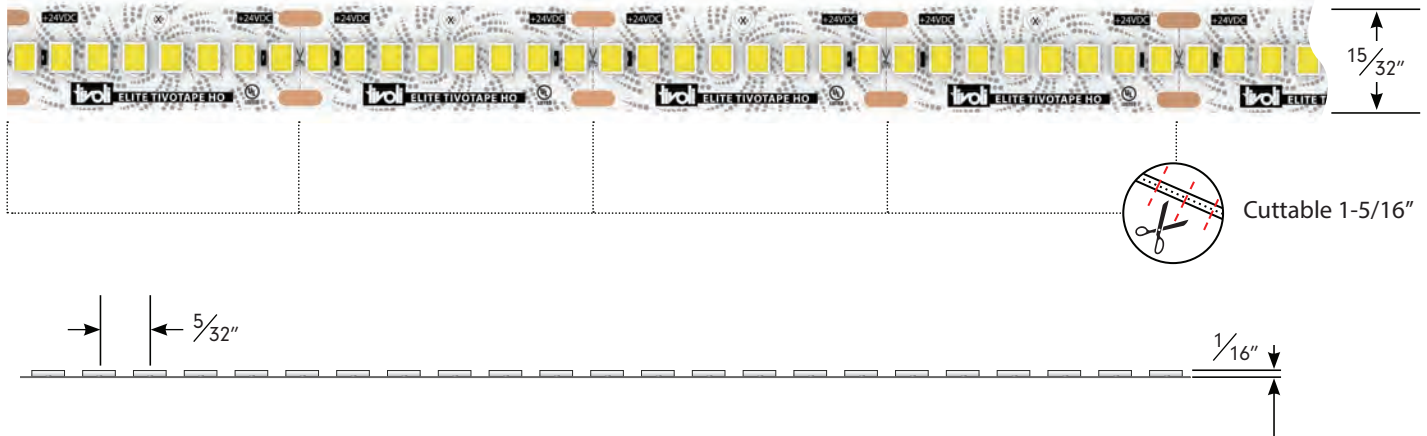
Physical	
LED Package	2835
Cut Increments	1 5/16"
LEDs/ft	73
Operating Temperature	-40°F (-40°C) ~ +140°F (+60°C)
Environment	IP54 Damp Location, Conformal eXo Shield Coated
Maximum Run Length	29'
Copper Trace	4 Ounce
Adhesive	3M VHB Tape
Dimension	15/32" (12mm)

Performance	
Certification	UL Listed
Lumen Maintenance (L70) Hours	60,000
Binning Tolerance	1.5 Step MacAdam Elipse
Warranty	5 Years





## HIGH OUTPUT (HO)



4.5W/ft  
518LM/ft



4oz. Trace



High Efficacy



95 CRI



Compliant



VHB Adhesive



IP54



eXo Shield



2200K



2400K



2700K



3000K



3500K



4000K



5000K

## Ordering Information



PRODUCT CODE	INTENSITY	INSTALL	LED COLOR	VOLTAGE
TPLE	HO	I		24
TPLE = TivoTape ELITE	HO = High Output	I = Indoor	22 = 2200K 24 = 2400K 27 = 2700K 30 = *3000K 35 = 3500K 40 = 4000K 50 = 5000K	24 = 24V DC

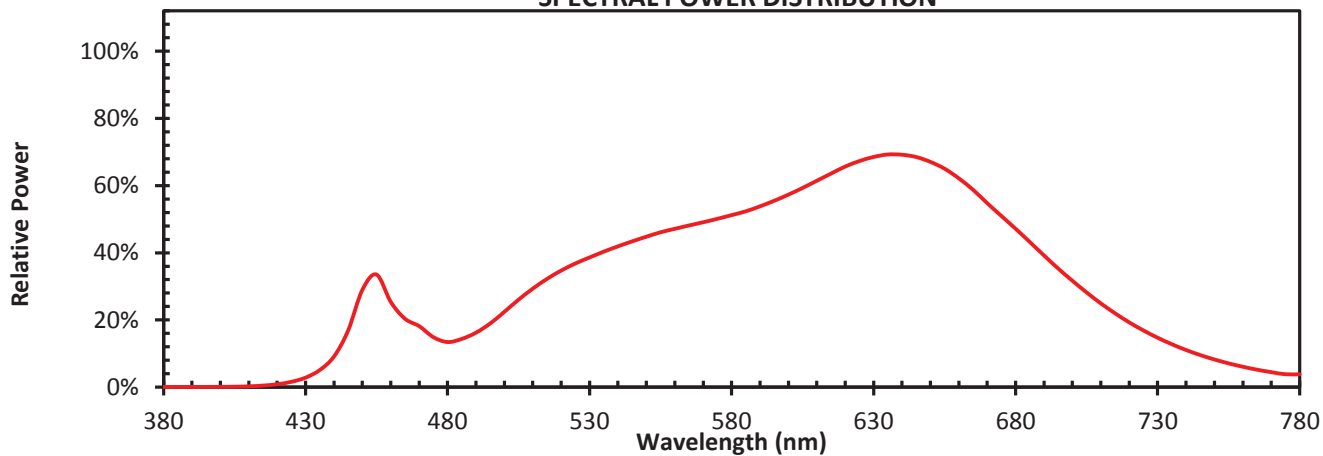
**End Preps (see page 19)**  
Please specify type at time of ordering.

**Lengths**  
Please specify lengths at time of ordering.

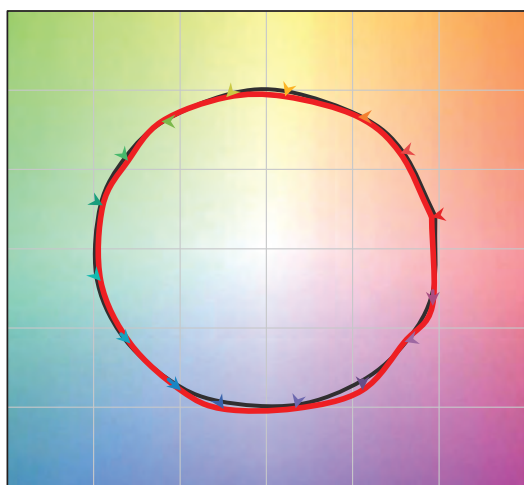
\*This product is in compliance with the California Energy Code Title 24 JA8-2016 in 3000K and only when incorporating a specific power supply.

HO IESNA TM-30-15

SPECTRAL POWER DISTRIBUTION



COLOR VECTOR GRAPHIC



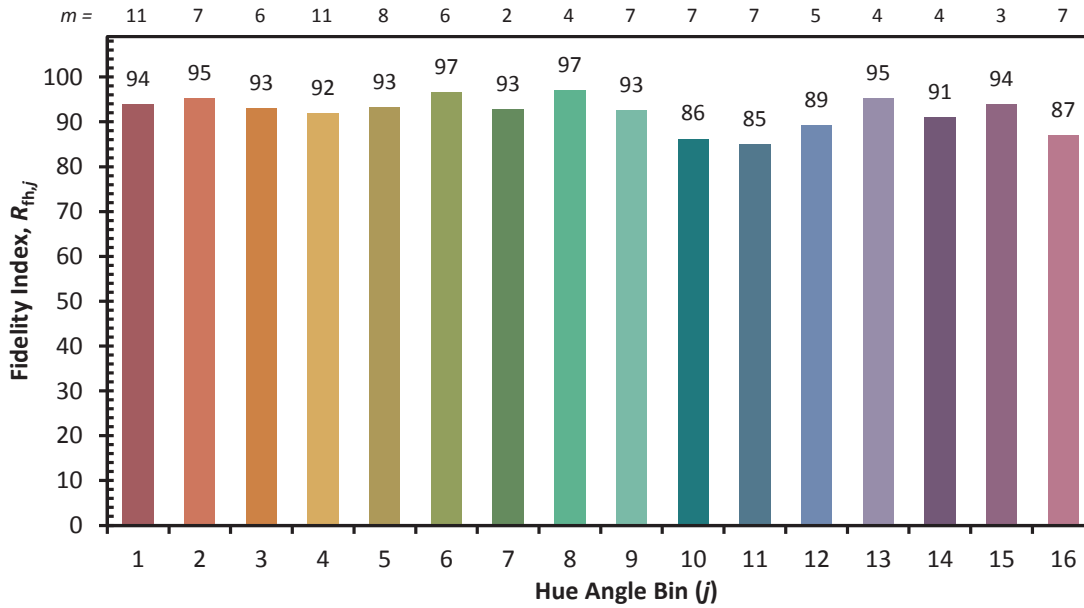
— Reference Illuminant    — Test Source

HUE BIN	FIDELITY INDEX	CHROMA % SHIFTS	HUE % SHIFTS
1	94	-2%	0%
2	95	-2%	0%
3	93	-1%	2%
4	92	-3%	0%
5	93	-2%	2%
6	97	-1%	1%
7	93	-3%	1%
8	97	-1%	0%
9	93	-2%	4%
10	86	-1%	8%
11	85	2%	10%
12	89	4%	4%
13	95	2%	-1%
14	91	5%	-4%
15	94	-1%	-1%
16	87	2%	-9%

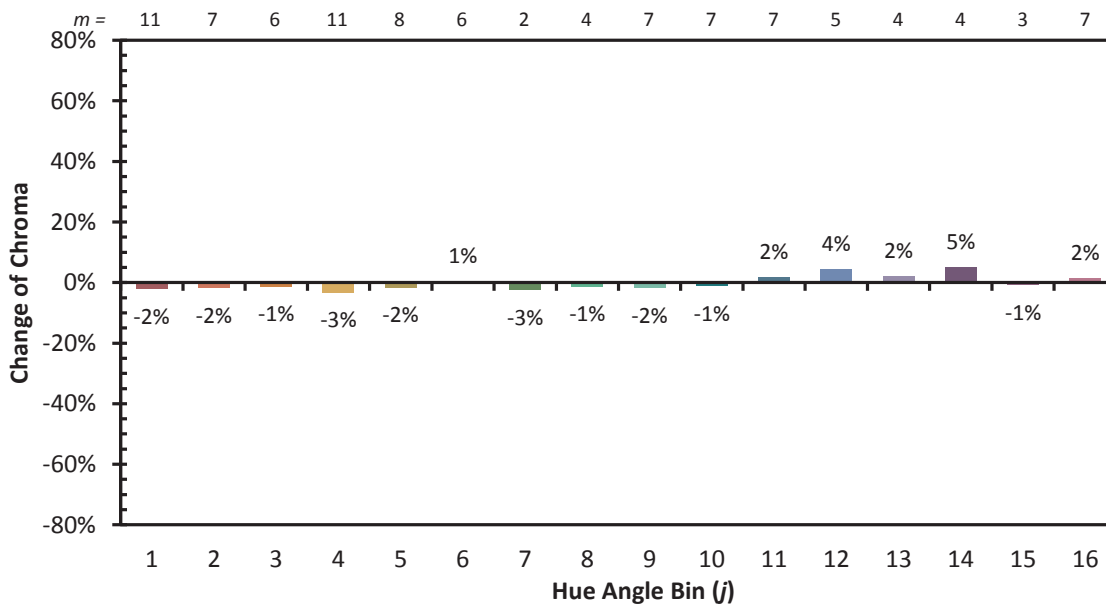


HO IESNA TM-30-15

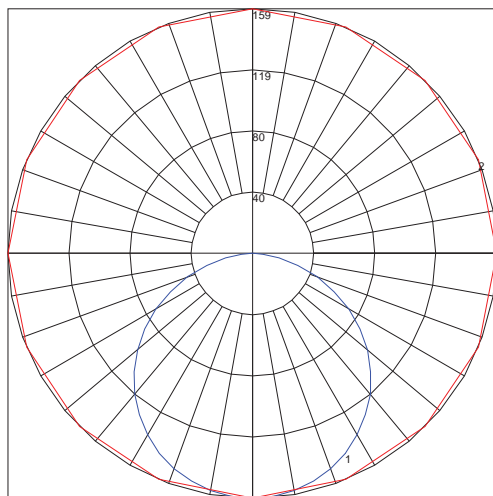
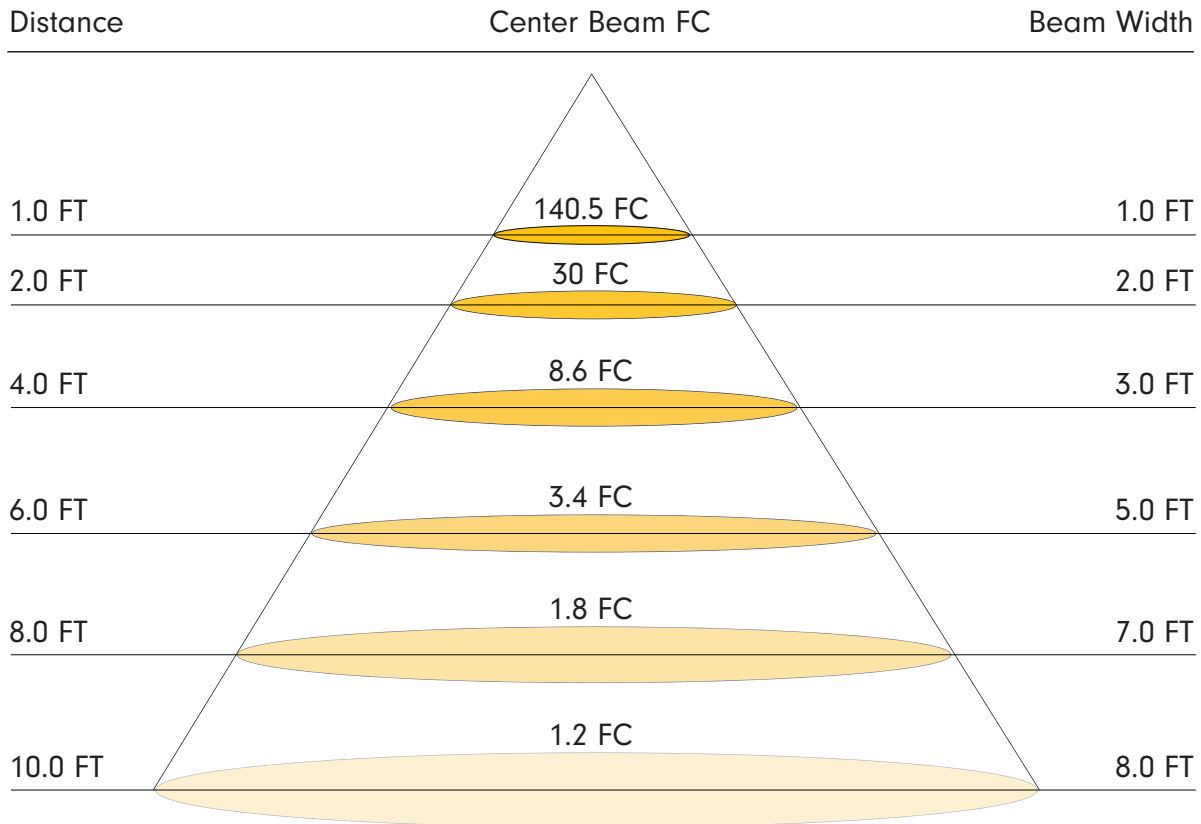
Hue Angle Bin vs. Fidelity Index



Hue Angle Bin vs. Change of Chroma



**HO Photometric Data (Based on 3000K / 1' strip)**



Maximum Candela = 159.26  
 Located At Horizontal Angle = 0  
 Vertical Angle = 0  
 #1 Vertical Plane Through Horizontal Angles (0-180) (Through Max. Cd.)  
 #2 Vertical Cone Through Vertical Angle (0) (Through Max. Cd.)



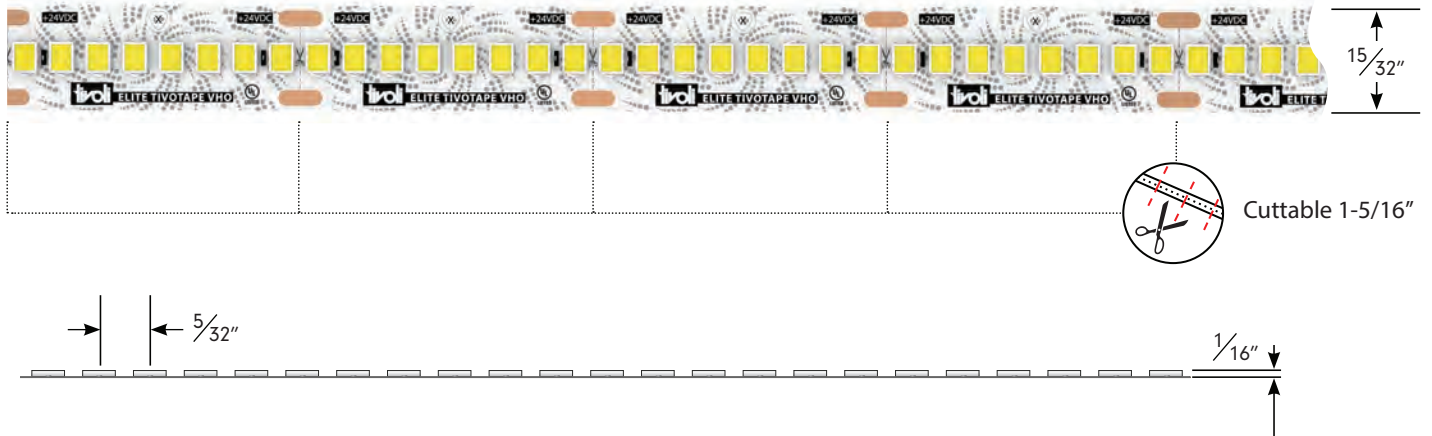
**HO Data**

Electrical & Photometric Data (Based on 95 CRI / 3000K)							
Input Voltage	24V DC						
Dimming Option	MLV/ELV/0-10V						
Power Supply	Class 2						
Wire Size (End Prep)	18 AWG, 2 wire						
Power Consumption	4.5 W/ft.						
Color Temperature (CCT)	2200K	2400K	2700K	3000K	3500K	4000K	5000K
Lumen Output	464	486	513	518	527	549	558
Efficacy	103	108	114	115	117	122	124
Color Rendering Index (CRI)	96	95	95	95	93	92	89
R9	83						
TM-30-15 Fidelity Index (R <sub>f</sub> )	92						
TM-30-15 Gamut Index (R <sub>g</sub> )	100						

Physical	
LED Package	2835
Cut Increments	1 5/16"
LEDs/ft	73
Operating Temperature	-40°F (-40°C) ~ +140°F (+60°C)
Environment	IP54 Damp Location, Conformal eXo Shield Coated
Maximum Run Length	20'
Copper Trace	4 Ounce
Adhesive	3M VHB Tape
Dimension	15/32" (12mm)

Performance	
Certification	UL Listed
Lumen Maintenance (L70) Hours	60,000
Binning Tolerance	1.5 Step MacAdam Elipse
Warranty	5 Years

## Very High Output (VHO)



7W/ft  
770LM/ft



4oz. Trace



High Efficacy



95 CRI



Compliant



VHB Adhesive



IP54



eXo Shield



2200K



2400K



2700K



3000K



3500K



4000K



5000K

## Ordering Information



PRODUCT CODE	INTENSITY	INSTALL	LED COLOR	VOLTAGE
TPLE	VHO	I		24

TPLE = TivoTape ELITE

VHO = Very High Output

I = Indoor

22 = 2200K

24 = 2400K

27 = 2700K

30 = \*3000K

35 = 3500K

40 = 4000K

50 = 5000K

24 = 24V DC

### End Preps (see page 19)

Please specify type at time of ordering.

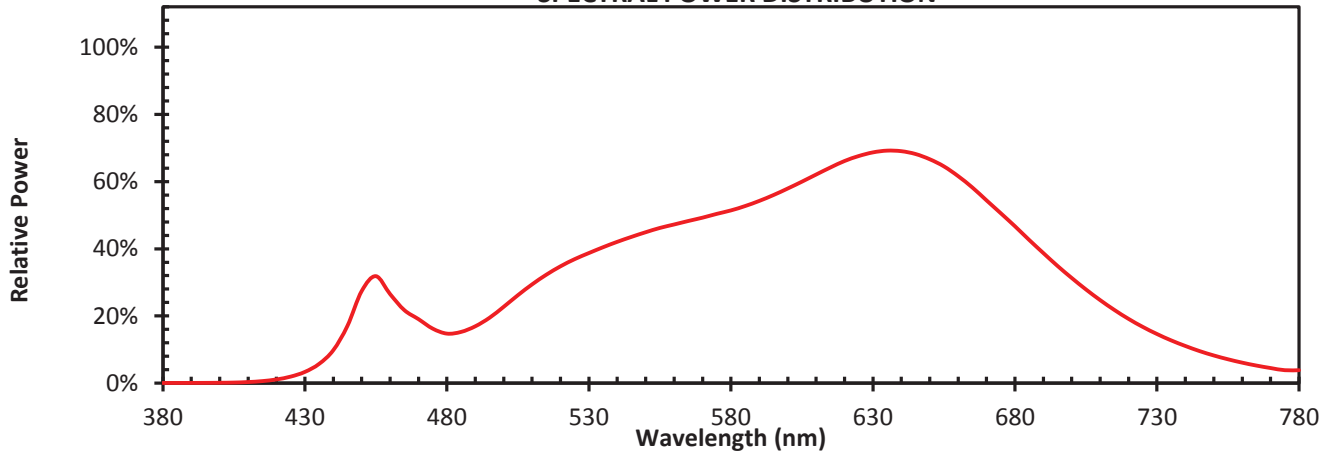
### Lengths

Please specify lengths at time of ordering.

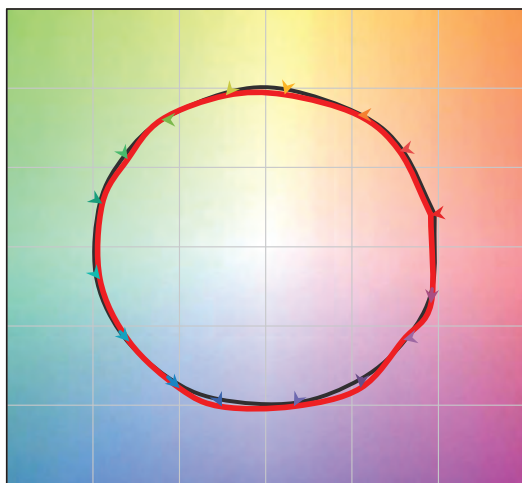
\*This product is in compliance with the California Energy Code Title 24 JA8-2016 in 3000K and only when incorporating a specific power supply.

VHO IESNA TM-30-15

SPECTRAL POWER DISTRIBUTION



COLOR VECTOR GRAPHIC



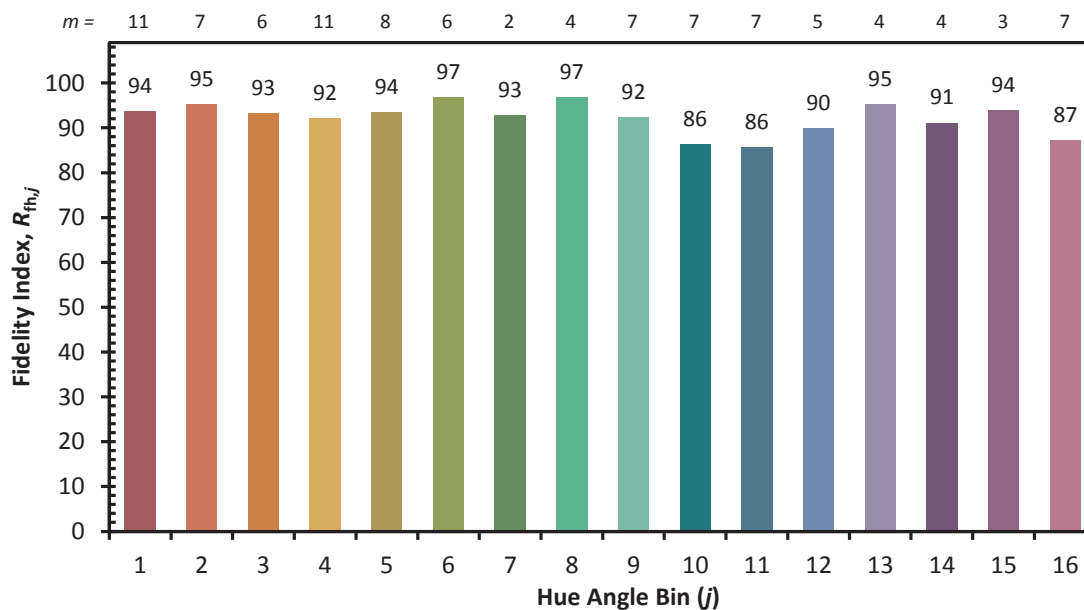
— Reference Illuminant    — Test Source

HUE BIN	FIDELITY INDEX	CHROMA % SHIFTS	HUE % SHIFTS
1	94	-2%	0%
2	95	-2%	1%
3	93	-1%	2%
4	92	-3%	0%
5	94	-2%	2%
6	97	0%	1%
7	93	-3%	1%
8	97	-2%	1%
9	92	-2%	4%
10	86	-1%	8%
11	86	2%	10%
12	90	4%	3%
13	95	2%	-1%
14	91	5%	-4%
15	94	-1%	-1%
16	87	1%	-9%

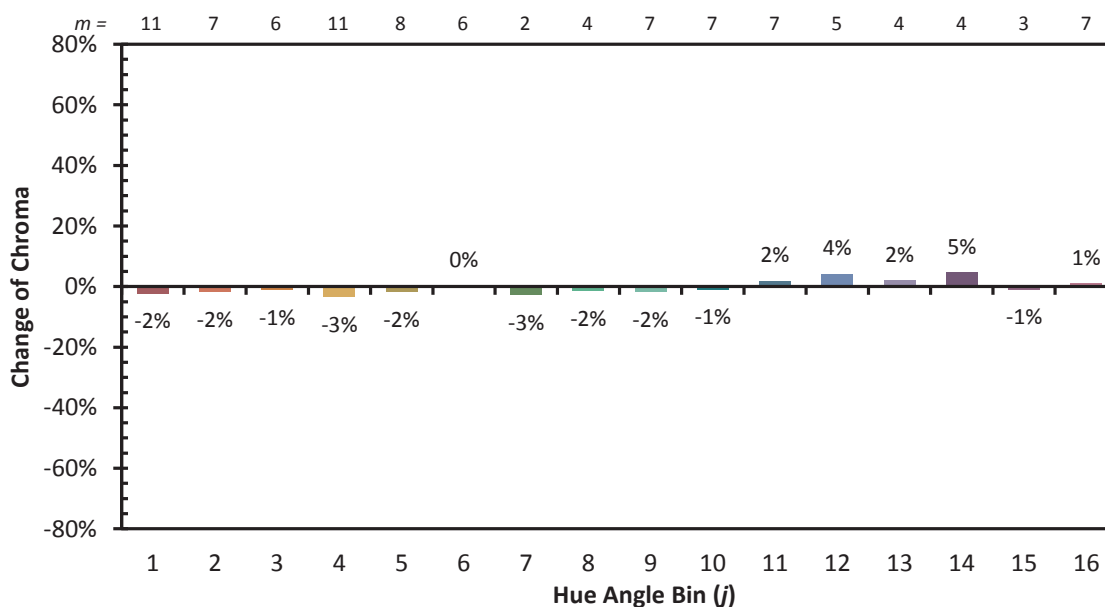


VHO IESNA TM-30-15

Hue Angle Bin vs. Fidelity Index

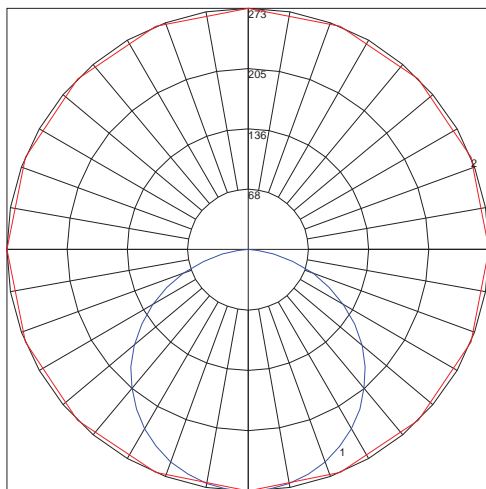
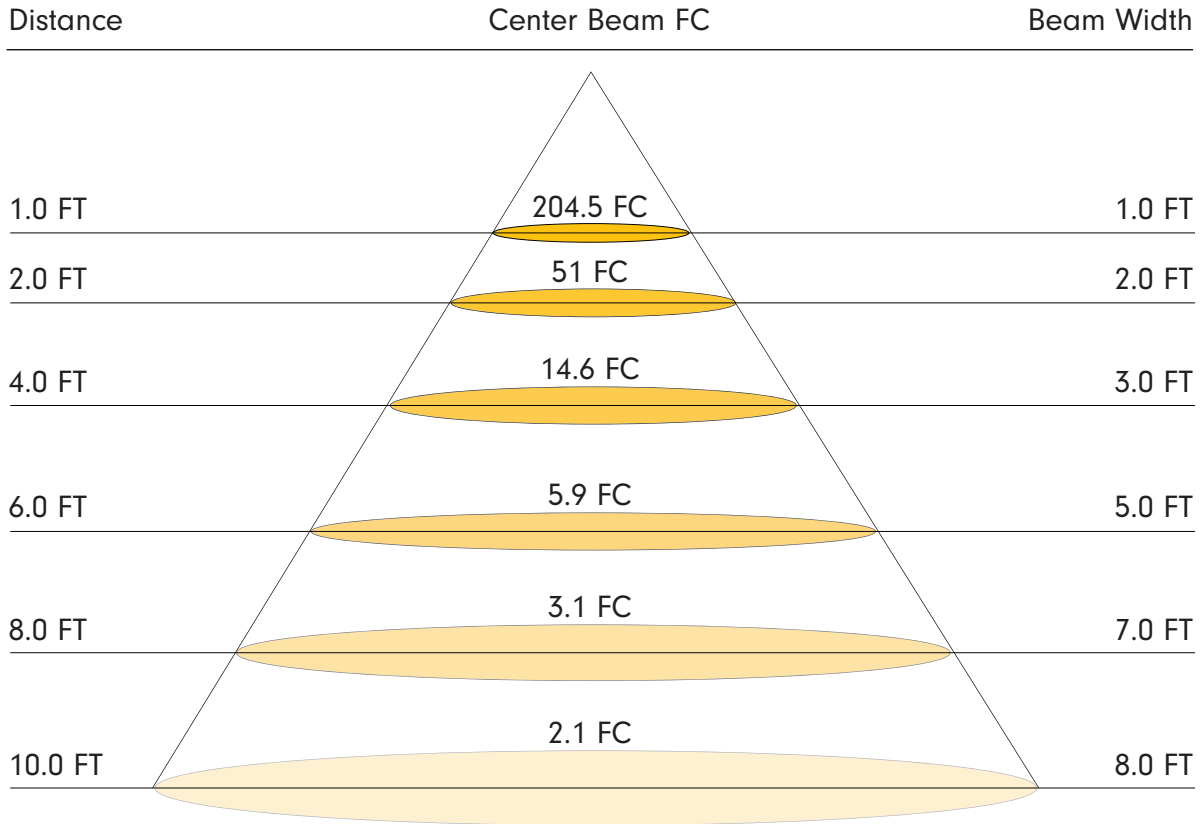


Hue Angle Bin vs. Change of Chroma





**VHO Photometric Data (Based on 3000K / 1' strip)**



Maximum Candela = 272.78  
 Located At Horizontal Angle = 0  
 Vertical Angle = 0  
 #1 Vertical Plane Through Horizontal Angles (0-180) (Through Max. Cd.)  
 #2 Vertical Cone Through Vertical Angle (0) (Through Max. Cd.)



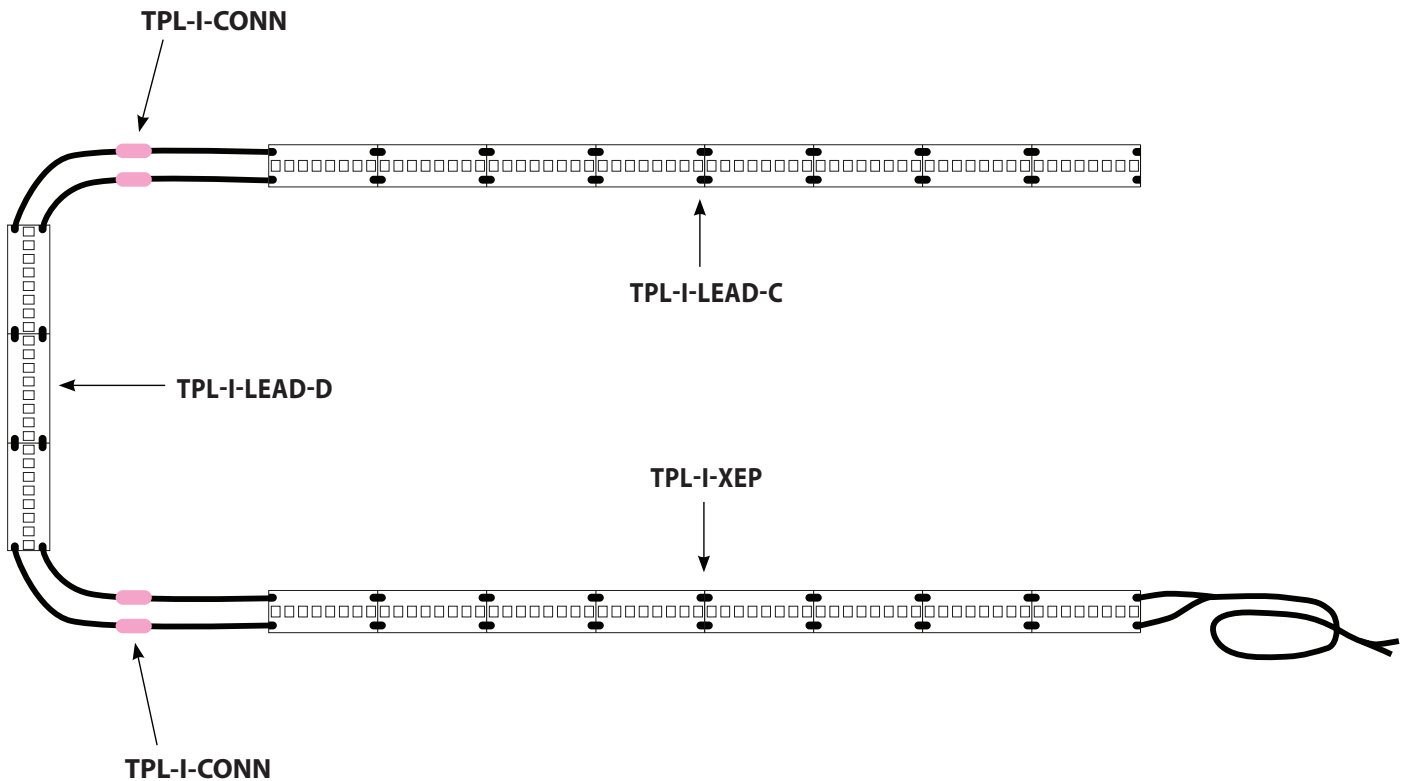
VHO Data

Electrical & Photometric Data (Based on 95 CRI / 3000K)							
Input Voltage	24V DC						
Dimming Option	MLV/ELV/0-10V						
Power Supply	Class 2						
Wire Size (End Prep)	18 AWG, 2 wire						
Power Consumption	7 W/ft.						
Color Temperature (CCT)	2200K	2400K	2700K	3000K	3500K	4000K	5000K
Lumen Output	686	728	763	770	784	819	826
Efficacy	98	104	109	110	112	117	118
Color Rendering Index (CRI)	96	95	95	95	93	92	89
R9	83						
TM-30-15 Fidelity Index ( $R_f$ )	92						
TM-30-15 Gamut Index ( $R_g$ )	99						

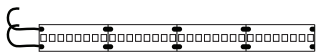
Physical	
LED Package	2835
Cut Increments	1 5/16"
LEDs/ft	73
Operating Temperature	-40°F (-40°C) ~ +140°F (+60°C)
Environment	IP54 Damp Location, Conformal eXo Shield Coated
Maximum Run Length	13'
Copper Trace	4 Ounce
Adhesive	3M VHB Tape
Dimension	15/32" (12mm)

Performance	
Certification	UL Listed
Lumen Maintenance (L70) Hours	60,000
Binning Tolerance	1.5 Step MacAdam Elipse
Warranty	5 Years

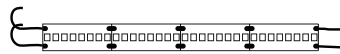
**Power Leads and Jumpers** (Installed by Tivoli's certified solderers)



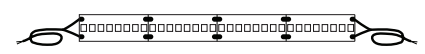
**Power Leads and Jumpers Must Be Specified For Each Run At Time Of Ordering.**



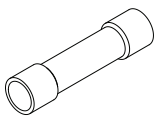
**TPL-I-LEAD-C**  
LEAD END  
24" standard 2 conductor 18AWG lead wire  
factory attached to one end of tape.



**TPL-I-LEAD-D**  
LEAD/LEAD  
24" standard 2 conductor 18AWG lead wire  
factory attached to both ends of tape.



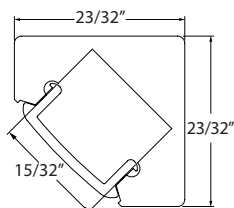
**TPL-I-XEP**  
EXTRA LEAD WIRE  
Additional factory attached 18AWG lead wire  
to extend lengths of LEAD-C and LEAD-D up to 20  
ft max. Sold per foot (not shipped as spooled  
wire).



**TPL-I-CONN**  
18-22AWG BUTT CONNECTORS  
Used to interconnect factory attached lead wires. Sold individually.  
(2 ea required per connection).

## Mounting Channel

### DYER



**DYER-CHAN-SLV-6.5**  
Anodized Aluminum Extrusion,  
available in 6.5' lengths



**DYER-LNS-OP-6.5**  
Lens, opal, length 6.5'



**DYER-EC-01**  
Solid End Cap

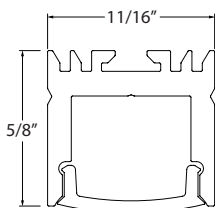


**DYER-EC-02**  
Powerfeed End Cap



**DYER-MTBK**  
Mounting Clip

### VALENCIA



**VALN-CHAN-SLV-6.5**  
Anodized Aluminum Extrusion,  
available in 6.5' lengths



**VALN-LNS-OP-6.5**  
Lens, opal, length 6.5'



**VALN-EC-01**  
Solid End Cap

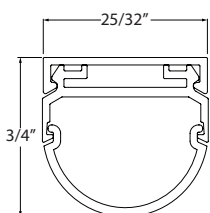


**VALN-EC-02**  
Powerfeed End Cap



**VALN-MTBK**  
Mounting Clip

### HORIZON



**HRIZ-CHAN-SLV-6.5**  
Anodized Aluminum Extrusion,  
available in 6.5' lengths



**HRIZ-LNS-OP-6.5**  
Lens, opal, length 6.5'

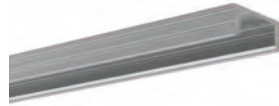
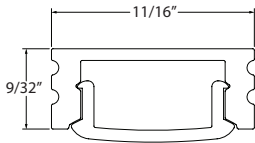
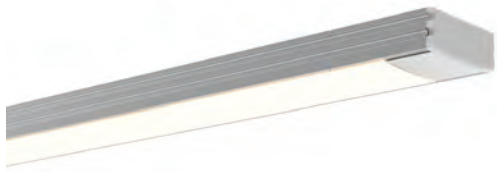


**HRIZ-EC-01**  
Solid End Cap



**HRIZ-EC-02**  
Powerfeed End Cap

**MINI**



**MINI-CHAN-SLV-6.5**  
Anodized Aluminum Extrusion,  
available in 6.5' lengths



**MINI-LNS-OP-6.5**  
Lens, opal, length 6.5'



**MINI-EC-01**  
Solid End Cap



**MINI-EC-02**  
Powerfeed End Cap

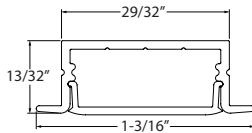


**MINI-MTBK**  
Mounting Clip



**MINI-ADJ-MTBK**  
Adjustable Mounting  
Clip

**WARNER**



**WRNR-CHAN-SLV-6.5**  
Anodized Aluminum Extrusion,  
available in 6.5' lengths



**WRNR-LNS-OP-6.5**  
Lens, opal, length 6.5'

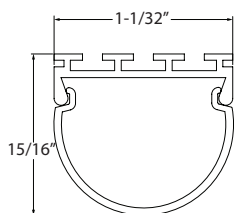


**WRNR-EC-01**  
Solid End Cap



**WRNR-EC-02**  
Powerfeed End Cap

**DOME**



**DOME-CHAN-SLV-6.5**  
Anodized Aluminum Extrusion,  
available in 6.5' lengths



**DOME-LNS-OP-6.5**  
Lens, opal, length 6.5'

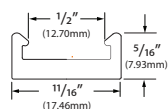


**DOME-EC-01**  
Solid End Cap



**DOME-EC-02**  
Powerfeed End Cap

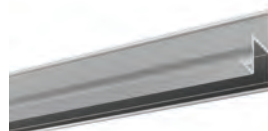
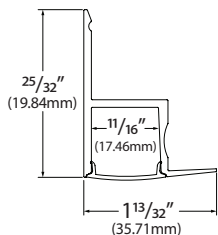
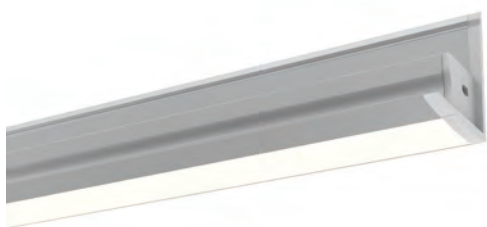
## M CHAN



**MCHAN-8-LP**  
Low profile mounting channel,  
clear polycarbonate, length 8'.

**NOTE:** No Lens option

## EDGE



**EDGE-CHAN-SLV-6.5**  
Anodized Aluminum Extrusion,  
available in 6.5' lengths



**EDGE-LNS-OP-6.5**  
Lens, opal, length 6.5'



**EDGE-EC-01**  
Solid End Cap



**EDGE-EC-02**  
Powerfeed End Cap

## WALLY



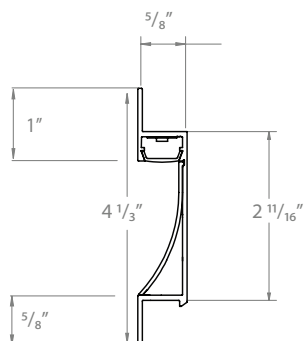
**WALLY-SL-SL-8**  
Anodized Aluminum Extrusion, reflector, and frosted acrylic lens.  
available in 8' lengths



**WALLY-EC-SLV**  
End Cap



**WALLY-MTBK**  
Mounting Clip

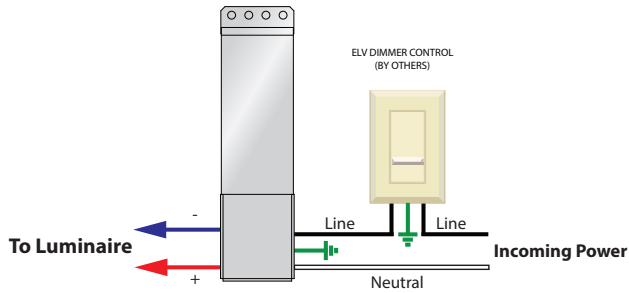


**WALLY-IC-SL**  
Inside Corner  
24" x 24" Anodized  
Aluminum Extrusion,  
reflector, and frosted  
acrylic lens.



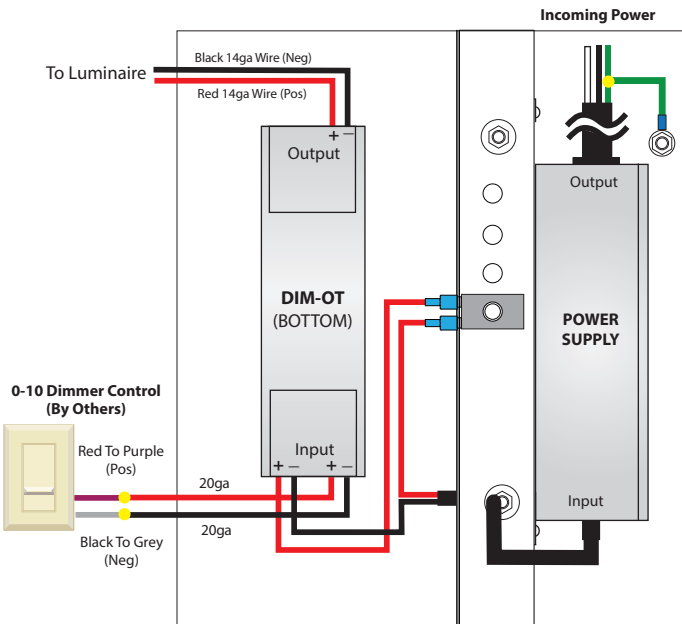
**WALLY-OC-SL**  
Outside Corner  
24" x 24" Anodized  
Aluminum Extrusion,  
reflector, and frosted  
acrylic lens.

## Power Supplies



### ELV DIMMING

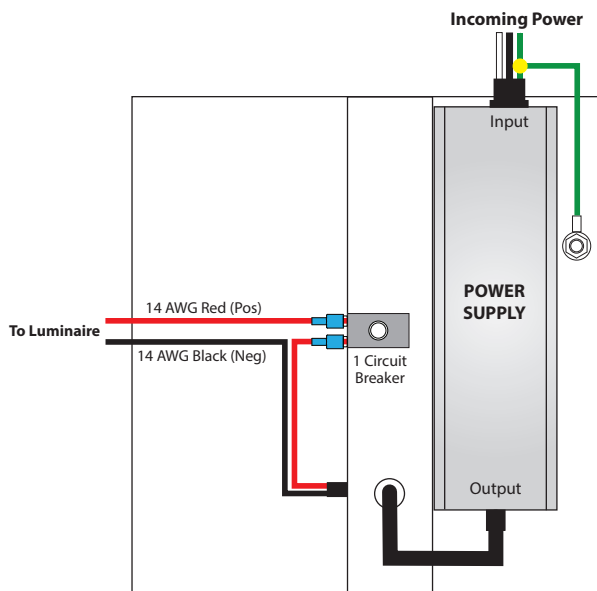
CAT NO	PRIMARY AND SECONDARY	TOTAL WATTAGE / AMPS PER BREAKER	DIMENSIONS	LISTING
ER-80-1-3.3-24-D	90-130V AC 24V DC	80W / 3.3A	4.88"Wx14.4"Lx1.69"D	cULus
EMEC961424	120V AC 24V DC	96W / 4A	3.03"W X 14.3"L X 2.24"D	cETLus
EMML961424	120V AC 24V DC	96W / 4A	3.93"W X 8.13"L X 1.59"D	cETLus
EMMLH961424	277V AC 24V DC	96W / 4A	3.93"W X 8.13"L X 1.59"D	cETLus



### 0-10V DIMMING

CAT NO	PRIMARY AND SECONDARY	TOTAL WATTAGE / AMPS PER BREAKER	DIMENSIONS	LISTING
ADNM-90-1-24-DOT	120-277V AC 24V DC	60W / 1X5A	6"W X 8"L X 4"D	cULus
ADUL-120-1-4-24-DOT		96W / 1X4A	12"W X 12"L X 4.25"D	UL
ADUL-240-2-4-24-DOT		192W / 2X4A	12"W X 12"L X 4.25"D	UL
ADUL-320-3-4-24-DOT		288W / 3X4A	12"W X 12"L X 4.25"D	UL

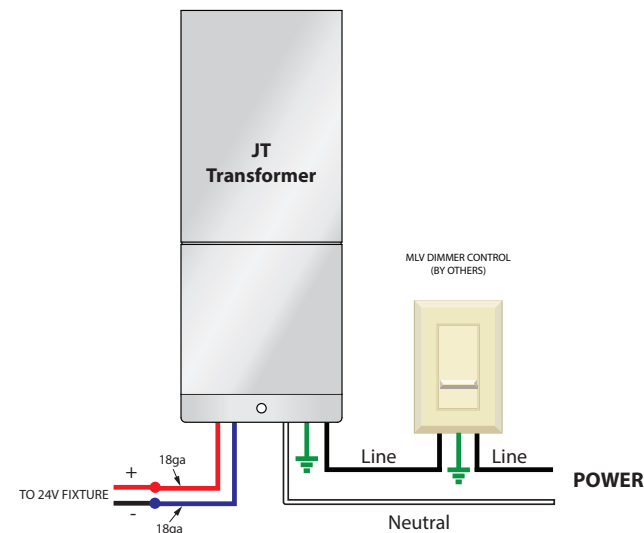
## Power Supplies



### NON DIMMING

CAT NO	PRIMARY AND SECONDARY	TOTAL WATTAGE / AMPS PER BREAKER	DIMENSIONS	LISTING
ADUL-120-1-4-24-D	120-277V AC 24V DC	96W / 1X4A	12"W X 12"L X 4.25"D	UL
ADUL-240-2-4-24-D	120-277V AC 24V DC	192W / 2X4A	12"W X 12"L X 4.25"D	UL
ADUL-320-3-4-24-D	120-277V AC 24V DC	288W / 3X4A	12"W X 12"L X 4.25"D	UL

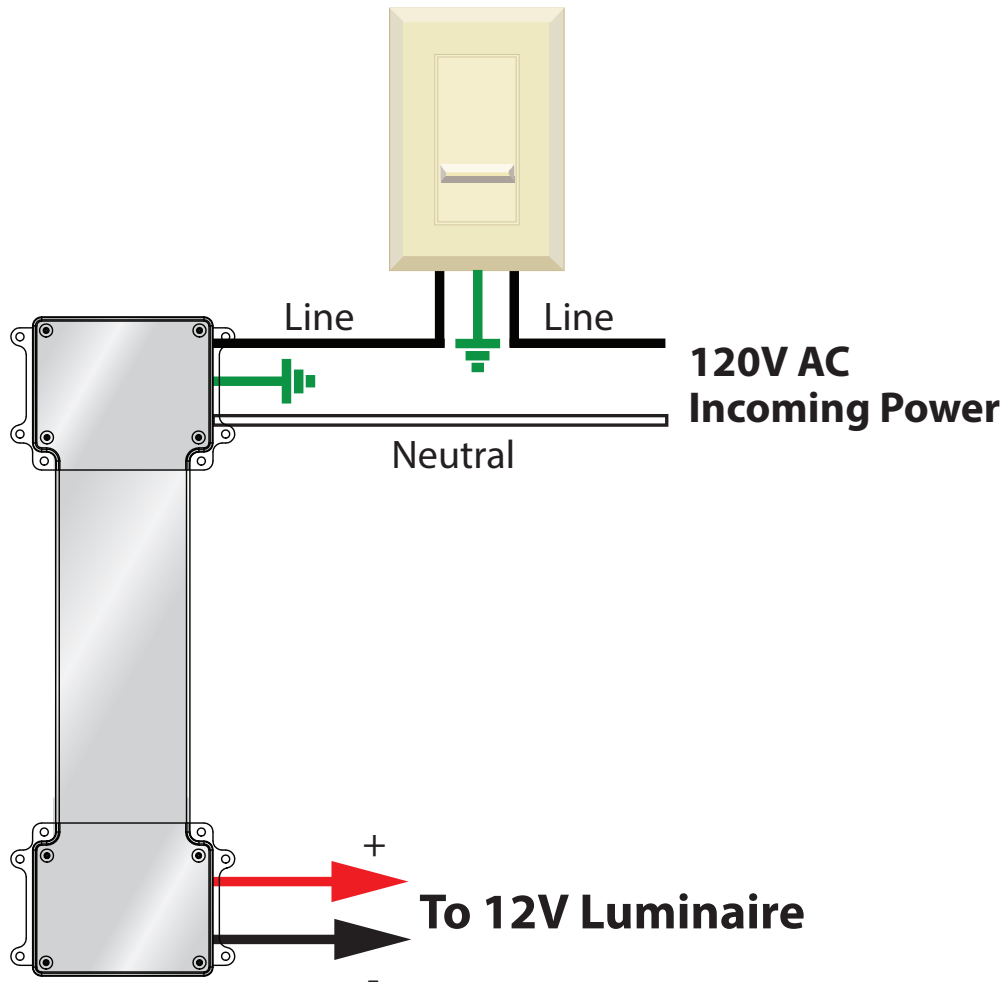
### MLV DIMMING



CAT NO	PRIMARY AND SECONDARY	TOTAL WATTAGE / AMPS PER BREAKER	DIMENSIONS	LISTING
JT-100-1-4-24-D	120V AC 24V DC	96W / 1X4A	4.25"W X 8.5"L X 3.25"D	UL
JTH-100-1-4-24-D	277V AC 24V DC	96W / 1X4A	4.25"W X 8.5"L X 3.25"D	UL
JT-300-3-4-24-D	120V AC 24V DC	288W / 3X4A	8.5"W X 16"L X 4.5"D	UL
JTH-300-3-4-24-D	277V AC 24V DC	288W / 3X4A	8.5"W X 16"L X 4.5"D	UL
EMEC961424	120V AC 24V DC	96W / 4A	3.03"W X 14.3"L X 2.24"D	cETLus
EMML961424	120V AC 24V DC	96W / 4A	3.93"W X 8.13"L X 1.59"D	cETLus
EMMLH961424	277V AC 24V DC	96W / 4A	3.93"W X 8.13"L X 1.59"D	cETLus



Compliant Power Supplies



**ELV DIMMING**

Maximum Run Length Based On JA8 Compliant Power Supply

CAT NO	PRIMARY AND SECONDARY	TOTAL WATTAGE / AMPS PER BREAKER	DIMENSIONS	LISTING	ELITE TivoTape	
						Max Run Length
ER-80-1-3.3-24-D	120-277V AC 24V DC	80W / 1X3.3A	5"W X 15"L X.75"D	cULus	Standard Brightness (SB)	22'
					High Output (HO)	20'
					Very High Output (VHO)	11'