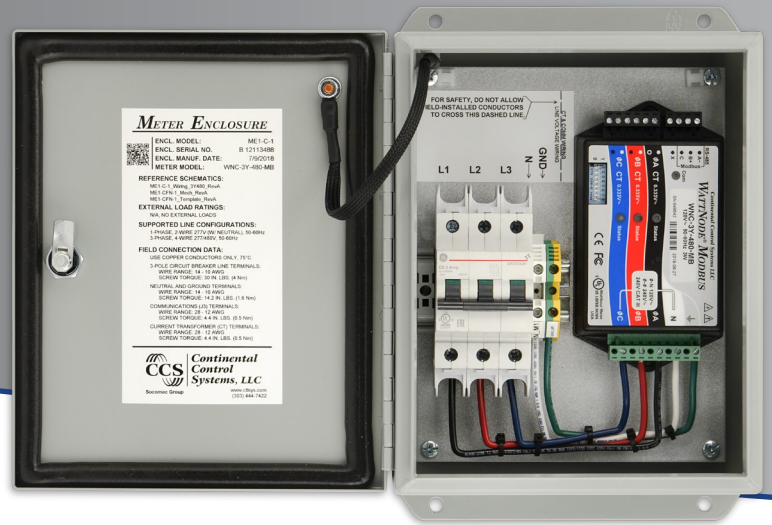


WATTNODE[®] METER ENCLOSURES

ME1-C-1, ME1-F-1, ME1-N-1



UL 508A NEMA 4 Enclosure

The WattNode[®] Meter Enclosure is a UL 508A NEMA 4 enclosure for the WattNode meter. It is available with a three-phase circuit breaker, a fuse block, or no circuit protection. The WattNode Meter comes preinstalled when ordered with the enclosure.

Features

- UL 508A Listed
- NEMA 3R, 4, 12, and 13 rated enclosure
- Waterproof when used with NEMA 4 conduit hubs
- 10 x 8 x 4 inch powder-coated steel enclosure
- External mounting tabs
- Available with circuit breaker, fuses, or no overcurrent protection

Models

Model	Overcurrent Protection	Disconnect	Service Voltages
ME1-C-1	Three-phase circuit breaker	Yes	120/480 Vac
ME1-F-1	Three-phase fuses	No	347/600 Vac
ME1-N-1	None	No	120/600 Vac

The ME1-F-1 and ME1-N-1 do not contain an internal disconnect switch so some external disconnect switch or circuit breaker is required to disconnect power. The fuse holder is not rated to be operated under load and may not be used as a means of disconnect.

Ordering

Normally the WattNode Meter Enclosure is ordered with a WattNode meter and the meter will be installed at the factory. If you need to purchase an enclosure without the meter and install the meter later, contact CCS to specify the meter model so that CCS can build the enclosure with the correct labeling and wiring diagram.

Specifications

Electrical

- **Line Frequency:** 50/60 Hz
- **Nominal Vac:** see the specifications for the installed WattNode meter
- **Maximum Full-Load Amps:** 50 mA
- **Short Circuit Current Rating:** 10 kA

Field Wiring Connections

- **Line Voltage (L1, L2, and L3):** 12 AWG wire recommended, copper only, 75°C rated
 - **Circuit breaker (ME1-C-1):** 14 to 10 AWG, 4 N·m (30 lbs·in)
 - **Fuse holder (ME1-F-1):** 14 to 10 AWG, 2 N·m (17.7 lbs·in)
 - **Screw terminals (ME1-N-1):** 14 to 10 AWG, 1.6 N·m (14.2 lbs·in)
- **Neutral:** Gray screw terminal, 14 to 10 AWG, 1.6 N·m (14.2 lbs·in)
- **Ground:** Green/yellow screw terminal, 14 to 10 AWG, 1.6 N·m (14.2 lbs·in)
- **Current Transformers:** Black-six position screw terminal, 28 to 12 AWG, 0.5 N·m (4.4 lbs·in)
- **Communication / Pulse Output:** Black-four position screw terminal, 28 to 12 AWG, 0.5 N·m (4.4 lbs·in)

Regulatory

- UL 508A Listed industrial control panel (U.S. and Canada), file number E495898

Components

Note: the specific components are subject to change without notice.

- **Enclosure:** Hammond Mfg EJ1084, UL 508A Type 3R, 4, 12, and 13; CSA Type 3R, 4, 12, and 13
- **Circuit Breaker:** GE EP103ULH4C0.5 ElfaPlus, UL 489, 480 Vac, 0.5 A, 10 kA interrupting rating
- **Circuit Breaker Padlock Bracket:** GE 283-190, a padlock bracket is provided for lockout use
- **Fuse Holder:** Littelfuse LPSC0003Z, UL 4248-1 Class CC, 3 poles, 600 Vac, 30 A, 200 kA interrupting rating
- **Fuses:** Bussmann FNQ-R-1/2, Class CC, UL 248-4, 600 Vac, 0.5 A, 200 kA interrupting rating
- **Screw Terminals:** Allen-Bradley 1492-J6, UL 486A-486B, 600 Vac, 30 A
- **General Wiring:** 12 AWG, stranded, 600 V, 90°C, UL style 1015

Environmental

- **Indoor Use:** Suitable for indoor use.
- **Outdoor Use:** Suitable for outdoor use.
WARNING: Direct sunlight exposure may cause overheating

Enclosure

- **Type:** Hammond Eclipse Junior
- **Optional Enclosure Accessories:** padlock adapter
- **NEMA Rating:** 3R, 4, 12, and 13
- **IP Rating:** IP66
 - **Width:** 8.0 inches
 - **Height (without mounting tabs):** 10.0 inches
 - **Height (with mounting tabs):** 11.5 inches
 - **Elevation:** 4.66 inches
- **Mounting Plate:** 6.88 by 8.75 inches, 14-gauge galvanized steel

Conduit Openings

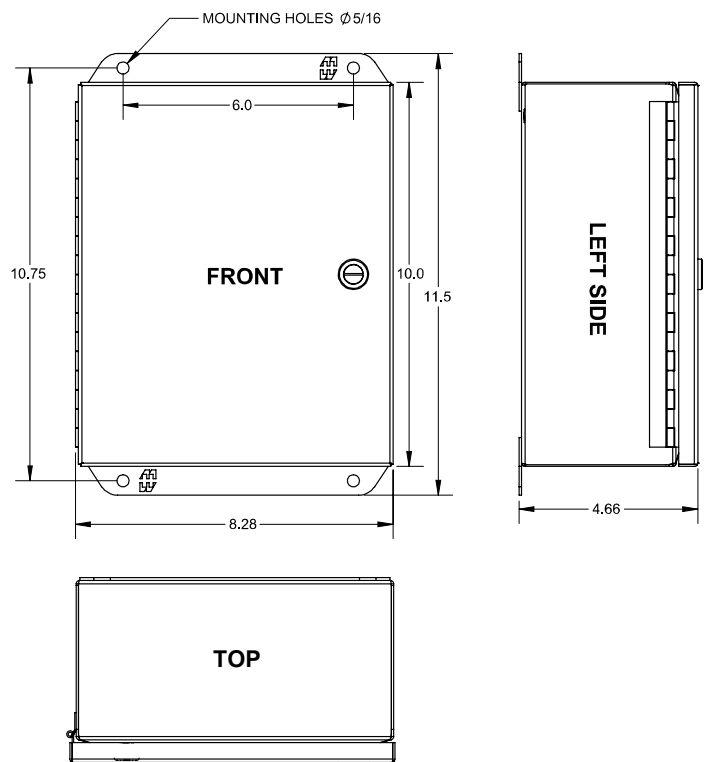
There are no conduit openings in the meter enclosure as shipped, but instructions and templates for adding openings are provided.

Weight

The following are approximate weights of the completed enclosure with the meter installed.

- **ME1-C-1:** 9.4 pounds (4.3 kg)
- **ME1-F-1:** 8.9 pounds (4.0 kg)
- **ME1-N-1:** 8.6 pounds (3.9 kg)

Mechanical



WattNode is a registered trademark of Continental Control Systems, LLC.