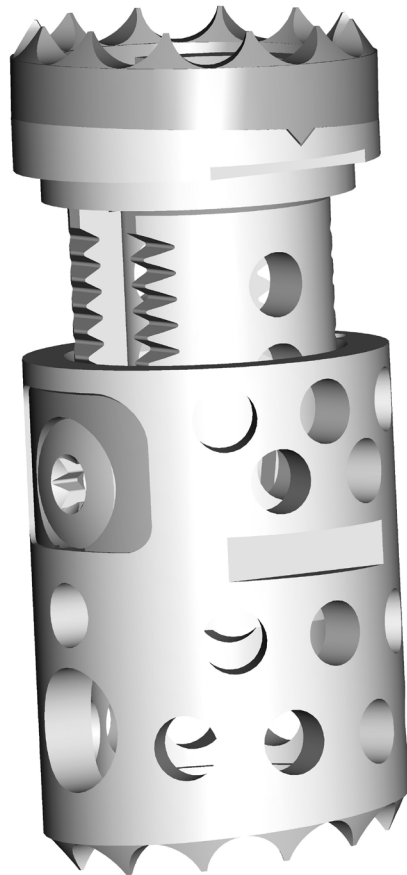


GIZA™

IMPLANTS CATALOG



EDEN
SPINE

The logo for Eden Spine, featuring a stylized yellow arch above the text "EDEN" and "SPINE" in a bold, sans-serif font. The background of the bottom half of the page is a dark blue world map.

PART NUMBER	DESCRIPTION	PICTURE
-------------	-------------	---------

GC101000S	Corpectomy implant D14 T1 2° - 5°
-----------	-----------------------------------

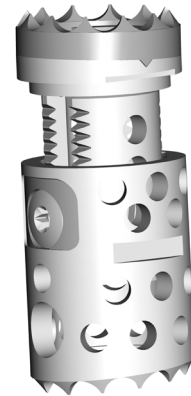
GC101003S	Corpectomy implant D14 T1 5° - 8°
-----------	-----------------------------------

GC201000S	Corpectomy implant D14 T2 2° - 5°
-----------	-----------------------------------

GC201005S	Corpectomy implant D14 T2 7° - 10°
-----------	------------------------------------

GC301000S	Corpectomy implant D14 T3 2° - 5°
-----------	-----------------------------------

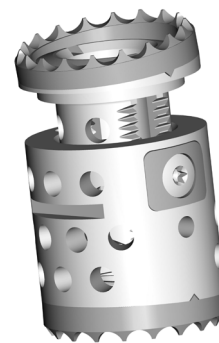
GC301005S	Corpectomy implant D14 T3 7° - 10°
-----------	------------------------------------



GT102000S	Corpectomy implant D21 T1 4° - 8° - 12°
-----------	---

GT202000S	Corpectomy implant D21 T2 4° - 8° - 12°
-----------	---

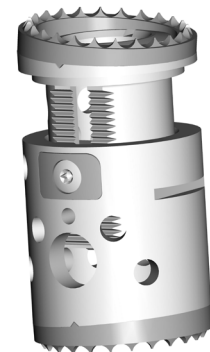
GT302000S	Corpectomy implant D21 T3 4° - 8° - 12°
-----------	---



GL103000S	Corpectomy implant D27 T1 4° - 8° - 12°
-----------	---

GL203000S	Corpectomy implant D27 T2 4° - 8° - 12°
-----------	---

GL303000S	Corpectomy implant D27 T3 4° - 8° - 12°
-----------	---



PART NUMBER	DESCRIPTION	PICTURE
-------------	-------------	---------

GTP21L30S	Long endplate D21 Lg 30 + holding screw
-----------	---

GTP21L35S	Long endplate D21 Lg 35 + holding screw
-----------	---

GTP21L40S	Long endplate D21 Lg 40 + holding screw
-----------	---

GTP21L45S	Long endplate D21 Lg 45 + holding screw
-----------	---

GTP21L50S	Long endplate D21 Lg 50 + holding screw
-----------	---



GLP27L35S	Long endplate D27 Lg 35 + holding screw
-----------	---

GLP27L40S	Long endplate D27 Lg 40 + holding screw
-----------	---

GLP27L45S	Long endplate D27 Lg 45 + holding screw
-----------	---

GLP27L50S	Long endplate D27 Lg 50 + holding screw
-----------	---





Eden Spine Europe SA

41, rue du 31 decembre
1207 Geneva Switzerland
Tél.: +41 22 310 29 11
Fax: +41 22 310 29 13

Eden Spine LLC

377 Maitland Ave - Suite 2010
Altamonte Springs, FL 32701, USA
Phone: +1 407 339 4729
Fax: +1 407 264 8303

www.edenspine.com |

info@edenspine.com |

