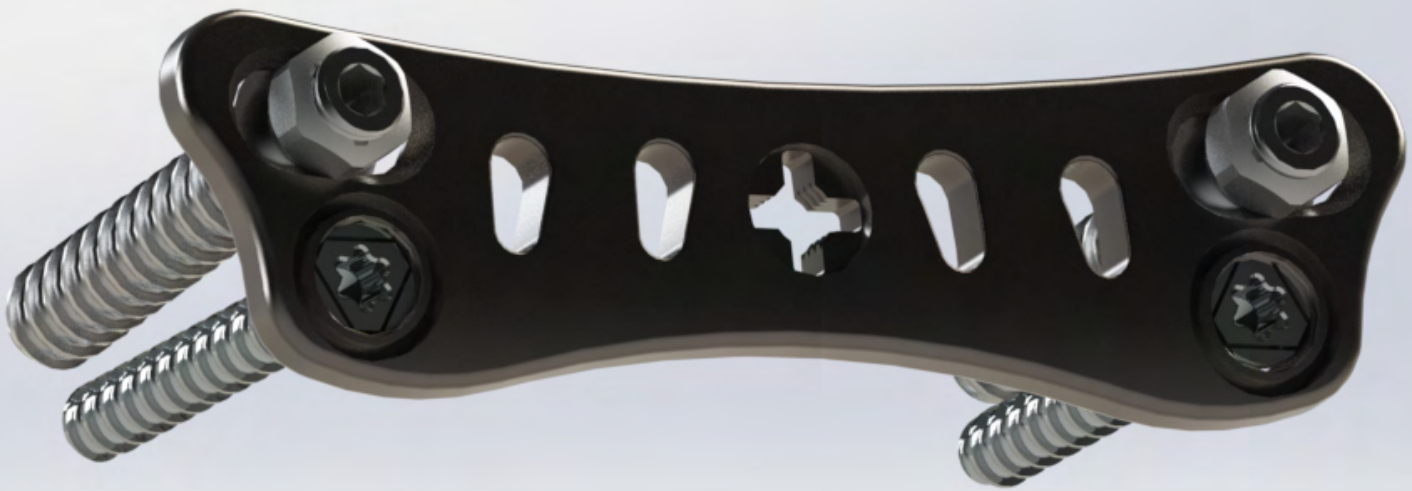




SPHYNX™




IMPLANTS CATALOG



EDEN
SPINE

The logo for Eden Spine, featuring a stylized yellow and blue wave-like graphic above the company name. The word "EDEN" is in a large, bold, sans-serif font, and "SPINE" is in a smaller, all-caps, sans-serif font below it.

PART NUMBER	DESCRIPTION	PICTURE	
SPPALM45S	Antero-lateral plate Sphynx - Thoraco-lumbar – Lg 45 mm		
SPPALM55S	Antero-lateral plate Sphynx - Thoraco-lumbar – Lg 55 mm		
SPPALM65S	Antero-lateral plate Sphynx - Thoraco-lumbar – Lg 65 mm		
SPPALM75S	Antero-lateral plate Sphynx - Thoraco-lumbar – Lg 75 mm		
SPPALM85S	Antero-lateral plate Sphynx - Thoraco-lumbar – Lg 85 mm		
SPPALM95S	Antero-lateral plate Sphynx - Thoraco-lumbar – Lg 95 mm		
SPPALM105S	Antero-lateral plate Sphynx - Thoraco-lumbar – Lg 105 mm		
SPPALM115S	Antero-lateral plate Sphynx - Thoraco-lumbar – Lg 115 mm		
SPPALM125S	Antero-lateral plate Sphynx - Thoraco-lumbar – Lg 125 mm		
SPPALM135S	Antero-lateral plate Sphynx - Thoraco-lumbar – Lg 135 mm		
SPVD6-25S	Hemispherical posterior screw Sphynx - D6 Lg 25 mm		
SPVD6-30S	Hemispherical posterior screw Sphynx - D6 Lg 30 mm		
SPVD6-35S	Hemispherical posterior screw Sphynx - D6 Lg 35 mm		
SPVD6-40S	Hemispherical posterior screw Sphynx - D6 Lg 40 mm		
SPVD6-45S	Hemispherical posterior screw Sphynx - D6 Lg 45 mm		
SPVD6-50S	Hemispherical posterior screw Sphynx - D6 Lg 50 mm		
SPVD6-55S	Hemispherical posterior screw Sphynx - D6 Lg 55 mm		
SPVD6-60S	Hemispherical posterior screw Sphynx - D6 Lg 60 mm		

PART NUMBER	DESCRIPTION	PICTURE
SPVD7-25S	Hemispherical posterior screw Sphynx - D7 Lg 25 mm	
SPVD7-30S	Hemispherical posterior screw Sphynx - D7 Lg 30 mm	
SPVD7-35S	Hemispherical posterior screw Sphynx - D7 Lg 35 mm	
SPVD7-40S	Hemispherical posterior screw Sphynx - D7 Lg 40 mm	
SPVD7-45S	Hemispherical posterior screw Sphynx - D7 Lg 45 mm	
SPVD7-50S	Hemispherical posterior screw Sphynx - D7 Lg 50 mm	
SPVD7-55S	Hemispherical posterior screw Sphynx - D7 Lg 55 mm	
SPVD7-60S	Hemispherical posterior screw Sphynx - D7 Lg 60 mm	
SPLN	Locking nut for hemispherical screw Sphynx	
SPVS5-25S	Anterior locking screw Sphynx - D5 Lg 25 mm	
SPVS5-30S	Anterior locking screw Sphynx - D5 Lg 30 mm	
SPVS5-35S	Anterior locking screw Sphynx - D5 Lg 35 mm	
SPVS5-40S	Anterior locking screw Sphynx - D5 Lg 40 mm	
SPVS5-45S	Anterior locking screw Sphynx - D5 Lg 45 mm	
SPVS5-50S	Anterior locking screw Sphynx - D5 Lg 50 mm	
SPVS5-55S	Anterior locking screw Sphynx - D5 Lg 55 mm	



Eden Spine Europe SA

41, rue du 31 decembre
1207 Geneva Switzerland
Tél.: +41 22 310 29 11
Fax: +41 22 310 29 13

Eden Spine LLC

377 Maitland Ave - Suite 2010
Altamonte Springs, FL 32701, USA
Phone: +1 407 339 4729
Fax: +1 407 264 8303

www.edenspine.com | info@edenspine.com |   