

Stronger Today for a Better Future

Reliability. Stability. Ease of use. TEKLYNX CENTRAL 5.0 delivers just that. Building on our longstanding dependability and incorporating feedback from our valued customers, TEKLYNX CENTRAL 5.0 enables your company to reap the benefits of a modernized enterprise label management solution.

TEKLYNX CENTRAL 5.0 is built on a stronger foundation, paving the way for future innovation in barcode labeling to help you work better.

Centralization is the future. Digitally transform your labeling environment with TEKLYNX CENTRAL 5.0. [Request a demonstration today!](#)

What's new in TEKLYNX CENTRAL 5.0?

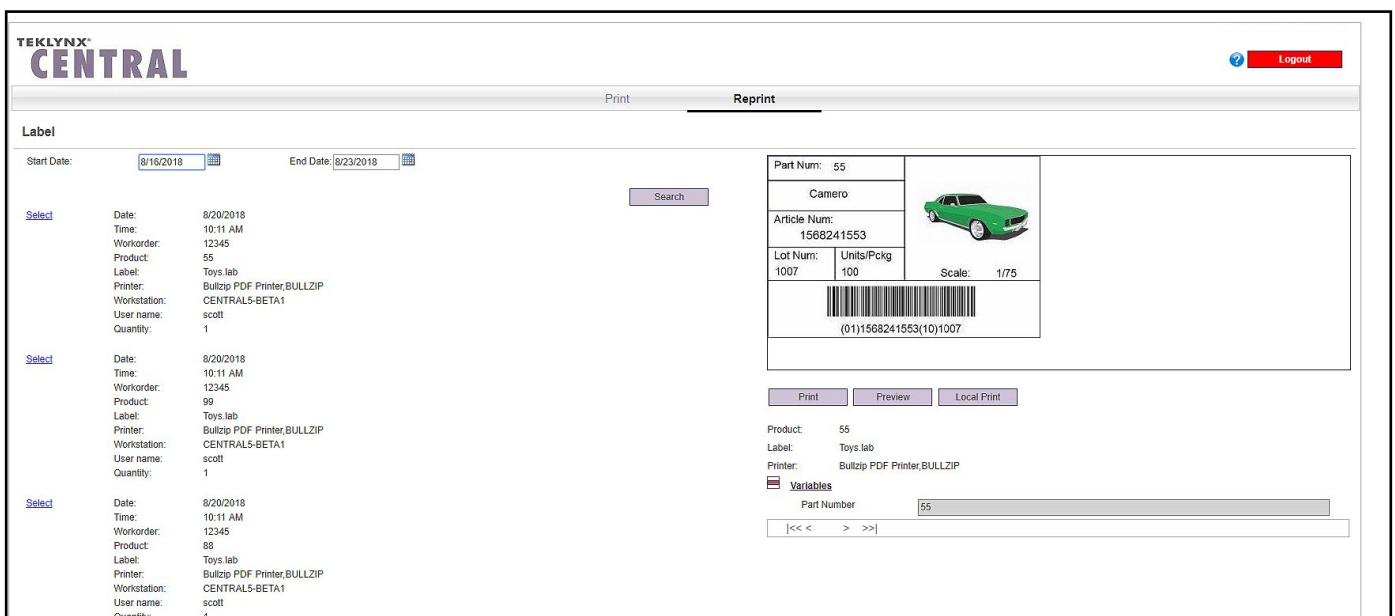
The 2018 updates to CODESOFT, SENTINEL, and LABEL ARCHIVE give TEKLYNX CENTRAL 5.0 a strong foundation for its own enhancements. Ease of use is at the forefront of this release, helping you lay the foundation for future success.

- **Built to install, backup, and upgrade easily**

- At installation, the software performs a check to ensure it's able to create the databases and/or modify the database structure, while also recognizing other databases already installed, simplifying the installation process.
- The update process is now easier than ever - by letting you choose to upgrade or install in conjunction with your existing TEKLYNX CENTRAL application, allowing your company to grow at its own pace.

- **True label reprint**

- A true reprint shows the exact data that was originally printed, including the date, unlike a label re-request which will change the print date. With this enhancement, you can now reprint a label with the original expiration dates, pack dates, or any other vital information.





TEKLYNX CENTRAL Logout

Print **Reprint**

Label

Start Date: 8/16/2018 End Date: 8/23/2018

Select	Date:	8/20/2018
	Time:	10:11 AM
	Workorder:	12345
	Product:	55
	Label:	Toys.lab
	Printer:	Bullzip PDF Printer,BULLZIP
	Workstation:	CENTRAL5-BETA1
	User name:	scott
	Quantity:	1
Select	Date:	8/20/2018
	Time:	10:11 AM
	Workorder:	12345
	Product:	99
	Label:	Toys.lab
	Printer:	Bullzip PDF Printer,BULLZIP
	Workstation:	CENTRAL5-BETA1
	User name:	scott
	Quantity:	1
Select	Date:	8/20/2018
	Time:	10:11 AM
	Workorder:	12345
	Product:	88
	Label:	Toys.lab
	Printer:	Bullzip PDF Printer,BULLZIP
	Workstation:	CENTRAL5-BETA1
	User name:	scott
	Quantity:	1

Part Num: 55	
Camera	
Article Num: 1568241553	
Lot Num: 1007	Units/Pckg: 100
Scale: 1/75	
	
(01)1568241553(10)1007	

Product: 55
Label: Toys.lab
Printer: Bullzip PDF Printer,BULLZIP

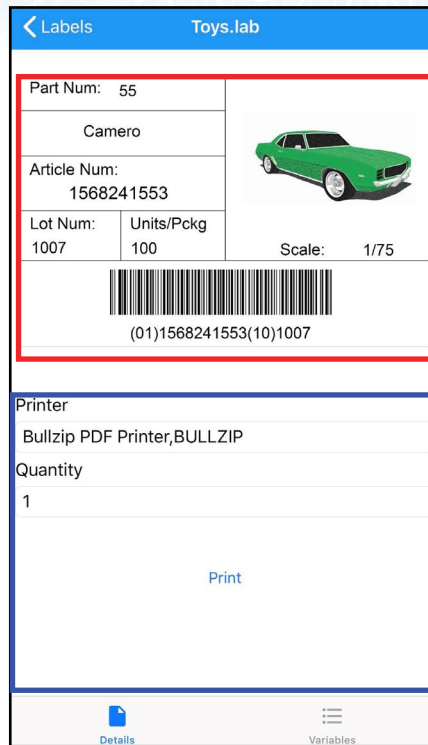
Variables

Part Number:

[<< > >>]

- **Mobile printing for Android and iOS devices**

- Put the power of TEKLYNX CENTRAL in your pocket. Use the Android and iOS mobile app to type in or scan a value, return the labels, and print. TEKLYNX CENTRAL 5.0 is right at your fingertips, at all times, helping you to work better.

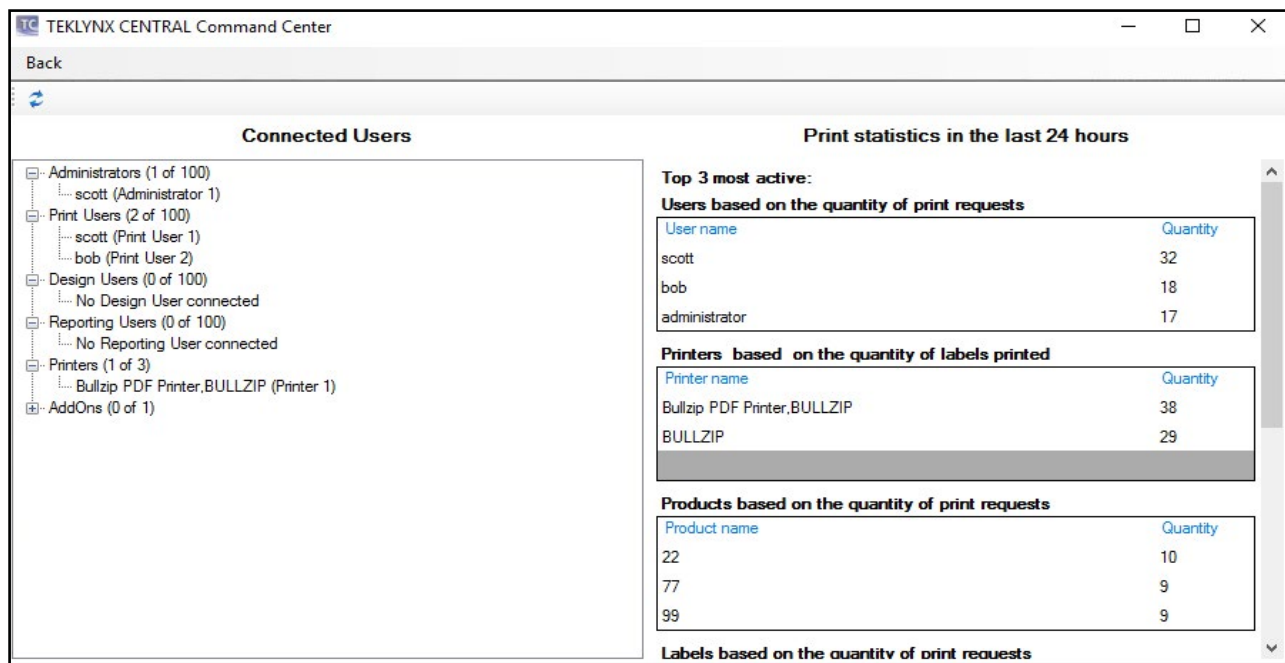


The label you design on your computer is now available on your phone.

Define your printer, quantity and other when-printed variables on the go.

- **TEKLYNX CENTRAL dashboard**

- Make intelligent business decisions by reviewing labeling activity trends that include the most active print users, the busiest printers in your labeling environment, and the most the commonly printed product labels.



- **Multiple webpages and browser printing interfaces**

- Multiple business logic drive webpages managed from one server - one enterprise label management solution now serves the specific needs of all internal and external business units. For example:
 - Employees on the production line may need to print labels by scanning a workorder number
 - Employees in the shipping department may need to print labels by scanning a pallet ID
 - Suppliers need to print labels based on your order number

TEKLYNX CENTRAL ? Logout

Print Reprint

Printing of Label:

Workorder:

Product: 22

Toys.lab

Product: 55

Toys.lab

Product: 77

Toys.lab

Product: 88

Toys.lab

Product: 99

Toys.lab

Product: 22
 Label: Toys.lab
 Part Number:

TEKLYNX CENTRAL

Options | Data Configuration | Reprint | GUI Customization

Select options that suit with your business process

General options | Display options & external database | Click Print

- Workorder**
The identifier that specifies which Product will print.
- Workstation Logic**
Determine Products and printers based on Workstation.
- Printer Logic**
Determine printer based on which Labels can print to the printer.
- User Logic**
Determine links between users, Workorders, Products and printers
- Intersection**
When multiple logics are in use, the intersection option will force the interface to display objects that are available in all of the logics in use. The default behavior will display all are available in any logic that is in use.
- Test Print**
The ability to print a test Label with a watermark.
- Reprint**
The ability to reprint a previously printed Label.
- Allow Queued Print Requests**
Allows deferred batch printing by adding Labels to queue based on Workstation/User
- Common variables**
When one variable change - all variables in Product with the same name will change too.
- Quantity of Label**
Allow user to set quantity of Label which will be printed.
- Truncate Label path**
Allow users to hide the Label path in all locations where the Label name displays.
- Use Printer Aliases**
Alias instead of Printer name on the Printing Interface Web Site.
- Remember last printer**
The last printer used to print label will be selected on Printing Interface.
- Automatic Site Log Off**
Web site logs you out automatically after period of time. Re-login is required to apply this option.
- Automatically Determine Workstation**
Determine Workstation based on static IP or MAC address.
- Clear Label Quantity**
Clear Label quantity field after the Label has been printed
- Clear variables after print**
Clear variables after the Label has been printed
- Use Windows Authentication by Default**
Use windows authentication by default on Login screen of Printing Interface
- Windows Authentication password prompt**
Windows users must enter password in printing and admin screen

Default datetime format:

Mapped Variables
Variables to be populated with mapped value.

TEKLYNX CENTRAL ? Logout

Print Reprint

Printing of Label:

Product:

Product: 33

Toys.lab

Part Num: 33

Trailer

Article Num: 1568241331

Lot Num: 999 Units/Pckg: 50 Scale: 1/100

(01)1568241331(1)999

Quantity:

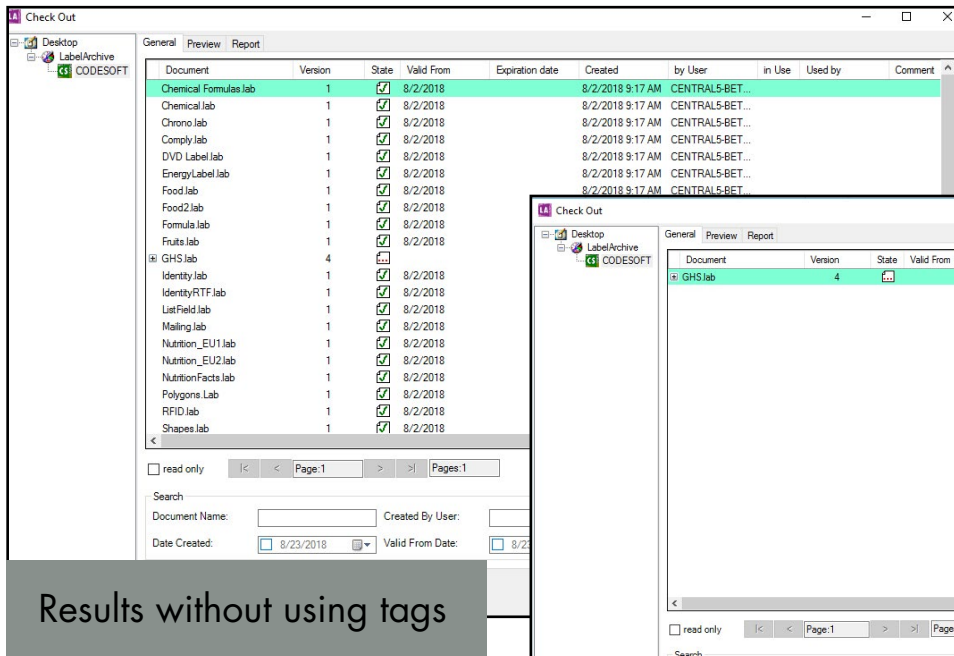
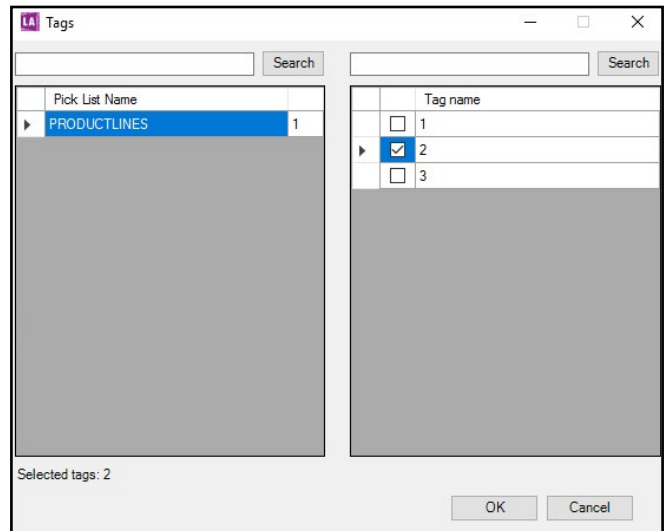
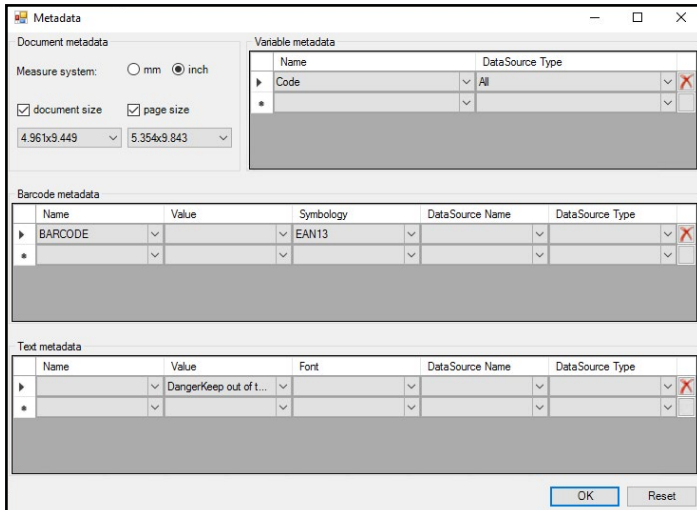
Product: 33
 Label: Toys.lab
 Printer: Bullzip PDF Printer:BULLZIP

Part Number:

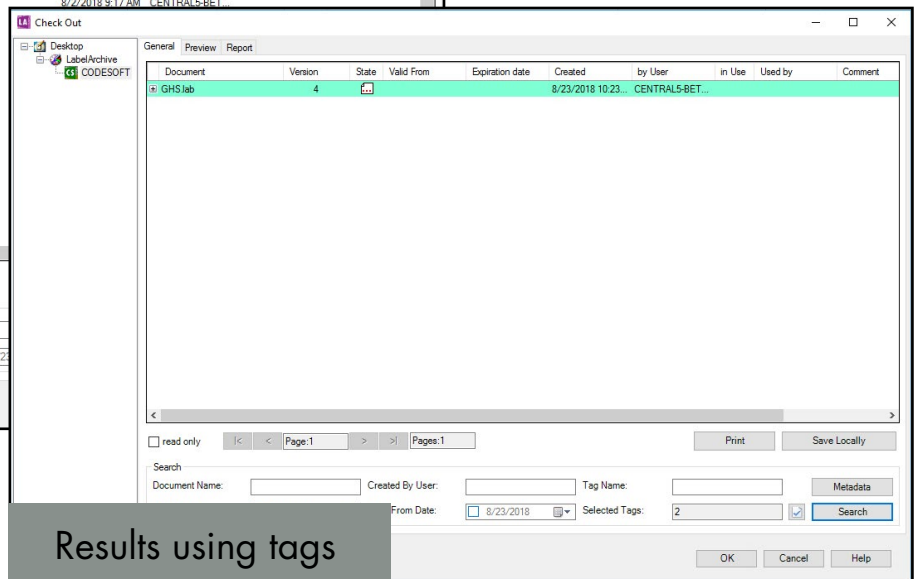
Print Reprint

• New metadata feature

- When managing many labels, existing label templates can get lost. Pre-filter your templates by label property metadata like label size, barcode type, database connection, and text, or user-generated tags like customer names and product lines. Enabling users to search for existing label templates by label metadata and tags avoids duplication of label templates, saving you time and space in your label storage area.



Results without using tags



Results using tags

Request a demo of TEKLYNX CENTRAL 5.0 today!

REQUEST A DEMO

For full technical details of all 5.0 enhancements, view the Release Notes for [TEKLYNX CENTRAL](#) on the TEKLYNX website.

www.teklynx.com