

SIMPLESEAL™

CTD SERIES – LED – TEAR DROP

PRODUCT FEATURES:

- » Surface grid mount – continuous row option
- » 4' and 8' lengths
- » Available White LED or Narrow-spectrum 570nm amber LED
- » ISO Class 3 (Fed-Std 209E/Class 1)
- » Optical system reduces glare and improves visibility
- » Low profile construction for modern aesthetic



PROJECT INFORMATION

Job Name _____

Fixture Type _____

Catalog Number _____

Approved by _____

SPECIFICATIONS:

HOUSING: Extruded marine-grade aluminum with white TGIC polyester powder coat finish – 5-step pretreatment; laboratory salt spray test: 1,000 hours (standard).

END CAPS: 10 gauge Aluminum with flattened 1/2" trade size knockout each end. Finish matches housing.

LENS: UV-stabilized, impact-resistant extruded frost acrylic. Smooth exterior with snap-in tool-less entry design.

ELECTRICAL: Serviceable mid-power white LED arrays in 3500K, 4000K and 5000K color temperatures with maximum 3-step MacAdam variation allowance. Minimum 82 CRI. Available 570nm amber (115nm FWHM bandwidth) mid-power LED arrays produce no ultraviolet (UV) and less than 0.019W of light below 480nm. 120-277VAC or 347VAC, 50/60Hz electrical input with replaceable high power factor electronic, constant-current driver (<10% THD, >0.90 PF). Minimum 85% driver efficiency. Standard 0-10V dimming with 1-100% dimming with dim-to-dark capabilities; 330µA max. source current. Optional DALI and Lutron EcoSystem dimming drivers with 1-100% range.

INSTALLATION: Intended for surface mount to t-bar grid (see Installation Details). Two (2) .281" mounting holes for 4' fixture. Four (4) mounting holes for 8' fixture. 1/2 knockout in center rear and one flattened knockout on each endcap.

WARRANTY: Limited five (5) year LED warranty.

LISTINGS: Luminaire is certified to UL standards by Intertek Testing Laboratory for Damp Location. IP53 rating per IEC60598. FED-STD 209E/Class 1 (ISO 3) Cleanrooms.



ORDERING INFORMATION (Ex: CTD-4-45L-40K8-DIM1-DV-LEL)

Model	Length	Lamp Power	Lamp Color	Driver Type	Voltage	Options
CTD						
	Length	Lamp Power			Voltage	
	4 4' Length	45L 45 Watt White LED (4' only)			DV 120-277 Volts	
	8 8' Length	45A 45 Watt 570nm Amber (4' only)			347 347 Volts	
		90L 90 Watt White LED (8' only)				Options
		90A 90 Watt 570nm Amber (8' only)				LEL* 6W Self-Testing Emergency Battery Backup with Side-Mounted Test Button
		Lamp Color*				FS Fuse & Holder
		35K8 3500K / 80CRI min.				
		40K8 4000K / 80CRI min.				
		50K8 5000K / 80CRI min.				
		Driver Type				
		DIM1 0-10V Dimming to 1%				
		DALI* DALI Dimming to 1%				
		ECO1* Lutron EcoSystem Dimming to 1%				
						* n/a with 347V input
						▲ n/a with Amber Lamp Power



www.kenall.com

P: 800-4-Kenall

F: 262-891-9701

10200 55th Street Kenosha, Wisconsin 53144

When you see this image, you will know the Kenall product shown or described is designed and manufactured in the USA with components purchased from US suppliers, and meets the Buy American requirements under the ARRA. Kenall has not determined the origin of its domestically purchased components or the subcomponents thereof. May be covered by patents found at www.kenall.com/patents. Content of specification sheets is subject to change; please consult www.kenall.com for current product details. © 2018 Kenall Mfg. Co. All rights reserved.

CTD-103018

SIMPLESEAL™

CTD SERIES – LED – TEAR DROP

PERFORMANCE – WHITE

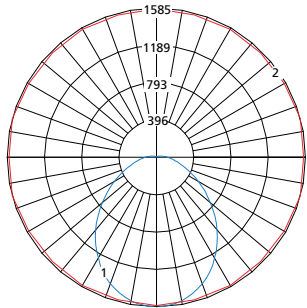
Model	Lamp Power	Initial Delivered Lumens, by Lamp Color (lm)			Efficacy (lm/W)	Input Power (W)	Estd. L70 LED Life (hrs)
		30K8	40K8	50K8			
CTD-4	45L	5,789	5,981	6,160	110 - 117	53	100,000
CTD-8	90L	11,579	11,962	12,320	110 - 117	106	100,000

PERFORMANCE – AMBER

Model	Lamp Power	Initial Delivered Lumens (lm)	Efficacy (lm/W)	Input Power (W)	Estd. L70 LED Life (hrs)
CTD-4	45A	4,241	82	52	100,000
CTD-8	90A	8,482	82	104	100,000

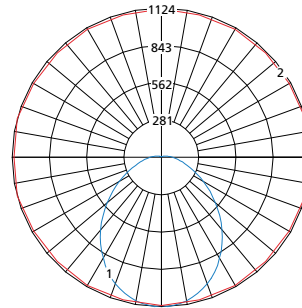
Photometry tested to the IESNA LM-79-08 standard by an ILAC/ISO17025 accredited laboratory. For photometric data, please go to www.kenall.com.

Model: CTD-4-45L-40K8-yyyy-zzz (White)



Maximum Candela = 1585 Located At Horizontal Angle = 15, Vertical Angle = 2.5
 1 - Vertical Plane Through Horizontal Angles (15-195) (Through Max. Cd.)
 2 - Horizontal Cone Through Vertical Angle (2.5) (Through Max. Cd.)

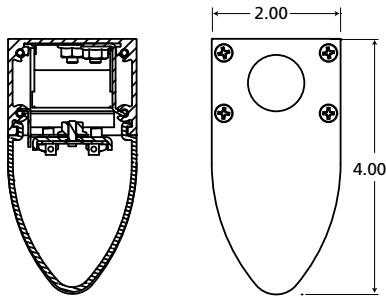
Model: CTD-4-45A-yyyy-zzz (Amber)



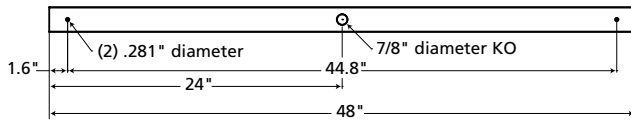
Maximum Candela = 1124 Located At Horizontal Angle = 15, Vertical Angle = 2.5
 1 - Vertical Plane Through Horizontal Angles (15-195) (Through Max. Cd.)
 2 - Horizontal Cone Through Vertical Angle (2.5) (Through Max. Cd.)

DIMENSIONAL DATA

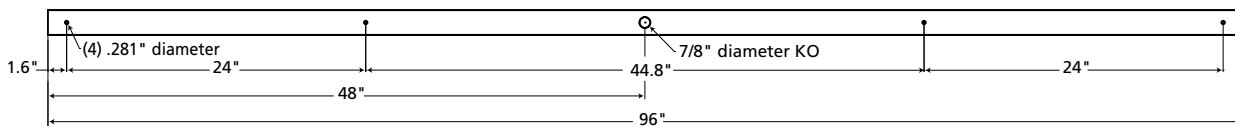
CROSS SECTION



4' MOUNTING HOLES/WIRE-FEED



8' MOUNTING HOLES/WIRE-FEED



www.kenall.com

P: 800-4-Kenall

F: 262-891-9701

10200 55th Street Kenosha, Wisconsin 53144

When you see this image, you will know the Kenall product shown or described is designed and manufactured in the USA with components purchased from US suppliers, and meets the Buy American requirements under the ARRA. Kenall has not determined the origin of its domestically purchased components or the subcomponents thereof. May be covered by patents found at www.kenall.com/patents. Content of specification sheets is subject to change; please consult www.kenall.com for current product details. © 2018 Kenall Mfg. Co. All rights reserved.