



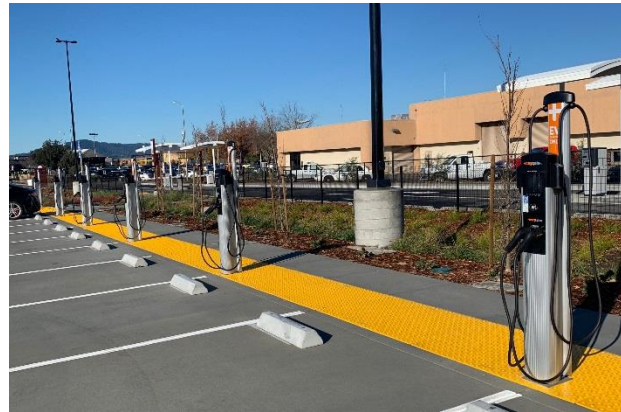
MEDIA CONTACT

Jon G. Stout, AAE, CAE, Airport Manager
Charles M. Schulz – Sonoma County Airport (STS)
County of Sonoma - Transportation & Public Works
jon.stout@sonoma-county.org
(707) 565-7243

Sonoma County Airport (STS) Long-Term Parking Now Features Electric Vehicle Charging Stations

ChargePoint and Tesla SuperCharger Stations Keep EV Driving Passengers Charged-Up While Parking at STS

Santa Rosa, Calif. (December 11, 2018) — As part of the Sonoma County Airport (STS) parking lot renovation and expansion, the Airport now offers expanded [ChargePoint](#) electric vehicle (EV) charging stations located in both the long-term parking lot and in front of the Airport terminal, and [Tesla Charging](#) Stations in the long-term parking lot. This invaluable upgrade is another feature that highlights the beneficial ways in which STS accommodates regional passengers, and is doing our part to support clean air initiatives.



New Electric Vehicle Stations at STS

North Bay consumers and Airport passengers driving zero-emission electric vehicles is a rapidly growing market. STS is excited to now be a CPO (charging point operator) for both ChargePoint — the world’s largest and most open electric vehicle (EV) charging network, and Tesla, which has a network of 1,359 Charging Stations across the nation.

STS Airport Manager, Jon Stout, says, “We’re dedicated to continually finding innovative ways to accommodate our loyal passengers and upgrade our facilities. One of the greatest benefits of utilizing STS is the hassle-free experience we provide. Providing EV charging stations is yet another way to maintain STS as the Airport of choice for regional travelers — and do something good for the environment.”

The EV charging stations at STS were partially funded through a partnership with the [Bay Area Air Quality Management District](#) (BAAQMD) [Charge!](#) Program, which provides



A HEALTHY BREATHING ENVIRONMENT FOR EVERY BAY AREA RESIDENT

funding to public agencies and businesses to expand the network of publicly available plug-in electric vehicle charging stations at workplaces, multifamily dwelling units, and public locations.

To learn more about ChargePoint or Tesla EV charging options at STS, visit:
sonomacountyairport.org/parking

About Charles M. Schulz – Sonoma County Airport (STS)

Located in the heart of Northern California's world-renowned Wine Country, STS is the only airport that offers scheduled air service into the North Bay region. Daily nonstop flights include: Alaska® Airlines to Los Angeles, Orange County, San Diego, Portland, and Seattle; American Airlines to Phoenix Sky Harbor; seasonal flights on Sun Country Airlines® to Minnesota and Las Vegas, and United Airlines to Denver and San Francisco. All Airlines offer a wide-range of connecting flights to destinations in the continental U.S., Mexico, and beyond.

Offering a hassle-free experience with shorter lines, the Charles M. Schulz – Sonoma County Airport also features convenient ground transportation, easy and affordable parking, the Alaska Airlines Wine Flies Free program and the on-site Sky Lounge Steakhouse & Sushi Bar.

For additional airport information, visit. Follow Charles M. Schulz – Sonoma County Airport on [Facebook](#) and [Twitter](#).

For further information, journalists are asked to contact airport manager Jon Stout at jon.stout@sonoma-county.org or (707) 565-7243.