

IronOrbit

All-In-One Cloud Solutions



Contents



- 1.** Company Overview
- 2.** Our Method
- 3.** Monthly Fee Breakdown
- 4.** Key Benefits
- 5.** Orbital Portal
- 6.** Orbital Security
- 7.** Orbital Support
- 8.** Our Data Centers
- 9.** Infrastructure Highlights
- 10.** Infrastructure Breakdown
- 11.** Get in touch!

Company Overview



Predictable, customized, hosted solutions that optimize IT operations, manage risk and deliver measurable business value.



Experience

- Established in 1997; 70+ Team Members
- 200+ Years of Combined Technical Experience
- 32% Average Annual Company Growth
- 1,000's of Customers (Including US Government)



Credentialed & Accredited

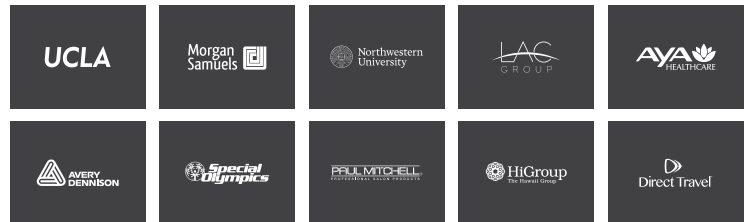
- Microsoft, Citrix, Cisco, EMC, Tier 3 (SSAE 16, SOC II) Data Centers
- MSP Alliance, Dell, HP, VMWare, IBM, Juniper
- Part of the CSA Cloud Security Alliance



Comprehensive Service Offering

- Orbital Hosted Desktops, Applications & Servers
- Scalable Solutions Customized to Client Requirements
- Zero Gravity Migration: No Disruptions to Operations
- Orbital Support: Support that Orbits your Business 24/7/365

A Few Of Our Clients



Our Method



A Partner You Can Count On.

We aim to under-promise and over-deliver in every engagement, building a mutually beneficial relationship that lasts.



A Commitment To Service.

We conduct every project with this key value in mind, working consistently to complete every project on-time and on-budget.



Results You Can Depend On.

Our commitment to reliability is expressed by always being there for you. If you're in need of service, we are never more than a phone call away, standing by to help 24/7/365.

Monthly Fee Breakdown

All these great features bundled into one low monthly payment

Free Upgrades Included Forever

- Infrastructure Hardware & Software Upgrades
- Microsoft, Anti-Virus, Patches & Updates
- Unlimited Bandwidth & Processing Upgrades

Fully Managed IT Services

- Complete 24/7/365 Monitoring & Maintenance
- Local & Off-Site Image & File Backups
- 100% Uptime Guaranteed Backed By Cloudsurance™
- PCI, HIPAA & SAE16 - IT Infrastructure Compliance

Orbital Support

- Unlimited & Free Technical Support
- 24/7/365 Application Support with Software Vendor Assistance
- 24/7/365 Peripherals & Connectivity Support
- 24/7/365 Mobile Device Support

Zero Gravity Migration

- Frictionless Migrations of Applications & Data
- No Disruption to your Operations or Users

**All-Inclusive Flat-Rate Pricing
As Low As \$39/month**

Key Benefits



COST

Significantly reduce your IT hardware and IT personnel costs. We offer fixed monthly pricing at amazing rates



COMPLIANCE

In compliance with data security regulations such as PCI DSS, HIPAA, SOX, and GLBA



WORRY-FREE

No need to be monitored, maintained, protected, or supported by anyone at your company



ACCESSIBILITY

Consolidate all of your company's files and applications onto a single, anywhere-accessible IT infrastructure



SCALABILITY

Scalable services, so you can add users, processing power, and storage capacity to them at any time, and not have to replace them every time your business expands



COMPATIBILITY

Compatible with all of your applications, including legacy and custom apps

Orbital Portal

Giving You Complete Control Over Every Aspect Of Your Cloud Infrastructure

It's one thing to have your IT assets hosted in the cloud. It's quite another to have complete control over your cloud infrastructure. The orbital portal gives you the "keys to the kingdom," letting you manage and control everything from user accounts and permissions to mobile devices and desktops. Completely customize your cloud infrastructure from one convenient interface. The orbital portal is accessible from anywhere, on any device!

Desktops



Tablets/Phones



Laptops



USER MANAGEMENT

- Create/Remove Users
- Manage Passwords
- Security Access Management

MICROSOFT EXCHANGE MANAGEMENT

- Forwarding & Distribution Group Management
- User Security Management
- Mobile Device Management

DESKTOP MANAGEMENT

- Provision New Desktops
- Restart a User's Desktop
- Configure Applications

Orbital Security

Keeping Your Systems Safe, Secure And Operational, 365 Days A Year.

Every year, businesses lose billions of dollars in revenue due to poor security. Cyber-criminals take advantage of firewall vulnerabilities and weak passwords. Viruses wreak havoc on systems, causing performance lag and data loss. Physical damage at data centers leads to server downtime and lost data.

Protecting yourself and your business from these risks should be a top priority for any business. Unfortunately, most businesses do not have adequate measures in place to ensure truly impermeable security. The good news is, when you host your cloud systems with IronOrbit, you are protected by world-class security measures on **four separate fronts:**



**Physical and
Environmental Security**



**Logical and
System Security**



**Operational
Security**



**Backup and
Disaster Recovery**

Orbital Support



Personal Support : We assign a dedicated support team who will provide knowledgeable and personal service.



Rapid Resolutions : We provide quick resolutions to all technical issues, with a goal of complete resolution on the first phone call.



Taking Ownership : We take ownership of any issues including local Internet or application specific issues.



US-Based Support : Our support team is based right here in the USA, guaranteeing clear and personable service 24/7/365.



Rapid Escalation : We have senior engineers standing by to take calls pertaining to the most complex technical issues.



In The Loop : We provide support updates and upgrades on an ongoing basis to keep you future-proofed.

IronOrbit



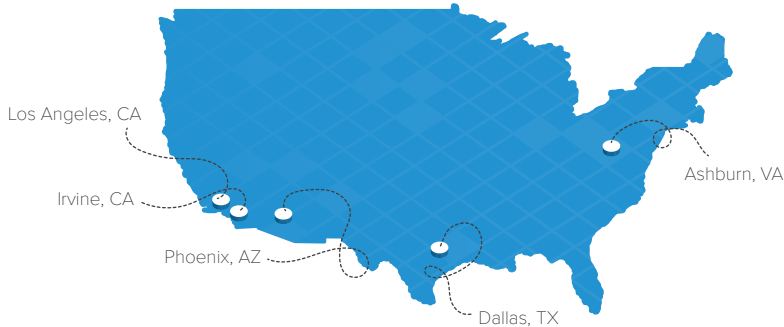
Support That's There For You When You Need It

With over 500 certifications in technology, our highly trained and experienced technicians are fully accredited in all areas of cloud-hosted IT. Our team is available 24/7 to help you with any technical issues you're experiencing.

Our Data Centers

The Cutting-Edge Infrastructure Our Servers Are Built On

We operate a geographically dispersed network of data centers spanning the entire nation. With centers based on the West Coast, East Coast and Midwest, our servers are geographically redundant and thus protected from issues affecting any one location. All facilities are equipped with redundant Internet connectivity, advanced cooling systems and robust security measures, to ensure unbeatable uptime, security and performance.



HVAC Redundancy

- Cooling Systems
- Raised Flooring
- Fire Suppression Systems
- Advanced Smoke and Fire Detection Systems



Security Protection Systems

- Biometric Palm Readers
- 24/7 Closed-Circuit Video Monitoring
- 24/7 Alarm Monitoring
- 24/7 Security Team



Non-Stop Power

- Uninterrupted AC and DC power
- Emergency Generators



Infrastructure Highlights



SPEED

- SMX™ Speed Technology For Blazing Fast Performance
- SMX™ Stream Networking For Intelligent Route Optimization
- SMX™ SureStart For Reliable High Performance Connectivity



CONNECTIVITY

- Top Tier Data Center Facilities For Global Connectivity
- 24/7 Data Security Monitoring Including IDS & IPS
- System Access Audit Logging & File Access Reporting
- Network Content Filtering & Active Firewall Protection
- Fully Scalable N+1 Architecture



BACKUPS

- Complete Infrastructure Backups For Disaster Recovery
- Off-Site Encrypted Replication to Multiple Data Centers
- 100% Uptime Backed By Cloudsurance™

SMX™ Speed Technology

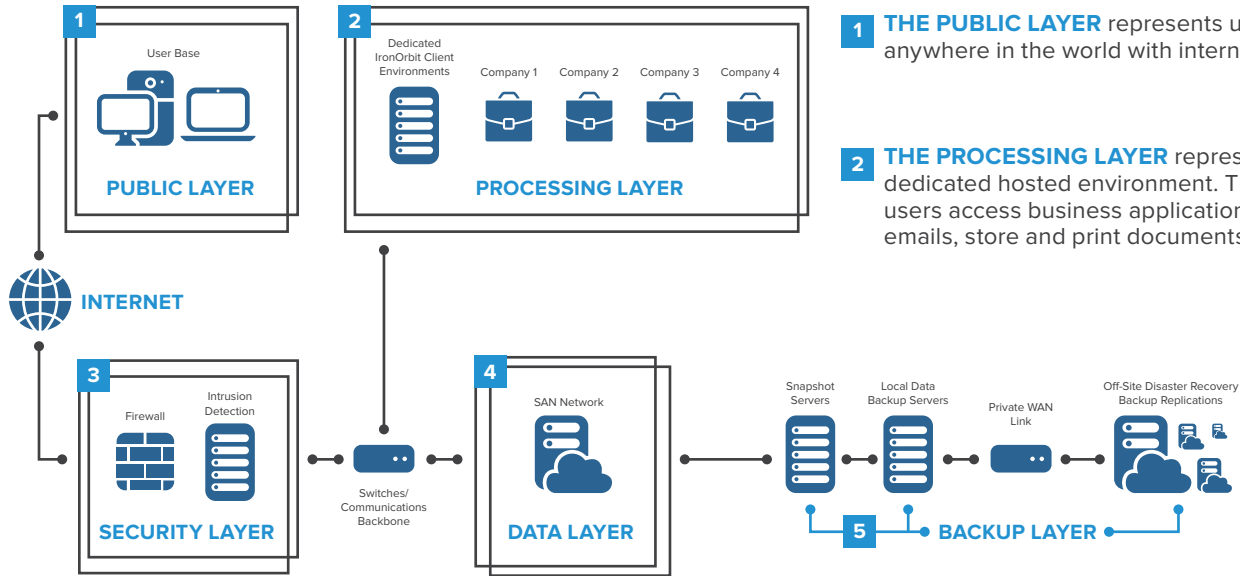
SMX Speed Technology™ is a proprietary stack of technologies, protocols and best practices

SMX Speed Technology™ is the architectural foundation of both the storage and network layers of IronOrbit hosted desktop platform.

Key components of SMX Technology™ include intuitive, trend-based disk I/O caching and network optimization algorithms that predictively, self-tune to deliver optimal desktop performance under any load or network condition.

Active user data and application processes are cached into high-speed memory pools, enhancing the response time of the application and data.

Infrastructure Breakdown



1 THE PUBLIC LAYER represents users that are anywhere in the world with internet access.

2 THE PROCESSING LAYER represents your dedicated hosted environment. This is where users access business applications, check emails, store and print documents.

3 THE SECURITY LAYER represents the corporate security infrastructure designed to protect you from malicious viruses, spyware, and hackers.

4 THE DATA LAYER represents the subsystem of the IO environment that stores all of your company's data.

5 THE BACKUP LAYER represents the subsystem of the IO environment that stores & backs up all of your company's data.

Get in touch!

IronOrbit

www.ironorbit.com

5101 E. La Palma Avenue
Suite 200
Anaheim Hills, CA 92807



Sales Department

sales@ironorbit.com

Support Center

support@ironorbit.com

Career Opportunities

careers@ironorbit.com

Partner Opportunities

partners@ironorbit.com

Sales & Support

(888) 753-5060



Fax

(888) 603-9033