

Service Description

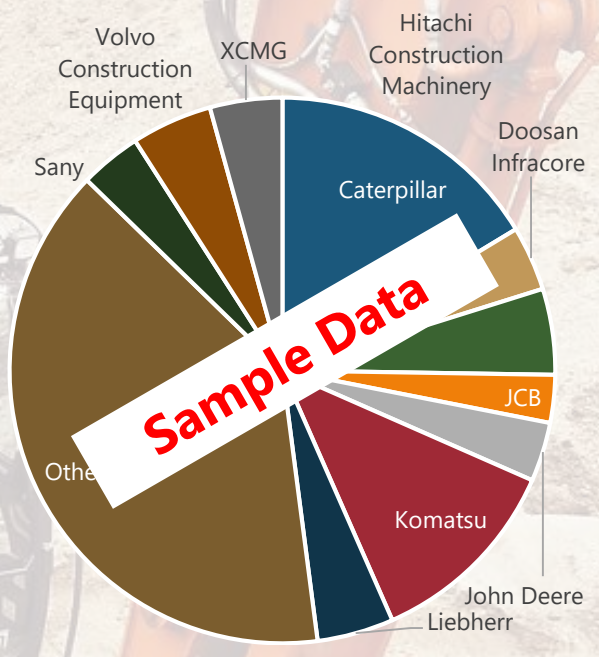
Electric Vehicles have been penetrating the passenger vehicle market significantly, but what is the story for commercial vehicles? Motivations and incentives are different in this sector where latest-and-greatest pales in comparison to ROI. Within PTR's e-Mobility segment, this new database has been designed to look deeper into these vehicles, complimenting both the EV Charging Infrastructure (EVSE) Service as well as the Battery Benchmark Service.

PTR has focused on the six major segments of the commercial vehicle market. Many segments have different drivers and market dynamics, not to mention a myriad of OEMs providing solutions.

Fig1. Vehicle Segments Covered



Fig 2. Sample Market Share (Construction)



What is Included

- Dataset with vehicle units for both conventional and electrified commercial vehicles in above six segments (see next pg.)
- Power BI Dashboard for interactive analytics on the data to support quick analysis on the dataset
- Market Share of top manufacturers (OEMs) by each vehicle segment.
- Live dashboards for quick access to industry news, important sources and update log.
- Analyst comments on key market trends.

Key Questions Addressed

- What is the ICE market for specific vehicle types?
- Who are the top manufacturers in each segment?
- Where are these vehicles produced?

Applicable to

- Commercial Vehicle Manufacturers
- Vehicle Component Suppliers
- Charging Infrastructure Providers
- Financing and Insurance Entities

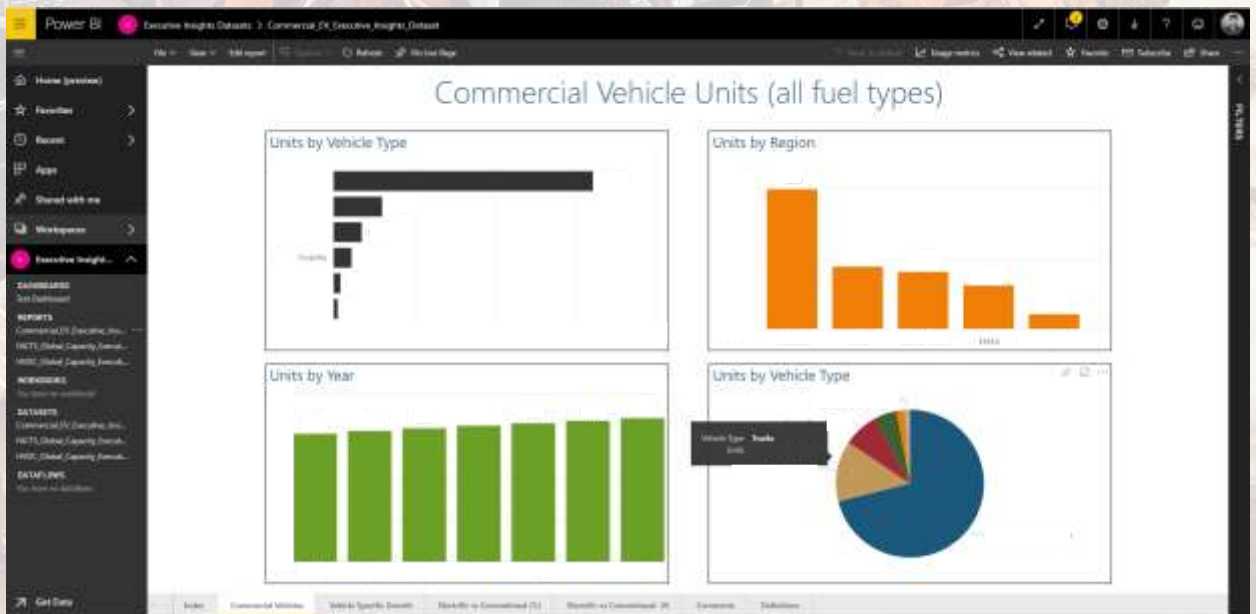
Excel Output Tables

Customers can download the excel tables at any point in time. Table below is the sample output table with two vehicle types. Coverage includes this data for all 6 commercial vehicle types discussed.

Vehicle Type	Region	Units	Category	2018	2019	2020	2021	2022	2023	2024
Buses	United States	Units	Conventional	xxx	xxx	xxx	xxx	xxx	xxx	xxx
Buses	Rest of Americas	Units	Conventional	xxx	xxx	xxx	xxx	xxx	xxx	xxx
Buses	Rest of APAC	Units	Conventional	xxx	xxx	xxx	xxx	xxx	xxx	xxx
Buses	China	Units	Conventional	xxx	xxx	xxx	xxx	xxx	xxx	xxx
Buses	Japan	Units	Conventional	xxx	xxx	xxx	xxx	xxx	xxx	xxx
Buses	EMEA	Units	Conventional	xxx	xxx	xxx	xxx	xxx	xxx	xxx
Buses	United States	Units	Electric	xxx	xxx	xxx	xxx	xxx	xxx	xxx
Buses	Rest of Americas	Units	Electric	xxx	xxx	xxx	xxx	xxx	xxx	xxx
Buses	Rest of APAC	Units	Electric	xxx	xxx	xxx	xxx	xxx	xxx	xxx
Buses	China	Units	Electric	xxx	xxx	xxx	xxx	xxx	xxx	xxx
Buses	Japan	Units	Electric	xxx	xxx	xxx	xxx	xxx	xxx	xxx
Buses	EMEA	Units	Electric	xxx	xxx	xxx	xxx	xxx	xxx	xxx
.....
5 more vehicle types										

Power BI Report & Dashboards

The main report provides all splits of data with analysis on market trends for overall vehicles and electrification. In addition, two dashboards are provided, one covering OEM announcements, and the second covering updates to the report in between data refreshes.



Contact Us

+1 408 622 0456 (North America and ROW) +49 (0)89 12250949 (Germany)