



RUGGED. RELIABLE. REAL.

Venturo Hydraulic Service Cranes HT45KX



SPECIFICATIONS

Lifting Capacities:	7,800 lbs
Crane Rating:	45,600 ft-lbs
Mounting Space:	17" x 17"
Stowed Height:	36-5/8"
Winch:	
Rope Diameter:	3/8" @ 100'
Line pull speed:	60 ft/min @ 12 GPM (<i>Single-line</i>)
(<i>Max Weight</i>)	9 ft/min @ 3 GPM
Max. Single-line:	3,900 lbs
Max. Double-line:	7,800 lbs
Rotation:	400°
Power Supply:	PTO & Pump Required
Requirements:	12 gpm @ 3000 psi
Hydraulic Req:	25 or 40 gal reservoir
Boom Elevation:	-8° to +75°
Controls:	VLC™ (Venturo Logic Controls) Standard Wireless Remote
Boom Extension:	12' - 18' - 25' Full Hydraulic
Winch:	60 ft/min @ 12 GPM (<i>Single-line</i>)
Hydraulic Req:	12 GPM with 25 gal reservoir
Minimum Vehicle Class:	Class 5 (16,001 - 19,500 lbs GVWR)

FEATURES

Venturo VLC™ (Venturo Logic Controls)

Venturo's new Electronic Crane Control Management System provides added safety and benefits for crane operators.

Benefits include a standard, wireless, pistol-grip controller, overload protection which controls and prevents any type of overload, LCD Display Screen alerts, transmitter handle vibrations, green/yellow/red alert lights under boom, and corresponding lights on the receiver. The LCD display shows percentage of load, boom angle in degrees and percentage of total capacity during crane operation. The VLC™ system also provides vehicle stability and grade control.

Full-Hydraulic Extension

The standard boom length for the HT45KX is 25' which is perfect to reach certain areas at the jobsite.

New Auto Adjust Anti-Two Block

Innovative, rugged and compact anti-two block design automatically adjusts to boom angle. Minimizes hook-to-boom tip height and is less prone to damage.

New Boom Tip Worklight

Optional worklight that automatically adjusts to the boom angle so you can follow your load anytime.

NOTE: All Venturo service cranes meet ANSI B30.5 and OSHA 1910.180 specifications. Specifications subject to change without notice.

Copyright © 2018. Venco Venturo Industries LLC. All Rights Reserved 09/18

Venco Venturo Industries LLC
12110 Best Place | Cincinnati, Ohio 45241
800-226-2238 | 513-772-8448 Local
info@venturo.com | www.venturo.com





Venturo Hydraulic Service Cranes HT45KX

RUGGED. RELIABLE. REAL.

EQUIPPED WITH
VLC
VENTURO LOGIC CONTROLS



Multiple Safety and Capacity Alerts

Green/Yellow/Red alert light located on the underside of the boom.



Overload/Stability Safety

The VLC system controls and prevents any type of overload on the crane and also providing stability and grade control.

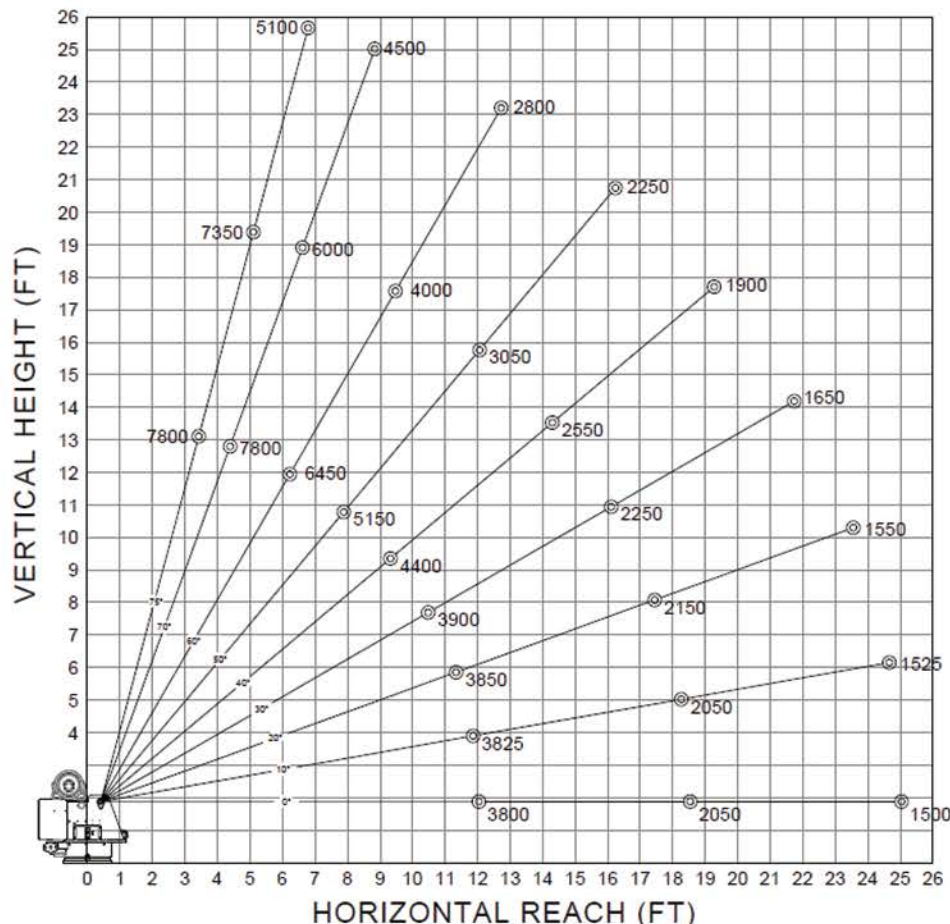


Wireless Remote

Wireless remote, pistol-grip controller. This will be a standard feature as part of the VLC™ system for ALL proportionally-controlled hydraulic Venturo service cranes.



MAXIMUM LOAD CAPACITY CHART



NOTE: All Venturo service cranes meet ANSI B30.5 and OSHA 1910.180 specifications. Specifications subject to change without notice.

Copyright © 2018. Venco Venturo Industries LLC. All Rights Reserved 08/18

Venco Venturo Industries LLC
12110 Best Place | Cincinnati, Ohio 45241
800-226-2238 | 513-772-8448 Local
info@venturo.com | www.venturo.com

