



WinCan

FOR IMMEDIATE RELEASE

Contact:

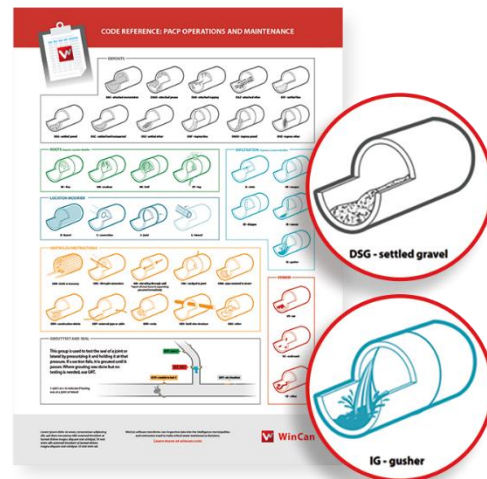
Mike Russin, General Manager
(877) 626-8386
mail@wincan.com

WinCan Releases Second in Series of Guides for PACP 7 Defect Codes

This FREE poster provides clear illustrations of operation and maintenance defects and their corresponding codes.

Pittsburgh, PA—February 14, 2019—WinCan, a market leader in sewer asset management software and inspection data storage, continues its series of reference guides for PACP 7 codes with the release of a poster depicting operation and maintenance defects. This poster groups defects by category, illustrates how they look within pipelines, and lists the coordinating PACP defect codes. In addition, it depicts the procedure for documenting grout seal tests.

The National Association of Sewer Service Companies (NASSCO) developed the Pipeline Assessment Certification Program (PACP) in conjunction with the Water Research Centre (WRC). This program provides a standard framework for sewer operators, engineers and other pipeline inspectors to use when documenting defects and observations. PACP ensures consistent, reliable data from multiple operators over time. The poster will aid new operators when learning PACP and will serve as a reference tool for experienced operators.



“PACP is invaluable to the industry,” says Mike Russin, general manager for WinCan in the Americas. “But with so much detail, it can be easy to mix up defect codes. And unless you’re using artificial intelligence, even the best software can’t identify mis-coded defects. The more accurate your data, the more effective your maintenance workflow will be; this poster makes it easy to choose the right defect every time.”

Request a copy of this poster free of charge at <http://inbound.wincan.com/en-us/operations-and-maintenance-codes-poster>. This poster is offered as part of WinCan’s dedication to creating resources for the water and wastewater industry.

About WinCan

WinCan was the original pipe inspection and asset management software when it entered the market 25 years ago. Today, it’s the most trusted pipeline software brand worldwide, thanks to continuous innovation and



WinCan

exceptional support. WinCan transforms raw inspection data into the intelligence municipalities and contractors need to make critical maintenance decisions. The software's measurement tools help to quantify defects, and sophisticated search capabilities filter observations by any combination of criteria. Its report generator automatically summarizes inspection findings using a standard or user-defined template. Native support for GIS mapping, side-scanning and 3D are among WinCan's most innovative features.

In the Americas, WinCan is uniquely positioned to deliver support, training, customization and integration with all common municipal databases and mapping software programs. WinCan works directly with end users, and also with inspection equipment manufacturers, helping them deliver integrated hardware/software solutions that allow their customers to document, analyze and report pipeline condition.

###