

PUP & PONY[®]

By Plant Therapy

When using essential oils with animals, it's important to always start slowly. Introduce our Pup & Pony Essential Oil Blends by diluting a small amount of the blend in a carrier oil, applying it to your palms, and presenting your palms to your dog or horse to check their reaction. If your animal has an aversion to the blend do not force them to smell it. Your animal will accept the blend if he/she feels comfortable, and only then should you move on to the application methods shared in the following pages. Creating a positive connection with the essential oils is one of the most important considerations, so avoid overwhelming your animal companion with the scent.

Create a positive connection by applying the blend to yourself for the first few days. This allows your animal to start associating the scent of the blend with you, their beloved person. When you're ready to apply the blend to your animal (or start diffusing) try picking an activity your dog or horse enjoys while using the blend at the same time. Try giving your dog a belly scratch during application, or letting your horse munch on their favorite treat.

DILUTION RATES:

Essential oils should not be used with animals under 10 weeks old.

Dogs 25 lbs or less: 0.25-0.5% dilution

Dogs 25 lbs to 50 lbs: 0.5-0.75% dilution

Dogs more than 50 lbs: 0.75%-1% dilution

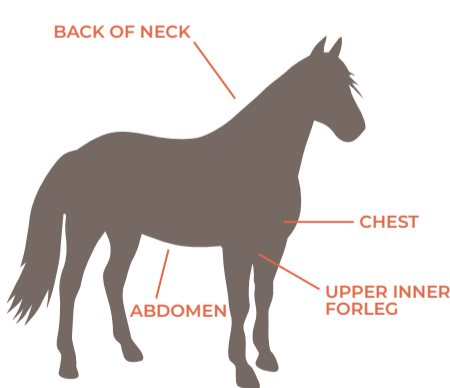
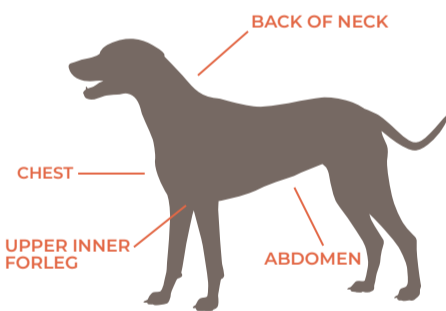
Horses: 1-2% dilution

Remember, these dilutions are recommendations for topical application over a large area using Plant Therapy's Pup & Pony essential oils only. We always recommend starting with the lowest dilution and adding more as needed for specific applications.

Pup & Pony Products are intended to be used with dogs and horses. Do not diffuse near or use these blends topically on cats, birds, aquatic animals, rodents, etc.

For more information please visit planttherapy.com.

AREAS OF APPLICATION



PLANT THERAPY INC.
510 2ND AVE S.
TWIN FALLS, ID 83301
1-800-917-6577
PLANTTHERAPY.COM

CONFIDENT K9:

Confident K9 was formulated for dogs who struggle with being alone. It helps promote relaxation, support doggy confidence, and soothe worry. Whether it's excessive barking or shaking to chewing on belongings or clawing at your front door, Confident K9 can help! While Confident K9 was created specifically with dogs in mind, it is also safe and effective for horses who may struggle with similar issues.

Directions: Diffuse using 1-2 drops per 100 mL of water for 5-10 minutes every few hours. Passive diffusion is also a great option. Try adding 1-2 drops to a cotton ball and tucking that cotton ball underneath the cover of your dog's bed. For topical application dilute to 0.25-2% depending on your animal's species and weight. Apply the diluted blend to the upper, inner foreleg, chest, or back of the neck. For best results apply the blend 5-10 minutes before your animal is exposed to the stressful situation to allow the effects to begin.

Ingredients: Blood Orange, Atlas Cedarwood, Vetiver, Ylang Ylang Complete, and Rose Absolute

Cautions: Do not use if animals are pregnant or under 10 weeks old. For use with dogs and horses. Dilute for skin application. Keep out of reach of children and pets.

HAPPY TRAILS:

Happy Trails was created to make traveling easier for your dogs and horses. Our four-legged friends can experience motion sickness during travel just like humans. This blend's scent is soothing to your animal's upset stomach, and also works to comfort your animals so they stay calm and worry-free.

Directions: Diffuse using 1-2 drops per 100 mL of water for 5-10 minutes every few hours. This blend can also be used at low levels in our Diffuse on the Move diffuser. For topical application, dilute to 0.25-2% depending on your animal's species and weight. Apply the diluted blend to the abdomen taking care to avoid any sensitive areas.

Ingredients: Lemon, Sweet Orange, Ginger Root CO2, Australian Sandalwood, Lavender, and Peppermint

Cautions: Do not use if animals are pregnant or under 10 weeks old. For use with dogs and horses. Dilute for skin application. Keep out of reach of children and pets.

HORSE WHISPERER:

Just like humans, dogs and horses can develop fear and anxiety disorders after a traumatic experience. Trauma is especially common in rescue animals but also occurs during events we may not normally consider, such as forced weaning, continuous use of ill-fitting tack, etc. This blend helps to calm and comfort animals while supporting their emotional healing process. While Horse Whisperer was created specifically with horses in mind, it is also safe and effective for dogs who may struggle with similar issues.

Directions: Diffuse using 1-2 drops per 100 mL of water for 5-10 minutes every few hours. Passive diffusion is also a great option. For topical application, dilute to 0.25-2% depending on your animal's species and weight. Apply the diluted blend to the upper inner foreleg, chest, or back of the neck.

Ingredients: Bergamot, Himalayan Cedarwood, Frankincense Carteri, Roman Chamomile, Neroli

Cautions: Do not use if animals are under 10 weeks old or pregnant. For use with dogs and horses. Dilute for skin application. Keep out of reach of children and pets.

SHOW READY:

Show Ready was created to keep your dogs and horses healthy. Dogs and horses become more susceptible to illness and disease during times of travel, stress, when being boarded for long periods of time, or when exposed to other ill or unfamiliar animals. This blend utilizes essential oils that will help to support the immune system and offer protection from illness.

Directions: Diffuse using 1-2 drops per 100 mL of water for 5-10 minutes every few hours. Passive diffusion is also a great option. Try adding 1-2 drops to a cotton ball and tucking that cotton ball underneath the cover of your dog's bed. For topical application dilute to 0.25-2% depending on your animal's species and weight. Apply to the chest, or back of the neck 1-2 times daily during those times when your animals are more susceptible to illness.

Ingredients: Frankincense Carteri, Pink Grapefruit, Lavender, Palmarosa, Niaouli 1,8-cineole, and Thyme Linalool

Cautions: Do not use if animals are under 10 weeks old or pregnant. For use with dogs and horses. Dilute for skin application. Keep out of reach of children and pets.

As pet owners, our team doesn't settle for anything less than safe, high quality products when it comes to our furry friends.

-Plant Therapy