

THE SANTULAN

3	BEDROOM	3.5	BATHROOM	1910	SQUARE FEET
---	---------	-----	----------	------	-------------

UNITS 21 - 22

INTERIOR CONDITIONED  
1911 SF

COVERED UNCONDITIONED  
255 SF

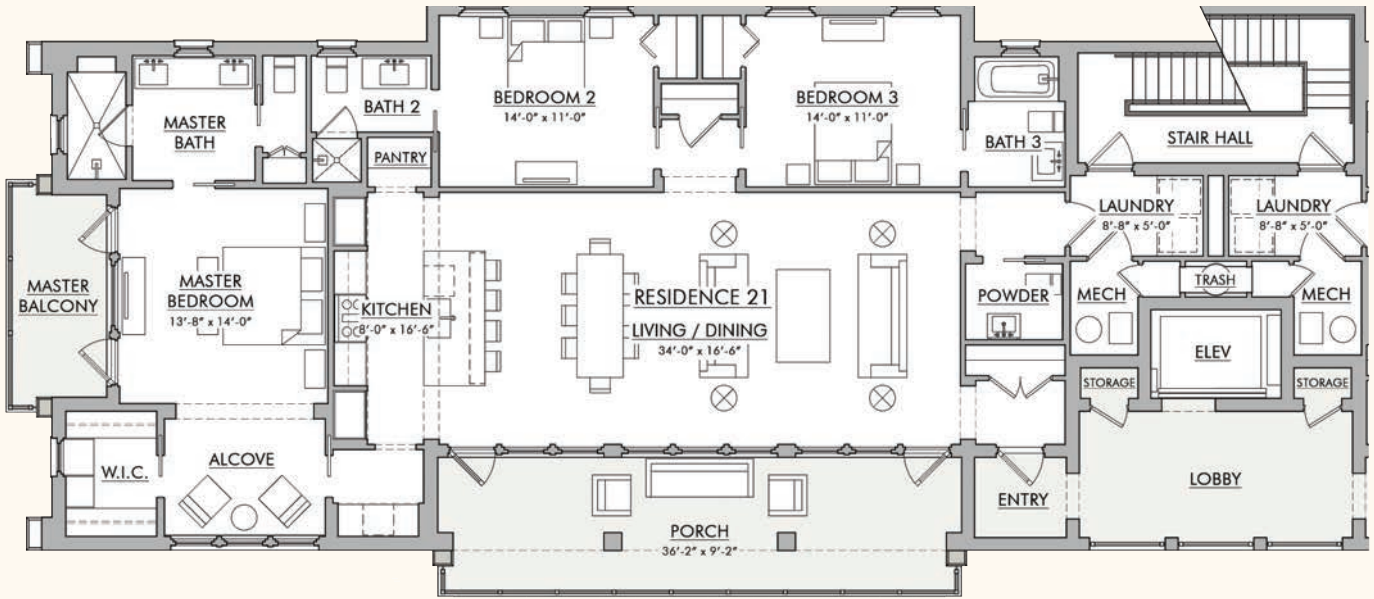
UNITS 31 - 32

INTERIOR CONDITIONED  
1909 SF

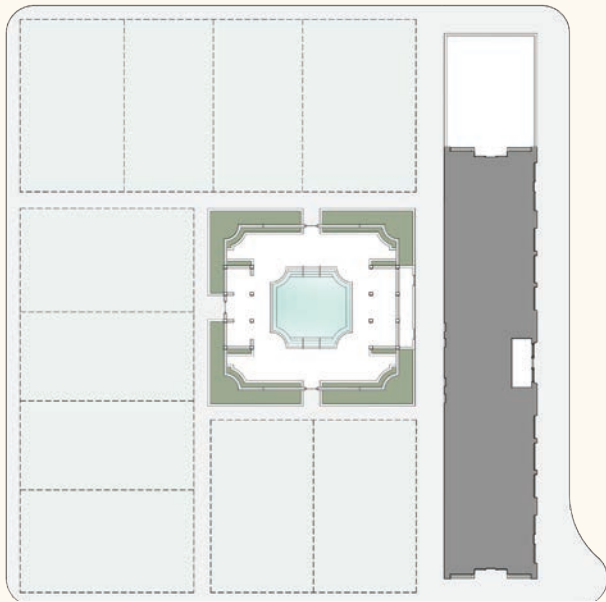
COVERED UNCONDITIONED  
257 SF

KAIYA  
BEACH RESORT





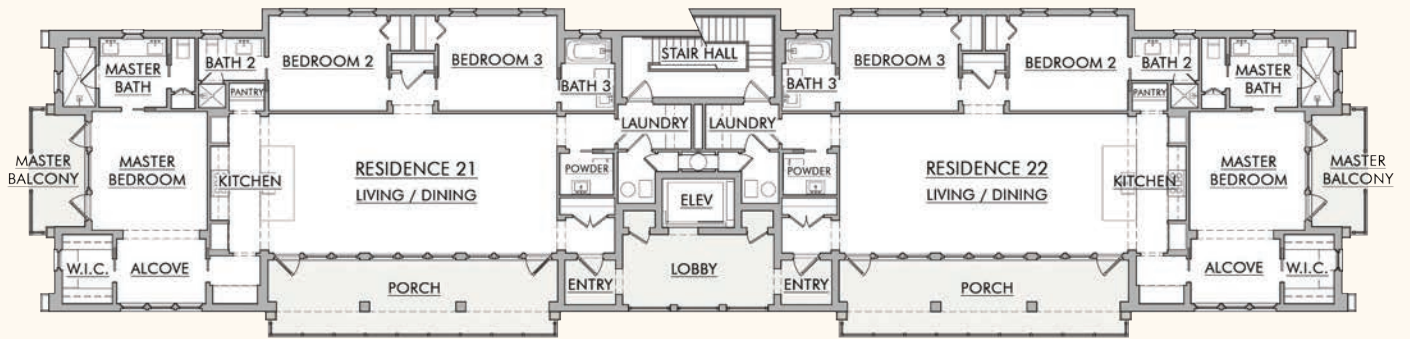
UNIT PLAN



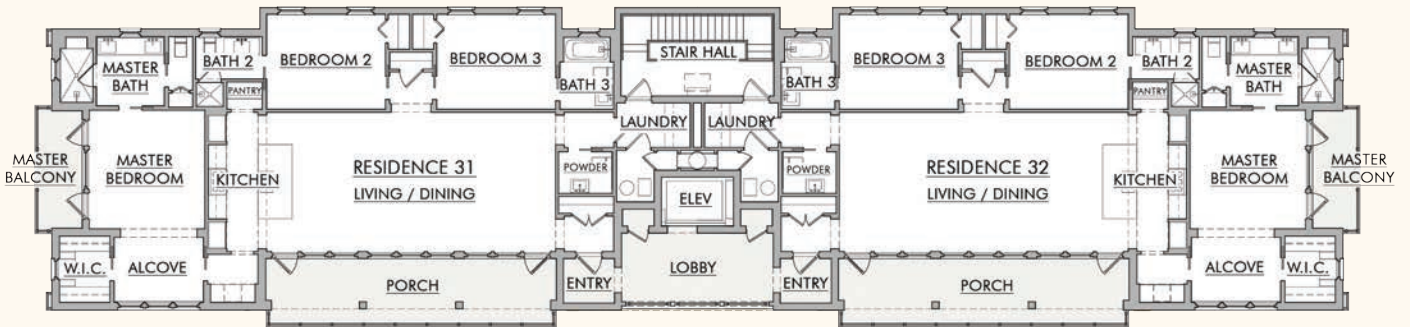
SITE PLAN



SOUTH ELEVATION



SECOND FLOOR



THIRD FLOOR



EAST ELEVATION

## INCLUDED FEATURES

### EXTERIOR

Steel-Troweled Stucco Over  
Concrete and Masonry Walls

Custom-Stained Wood Siding

Sierra Pacific Hurricane-Rated, Clad-Wood  
French Doors and Windows

### INTERIOR

Large-Format Concrete Pavers with  
Pre-Finished Stained White Oak Planks

Custom-Designed Painted Wood Kitchen Cabinetry  
with Caesarstone Counters and Backsplash

Subzero and Wolf Appliance Suite

Custom-Designed Painted Wood Bath Cabinetry

Marble Tile and Marble Counter in Bathrooms

Waterworks Kitchen and Bath Plumbing Fixtures,  
Fittings and Accessories

Custom-Designed Painted Wood Doors

Emtek Door and Cabinetry Hardware

## PREMIUM FEATURES

### INTERIOR

Veneer Plaster Finish in the Living Room, Kitchen,  
Dining, and Master Bedroom

Home Automation System

Premium Pantry Package: Ice Maker, Undercounter  
Refrigerator with Freezer or Wine Refrigerator and  
Built-In Coffee Machine

**KVA**

KHOURY|VOGT  
ARCHITECTS