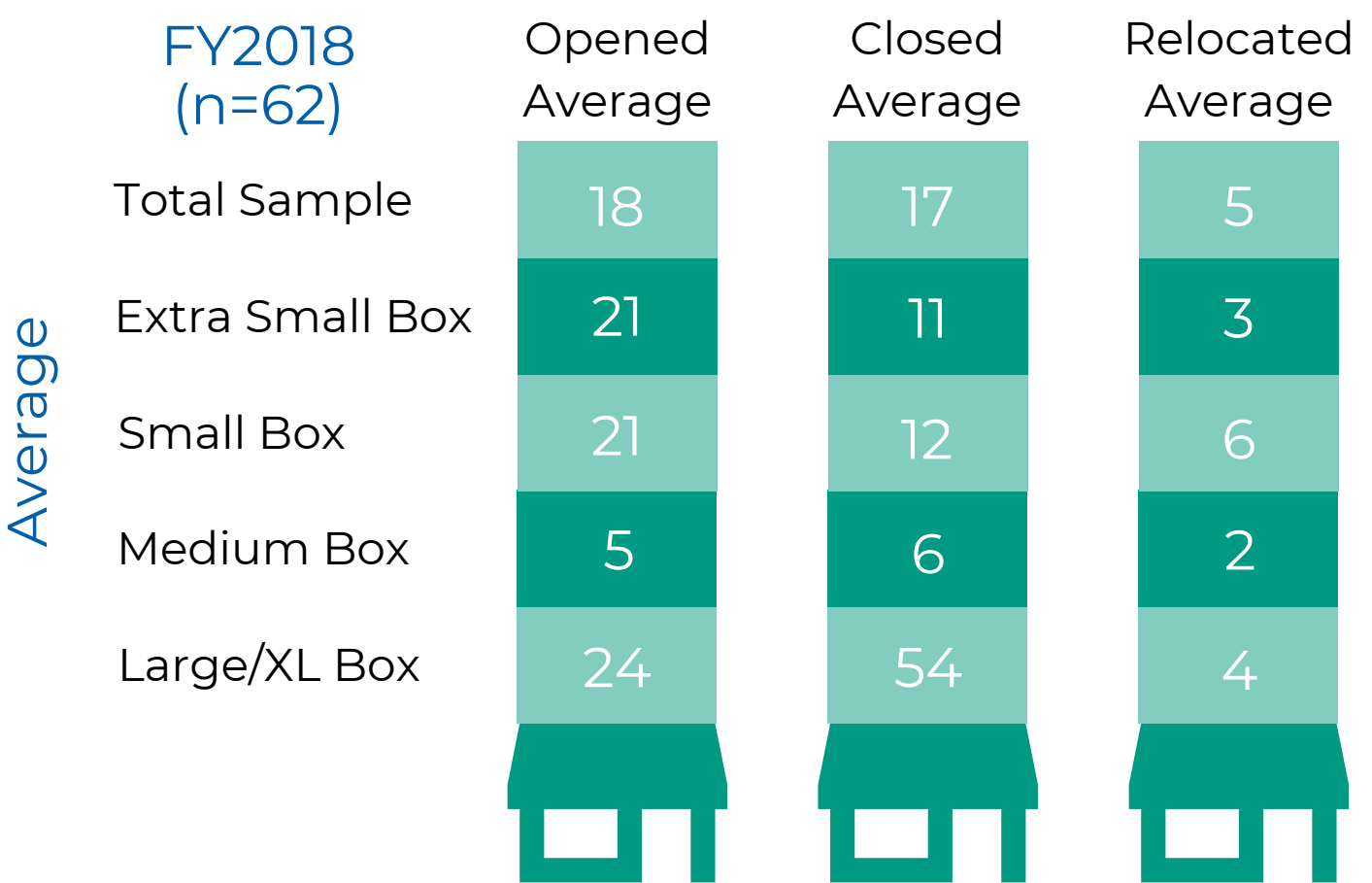


What FMs Need to Know About Dark Stores

More than 110 major retailers have closed their doors due to the COVID-19 outbreak. Thousands of store locations have gone dark since March 2020.



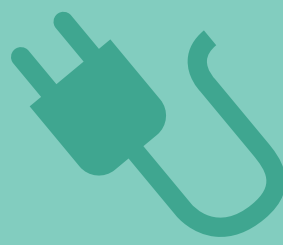
Average Number of Retail Stores Normally Opened, Closed or Relocated Annually



Top Dark Store Challenges for Retailers



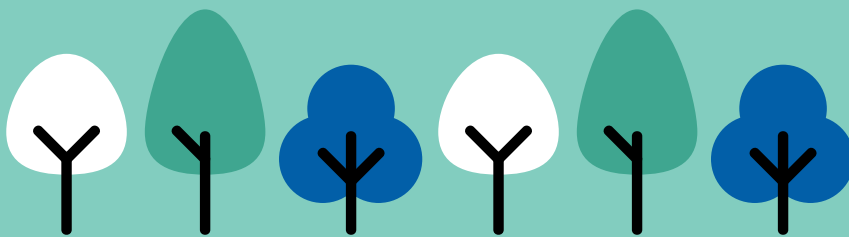
Security



Systems Management (HVAC, Water, Electric)



Ongoing Site Assessment



Exterior Maintenance and Landscaping

Problems Associated with Dark Stores



Reduced Property Values



Increased Criminal Activity



Greater Possibility of Fire



Decreased Tax Base