

**FORMASPACE**  
CONTRACT FURNITURE

# COVID-19 PRODUCT RESPONSE

C | P | R Bring your office back to life



C | P | R Bring your office back to life

A message to our customers & industry partners,

As we look forward to bringing back those workday routines that symbolize the reawakening of our economy and a global return to business, we are here to support you in making those daily interactions safe and healthy. We find ourselves in a time of new awareness that a virus can stop the world as we know it. Our COVID-19 product response catalog can provide you with some solutions that will allow you to get back to those workday routines with the proper defenses in place to keep you healthy and productive.

As a follow up to our DEFCON series CPR catalog last week, we have put together a more comprehensive response with our full line of products to help bring your office back to life including some feature articles on how we're helping companies like GM get back to work. We want to help revive the economy while keeping our focus on the health and safety of your clients and employees. Our full COVID-19 product response features designs we currently manufacture but we want to remind you that our strength lies in producing unique and custom solutions driven by your needs. These products are a great start & we encourage you to come to us for any custom designs or unique problems requiring a more tailored Solution.

We're in this with you. Contact us with your specifications and we will get you pricing and lead-times right away.

From all of us at Formaspace Contract,

Let us help you stay apart so we can work together!



P 4-5 : DEFCON Series

DEFCON-1

DEFCON-2

P 6-7 : Mobile Shields

512 Communication Board

InvisiShield

P 8-9 : Partitions

Gallery Panels

360

Arbor Walk

P 10-12 : Desking Solutions

Privacy & Modesty Panels

Surfaces

Weldmarx©

P 13-14 : Finishes

P 15 : In the News

P 16 : Contact Us



DEFCON stands for defense readiness condition and our DEFCON series of products will ensure you have the proper defenses to get back to work. These health shield & sneeze guard solutions will increase your defense against any airborne virus in the workplace keeping yourself and those around you healthy and productive. Please contact us with any custom needs as these cost-effective, highly versatile products can be adjusted to respond to your unique needs.

## DEFCON-1

### Protective Health Shield



DEFCON-1 is our maximum defense against the spread of airborne germs. This U-shaped health shield is made from a highly durable product called HDPE. This solution is an easy add-on to any office design to quickly bring your workplace up to the standards required to guard against COVID-19 and other airborne threats. When your highest priority is the health and safety of your employees & customers, DEFCON-1 is your first defense.

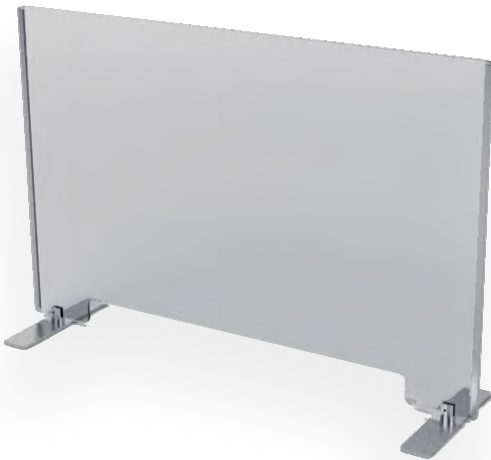
- Made from HDPE (High density polyethylene)
- Aluminum foot plates
- Available in black, white, or gray
- Easy to clean and sanitize
- Approved for both indoor & outdoor applications
- Highly durable & versatile
- Cost effective solution
- Easy to install & remove without damage to the worksurface
- Custom sizes available upon request





## DEFCON-2

### Counter Sneeze Guard



DEFCON-2 is perfect for businesses that have face-to-face interactions with customers on a daily basis. This sneeze guard design aids in protecting the health and safety of employees & customers from transmitting any airborne germs that could lead to illness. Installing DEFCON-2 will not only protect employees and customers from airborne pathogenic organisms but also reduce the risk of spreading COVID-19 or other airborne viruses.

- Made from clear 1/4" thick acrylic
- Aluminum frame and legs
- 22 different leg & frame finishes available
- Easy to clean & sanitize
- Lightweight
- Standard pass-through slot (extra for additional cuts)
- Easy to install and remove (no damage to the work surface)
- Custom sizes & materials available upon request

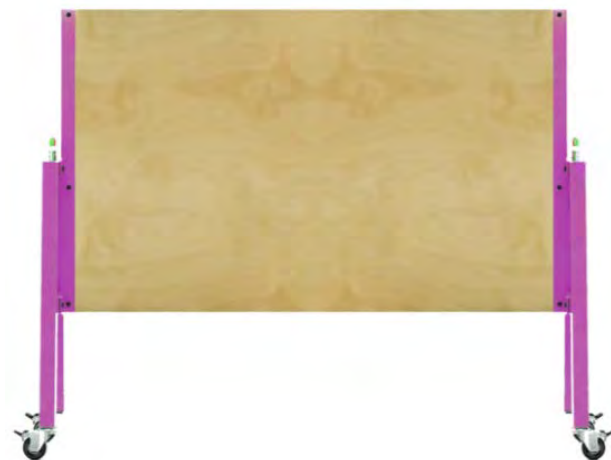
Mobile shields are now a necessity in the workplace but that doesn't mean you should compromise your design or interfere with your workflow. In fact, this is an opportunity to add to the design and offer features that help the workflow such as mobile communication. These multi-purpose panels act as physical barriers for airborne germs while also giving you visual privacy and a secondary surface to capture notes. Create the perfect amount of social distance while sharing your ideas with these smart solutions.

## 512 COMMUNICATION BOARD



512 mobile dry-erase boards not only work as a communication tool but also serve as a partition panel between desks. Move them around the office and use them as either a protective shield or utilize them for sharing your ideas. The custom options available allow you to express yourself in more ways than one with 24 standard frame options available. The Baltic Birch finish adds warmth to any space & the durable design provides a playful solution to meet both your health & brainstorming session requirements

- Standard sizes: 34" W x 22" D x 78" H
- 2-sided baltic birch with dry erase finish
- Steel frame
- 24 powder coat finishes available
- Locking casters



## INVISISHIELD



The InvisiShield provides a sleek and sophisticated solution for space division. The glass option has the additional feature of mobile communication with its dry erase capability. These easy to clean panels can be customized to fit any space. When you want to maintain that open office aesthetic while adding a barrier, our InvisiShield is the obvious choice. This workplace accessory is both smart and beautiful.

- Standard size is 68" H x 36" W x 18" D
- Available with casters or standard levelers
- Glass versions have dry erase capability
- Acrylic versions are excellent barrier protections but are not dry erase compatible
- Units ship flat and require field assembly
- Custom cutout and sizes available

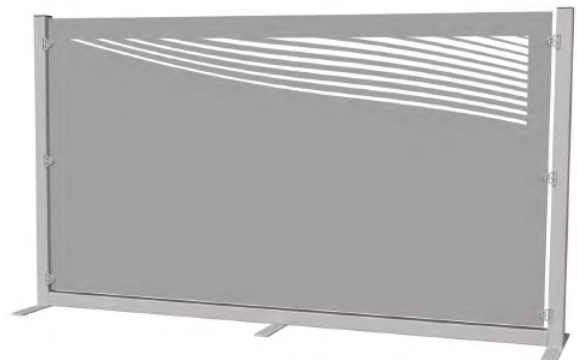
Keeping your workplace safe is of the utmost importance. Partitions allow us to be divided so we can safely work together. In this time of new health guidelines and restrictions, we can help you create barriers while still giving you plenty of opportunity for unique and branded solutions. These are fully customizable designs and we urge you to contact us with your specific needs.

## 360 GALLERY PANELS



Our 360 Gallery Panels provide a unique and highly customizable solution for space division. These steel screens are available in a variety of shapes and colors giving you the ultimate in creative expression for dividing space in your workplace.

- Vertical or Horizontal sizes available
- Laser cut steel or solid steel
- Hackable gallery panels (interchangeable middle panels)
- 24 different powder coat finishes available





## ARBOR WALK



Arbor walk is a full height partition at 68" high providing visual privacy while acting as a protective health shield. The felt panel also provides acoustic sound dampening properties perfect for those open office plans. The well-crafted aesthetic of the gray felt panels and leather straps make this a designer favorite. However, our reputation for customization is no exception here. We can apply a number of different materials to these panels and work with you to come up with the configuration that works best for your needs.

- Full height partition panels to be used between desks or in open office plans for dividing spaces.
- 65" W x 6" (Top) - 25" (Base) D x 68"H
- Steel frame
- Grey felt with Leather straps (different materials are available)
- 24 different powder coat finishes available
- Sound dampening properties



If you have workstations you need to retrofit or perhaps have decided to consider entirely new desking solutions, we have all the options you need to address the health & productivity of your workplace.

From privacy panels, to Phenolic non-porous worksurfaces, to sit-stand desking solutions, we can provide the parts required to get you back to business as usual.

## PRIVACY & MODESTY PANELS



Our privacy and modesty panels are a quick and easy addition to any office design needing a retrofit to address new health & safety requirements. We can work with your current layout while offering a multitude of finish & design options making this an opportunity to add a new design element to refresh your current workplace while adding the necessary safety features required.

- Can be installed separately or together
- Privacy panel material options listed as
  - Solid steel
  - Laser cut steel
  - Perforated steel
  - All powder coat finishes available
  - Acrylic
  - Felt
  - Tact board
- Modesty panels material options listed as
  - Solid steel
  - Laser cut steel
  - Perforated steel
  - All powder coat finishes available
  - Acrylic
  - Laminate
  - Glass



## SURFACES



Easy-to-clean, sanitized surfaces are mandatory to keeping your employees and clients healthy. The safety standards for worksurfaces have changed. Highly durable, non-porous surfaces that perform well with direct daily use of chemical cleaners will replace laminate surfaces. With almost 40 years of laboratory furniture experience, Formaspace can transform your workplace by applying lab quality countertops to meet today's new standards giving you peace of mind while getting back to work.

- All chemical, bacteria, corrosive, heat, and moisture resistant
- Phenolic resin countertops
  - Totally nonabsorbent
  - Unique appearance
- Epoxy Resin Countertops
  - Highest chemical resistance for long lasting visual appeal
  - Low lifetime total cost of ownership
- Stainless steel countertops
  - 0% absorbency for easy sterilizing
  - Beautiful, timeless appearance
  - 100% recyclable

## WELDMARX®



Weldmarx® was our introduction into the contract furniture business and it's never been more fitting than now. Named for its industrial aesthetic, its equally strong and versatile. Weldmarx® is a natural solution when user directed change is necessary to meet health requirements. With 1000-pound weight capacity for it's sit-to-stand feature, it has both the beauty and the brawn to withstand any workplace environment. For added curve appeal and proprietary design requests, Weldmarx® offers laser cut privacy panels available for your custom design needs. This solution is truly where form meets function.

- 60" W x 30" D x 30" H  
(custom sizes available)
- Height adjustable 30" - 42"
- Locking casters for mobility
- Industrial aesthetic
- Laser cut steel privacy panel option  
(other materials available)
- Steel frame
- 24 powder coat finishes
- 1000 lb. load capacity



## FINISHES

### HDPE & PHENOLIC COLORS



White



Gray



Black

### LEG & FRAME FINISHES



Pastel Green  
RAL 6019



Textured White  
WH120



Textured Black  
BK59



Gloss Black  
BK266



Pastel Blue  
RAL 5024



Salmon Orange  
Ral 1012



Pearl White  
RAL1013



Satin Nickel  
HM512514



Burgundy  
HS212R7



Navy  
HS212B518



Sage  
RAL6021



Turquoise  
RAL6027



Beige Gray  
RAL1019



Melon  
RAL1028



Golden Hour  
RAL1018



Silver Gray  
RAL7001



Violet  
RAL4008



Mauve  
RAL4009



Rose  
RAL3015



Rust  
RAL8023



Fern  
RAL6025



Gloss White  
WH11



## EPOXY COUNTERTOP COLORS

### Standard Colors for Epoxy Resin Tops



Black Onyx



Graphite



Dark Khaki



Tan



Gray



Lunar White

### Alternative Colors for Epoxy Resin Tops



Bronze



Ivory



Pearl



Platinum



Steel Blue



Alpine White



Forest Green



Pacific Blue



Rewter



Sand

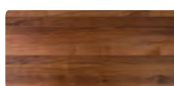
## HARDWOOD TOPS



Hardwood Maple



Hardwood Oak



Hard Walnut



## IN THE NEWS


 [https://home.myresourceibrary.com/wp-content/uploads/2020/04/April-2020-Vol-1\\_\\_\\_.pdf](https://home.myresourceibrary.com/wp-content/uploads/2020/04/April-2020-Vol-1___.pdf)

 <https://www.linkedin.com/feed/update/urn:li:activity:6656943729028460544/>

 <https://media.gm.com/media/us/en/gm/news.html>

 <http://dashboard.mazsystems.com/webreader/67162>

 <https://www.bizjournals.com/austin/news/2020/04/17/austin-company-helps-gm-convert-car-factory-to.html>

 [https://www.prweb.com/releases/formaspace\\_builds\\_esd\\_workbenches\\_for\\_ventilator\\_production\\_at\\_gms\\_kokomo\\_indiana\\_manufacturing\\_facility/prweb17052971.htm](https://www.prweb.com/releases/formaspace_builds_esd_workbenches_for_ventilator_production_at_gms_kokomo_indiana_manufacturing_facility/prweb17052971.htm)



# COVID-19 PRODUCT RESPONSE

C | P | R Bring your office back to life

**FORMASPACE**  
CONTRACT FURNITURE

CONTACT US! WE ARE HERE TO HELP.



CONTACT FORMASPACE DESIGN CONSULTANTS



[hello@formaspaceoffice.com](mailto:hello@formaspaceoffice.com)



(800)251-1505