

EverGreen Wholehouse Carbon System

Enjoy Bottled-Quality Water From Every Faucet

The EverGreen Wholehouse Carbon System is designed to remove residual amounts of both chlorine and chloramine in your home tap water. These chemicals are added to necessarily disinfect public water supplies. However, if not removed from your water before entering your home, these chemicals give your tap water an unpleasant smell and taste, and even dry out your hair and skin.

Customized Treatment Especially for Your Water

The EverGreen is a POE (Point of Entry) system, customized to your home's water condition and needs. The supply water enters the media tank where it flows through activated carbon media which traps the unwanted chlorine chemicals and organics. The result is clear, bottled-quality water to every tap in the house!



Plastic is the number one emerging contaminant in water today.

No Plastic Bottles



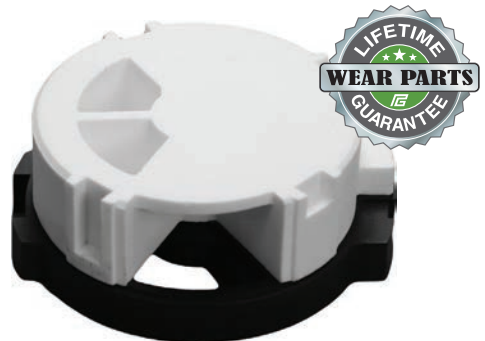
With an analysis of your home's water, we can help you choose the best system for your needs.



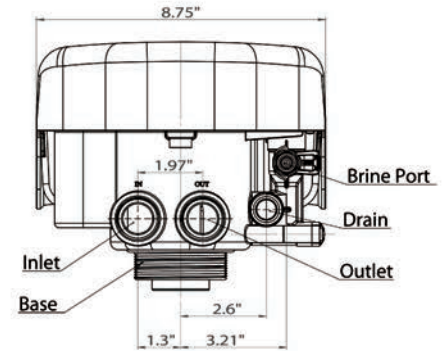
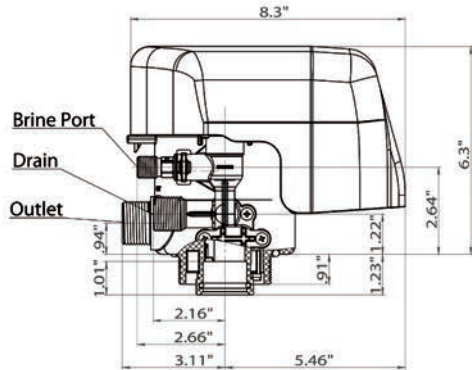
Designed with the Environment in Mind

- **Save Resources.** Drink better tasting, bottled-quality water available 24/7 without the expense, plastic containers, and trips to the store.
- **Feel Healthier.** Enjoy softer skin, silkier showers and smoother hair.
- **Serve with Confidence.** Offer odorless water, right from the tap.
- **Built to Last.** Lifetime warranty on ceramic and graphene internal parts.

To see which EverGreen Wholehouse Carbon System is for you, contact Pargreen today for the dealer nearest you.



EverGreen Wholehouse Carbon System



EverGreen Wholehouse Carbon System Specifications

Model*	Resin Cubic Feet	Overall Height Inches	Diameter Inches	Flow Rate Gallons Per Minute ₁	Water (Gallons) Used Per Regeneration ₂	Gallons Per Minute in Backwash	Gallons Per Regeneration Chl ≤ 1 PPM ₃
FSG54-CC	1.5	60.9	10	6	88	4.89	1,500
FSG52-CC	2	59.0	12	12	119	6.60	2,000
FSG1354-CC	2.5	61.4	13	14.5	146	8.10	2,500
FSG1465-CC	3	72.2	14	18	146	8.10	3,000
FSG1665-CC	4	72.1	16	24	247	13.70	4,000

* Additional Sizes Available

1 - Flow Rate at 4 GPM/Cubic Foot

2 - Usage Based on Water Supply Quality; Usage ± 10%

3 - Based on 500 Gals/Cubic Foot

Electrical / Operational Specifications

Control Valve		Working Conditions	
Transformer Input	120VAC - 60Hz	Water Pressure	20 -120 PSI
Transformer Output	12VDC - 2A	Water Temperature	35°F - 125°F
Valve Wattage	24W	Chlorine Level ₄	1 to 4 PPM

4 - For Over 4 PPM, Contact PWT Technical Support

Control Valve Parameters

Inlet	Outlet	Drain ₅	Brine Line	Base	Riser Tube	Raw Water Bypass
1"	1"	1/2" Barb	3/8"	2.5" - 8NPSM	1-1/4"	Yes - During Regeneration

5 - Drain Connection Also 3/4" MNPT

Additional Specifications

Valve Material	Tank Material	Meter Accuracy	Clock
Noryl®	FRP	± 5%	12 Hour - with Battery Back-up