

MODSCOPE[®]



Berg Engineering's Modular Videoscope

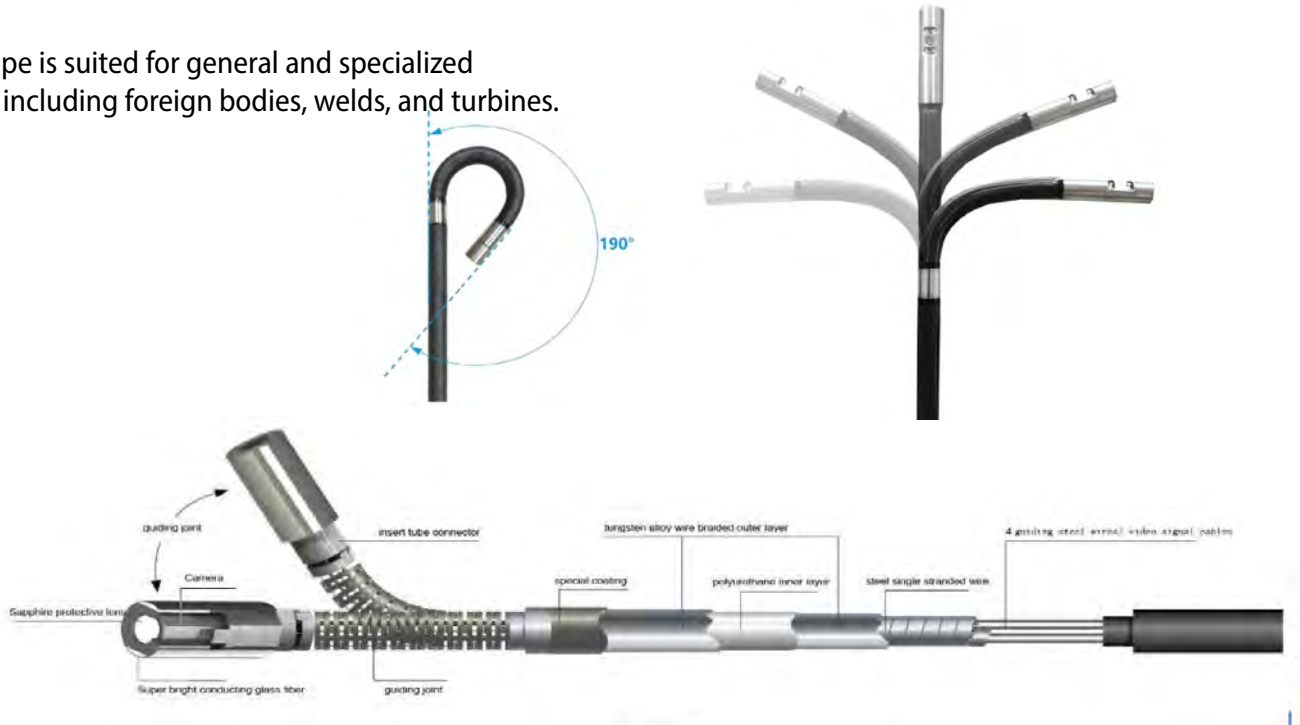
An HD videoscope system designed to provide an efficient maintenance solution, the ModScope offers superior probability of detection for Automotive, Aerospace, Energy, Oil & Gas, Pharmaceutical, Food & Beverage, and Manufacturing industries.



Interchangeable, Articulating Probes

The ModScope Videoscope features probes with 360° all-way articulation for defect detection in any location. A maximum bending angle of 160° provides operators with exact positioning, further boosted by a super-bright LED with an illuminance up to 55,000 lux or a fiber optic light source at 100,000 lux. Probes are interchangeable to meet inspection requirements and improve probability of detection (POD).

The ModScope is suited for general and specialized inspections, including foreign bodies, welds, and turbines.



8mm Ø

6mm Ø

4.2mm Ø

3.8mm Ø

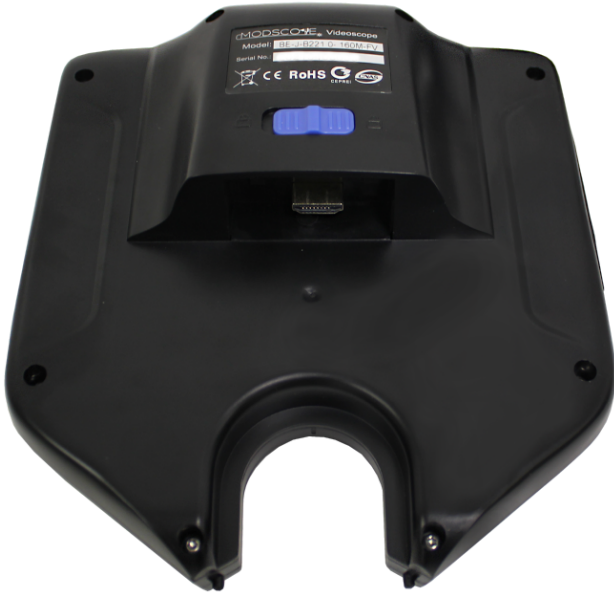
2.8mm Ø

2.2mm Ø

- Probe lock button for improved accuracy and efficiency
- 8.0mm, 6.0mm, 4.2mm, 3.8mm, 2.8mm, and 2.2mm diameter options
- Front view, 90° side view, and dual lens viewing direction options
- Durable construction with 5 layers of braided tungsten
- Probe lengths from 1.0-10.0 meters

Modular Design

The ModScope Videoscope utilizes a modular design to meet various inspection requirements. The touchscreen monitor and probes can be easily changed in the field at the push of a button. The ModScope provides an efficient maintenance solution with customizable configurations and high-quality performance. In the event of damage, the modular design allows for convenient and cost-efficient replacement of the display or probe.



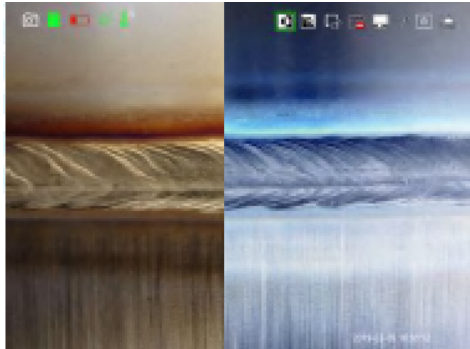
Rechargeable Batteries

The included 3.7V Lithium Ion batteries provide ≥ 8 h of working use. Battery indication is shown on the bottom of the handle, providing real-time information on charge level. Batteries are detachable and can be internally charged using a micro USB cable or externally in the battery charger.



Intelligent System

The ModScope Videoscope features an intelligent system that facilitates the quality inspection process. With a user-oriented design, operators can inspect for unapparent defects in challenging spaces with features made for use when and where they're needed.



Negative Film Mode

Analyze the finer details of defects during routine inspections with a negative film mode that reduces glare and reflections caused by lighting. Determine the depth and severity of defects in material with confidence.



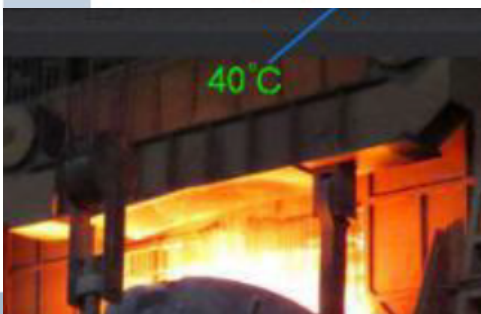
Real-Time Zoom

Take a closer look at defects with 8x digital zoom in real-time and in image review. Operators can search for unapparent defects more intuitively in hard-to-reach places.



Scale

Measure and compare relative size of defects during inspection with improved accuracy by utilizing an onscreen scale.



Temperature Indication

An optional temperature alarm alerts the operator when the temperature rises above 149°F, and shuts down at 176°F. Temperature is displayed onscreen and color-coded for added benefit.



Package Includes

Modscope 5.1" Videoscope, Probe, Stand, (2) Batteries, Charger, Charging Cable, Data Cable, SD Card, Card Reader, Manual, Carrying Case, 1 Year Warranty on Parts & Labor

Probe	Camera Diameter	8mm	6mm	4.2mm	3.8mm	2.8mm	2.2mm
	Illuminance	Super LED: 55,000 lux Fiber Optic: 100,000 lux	Super LED: 40,000 lux Fiber Optic: 90,000 lux	Fiber Optic: 20,000 lux	Super LED: 10,000 lux Fiber Optic: 20,000 lux	Fiber Optic: 20,000 lux	Fiber Optic: 15,000 lux
	Probe Length & Bending Angle	1.5m/140° 2.0m/130° 3.0m/100° 4.0m/80° 5.0m/70° 8.0m/60° 10.0m/40°	1.5m/160° 2.0m/150° 3.0m/120° 4.0m/100° 5.0m/90° 8.0m/80° 10.0m/60°	1.0m/160° 1.5m/150° 2.0m/120° 3.0m/70°	1.0m/160° 1.5m/150° 2.0m/120° 3.0m/70°	1.0m/130° 1.5m/100° 2.0m/70°	1.0m/80° 1.5m/70° 2.0m/40°
	Field of View	120°	120°	120°	120°/90°(Side)	120°	120°
	Depth of Field	10-100mm; 5-50mm for 2.8mm/2.2mm probes					
	Viewing Directions	Front View, 90° Side View, Dual Lens					
	Probe Positioning	Damping positioning					
	Articulation	360° joystick control (2-way for 2.2mm probes) with articulation lock					
	Camera Pixels	1 megapixel; 450,000 pixels for 8.0/10.0m probes				300,000 pixels	160,000 pixels
	Image Resolution	1280x720p					
	Photo/Video Format	JPEG/MOV					
	Tube Durability	5 layers of wear-resistant tungsten; 42mm buffer device between tube and handle					
	Environmental	IP67 Dust Proof and Waterproof					

Unit	Display	5.1"; with wide color gamut, HDMI Out, and all sight viewing angle, sunshade design
	Data Transmission	Wi-Fi transmission to mobile phone or computer (Optional); HDMI video output; Micro USB
	Functions	Intelligent processing system with rotation, auto white balance, comparative measurement, negative film, 8x zoom, and exposure control functions
	Languages	English, French, German, Spanish, Japanese, Chinese, Russian, Korean
	Temperature Sensor	Optional high temperature alarm alerts the operator when the temperature rises above 149°F, and shuts down at 176°F
	Battery	Lithium-Ion, 3.7V, 3,200mAhx2
	Power Charge	DC5V, Maximum Current: 1A
	Working Time	≥8h
	Storage	SD Card (Maximum 32GB)
	Weight	1.8 lbs
	Warranty	1 Year on Parts & Labor
	Environmental	IP65 Dust Proof and Splash Proof (Water)



3893 Industrial Ave
Rolling Meadows, IL 60008

www.BergEng.com • 847-577-3980 • Info@BergEng.com