



PRINTFORM
Prototype to Production

CUSTOM MANUFACTURING SOLUTIONS

FROM PROTOTYPE TO PRODUCTION

YOUR SINGLE SOURCE ON DEMAND MANUFACTURING

PrintForm produces build-to-order custom manufactured plastic & metal parts and provides expert service in transitioning customers through the design to manufacturing cycle.



Casting Patterns

PrintForm provides investment casting patterns that assist with foundry castings, and finished master patterns used with silicone and various molding processes.

Rapid Prototyping

Rapid Prototypes are built directly from a 3D CAD file and are ideal to test new designs. This method reduces the time and cost when bringing a new product to market.

Concept Modeling

Early in the design process? Concept models demonstrate new ideas while operating like the finished products.

These models are used to collect feedback and can be presented as promotional material.

End Use Parts

Need 1 custom part or 100,000?

Our services are complemented with additive manufacturing capabilities to produce a variety of materials at any quantity, allowing you immense creative freedom for plastic and metal designs.



MISSION

Our mission is to make it easy for our customers to buy custom designed parts that meet their needs.



SERVICES

SLA



Stereolithography creates parts from 3D CAD data by solidifying and hardening layers of photo-reactive resin.

SLS



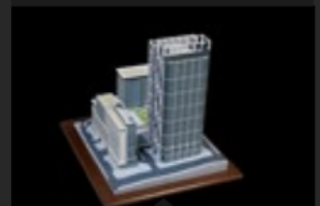
Selective Laser Sintering uses a high-powered CO2 laser to fuse thermoplastics, creating tough and intricate components.

FDM



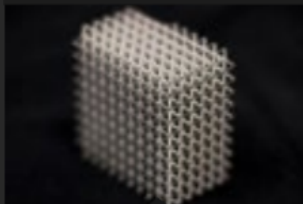
Fused Deposition Modeling uses a nozzle to build parts layer-by-layer by heating and extruding thermoplastic filament.

CJP



Color Jet Printing produces accurate, full color 3D visual models with sandstone-based gypsum powder and a binder.

DMLS



Direct Metal Laser Sintering forms fully functional metal parts by using a laser to micro-weld powdered metals and alloys.

PolyJet



PolyJet is an additive process utilizing liquid photopolymers that are deposited layer by layer and cured with a UV light source.

Cast Urethane



The **Cast Urethane** process produces functional plastic parts by using silicone molds and is ideal for lower quantities of molded parts.

CNC Machining



CNC machining is a subtractive process that removes material using computer-controlled cutters from a block or sheet.

Sheet Metal



Sheet metal creates end use metal parts by using a laser cutter or water jet to create flat blanks, then formed using tools and dies.

Injection Molding



Injection Molding uses molten thermoplastics injected under pressure into an aluminum or steel mold creating thousands of parts.

MJF



Multi Jet Fusion builds plastic parts layer by layer by fusing together powdered Nylon thermoplastic material in record time.

SEND FILES. SELECT PROCESS. PARTS DELIVERED.

INDUSTRIES



Aerospace & Defense

Reducing weight and consolidating the number of parts and designs results in increased efficiency.



Automotive

We accelerate vehicle design by providing prototypes and production parts.



Healthcare & Medical

PrintForm can provide plastic and metal parts for a vast array of medical applications.



Energy

Efficient, sustainable energy sources require quick design and testing with ease and accuracy.



Oil & Gas

Additive manufacturing enhances workflow processes and the production of custom parts.



Architecture

PrintForm provides full color models through the CJP process, which can include terrain, water and trees, etc.



Consumer Products

Applications ranging from home appliances to hand held electronic devices, we provide solutions ranging from concept models to end use parts.

HEADQUARTERS

100 North Point Center East, Suite 125
Alpharetta, GA 30022 USA

Phone: +1 404-692-5500

Fax: +1 678-348-7664

Sales:

quote@PrintForm.com

General Inquiries:

info@PrintForm.com

JOIN THE CONVERSATION



Instagram: [@print_form](https://www.instagram.com/print_form)



LinkedIn: [@printform](https://www.linkedin.com/company/printform)



Facebook: [@PrintFormMFG](https://www.facebook.com/PrintFormMFG)



Twitter: [@printformtech](https://twitter.com/printformtech)