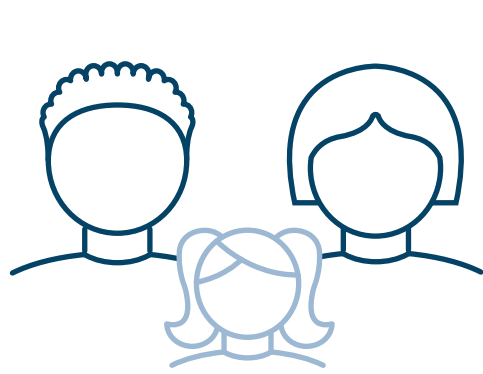


BHCOE GIVES THE AUTISM FIELD A NEEDED BOOST IN MEASURING TREATMENT OUTCOMES

A First-of-Its-Kind Tool That Promotes Adoption of Common Measures To Establish the Value of Applied Behavior Analysis (ABA) Treatment



PATIENTS, PARENTS, PROVIDERS, PAYORS AND INVESTORS BENEFIT

ABA HAS GROWN RAPIDLY WITHOUT COMMONLY ADOPTED OUTCOME MEASURES.

[IT'S ESTIMATED ABA THERAPY WILL BECOME A \$2.2 BILLION CATEGORY IN 2022]

CURRENTLY

Highly Individualized Data for Comparing Outcomes

WHERE WE ARE HEADED

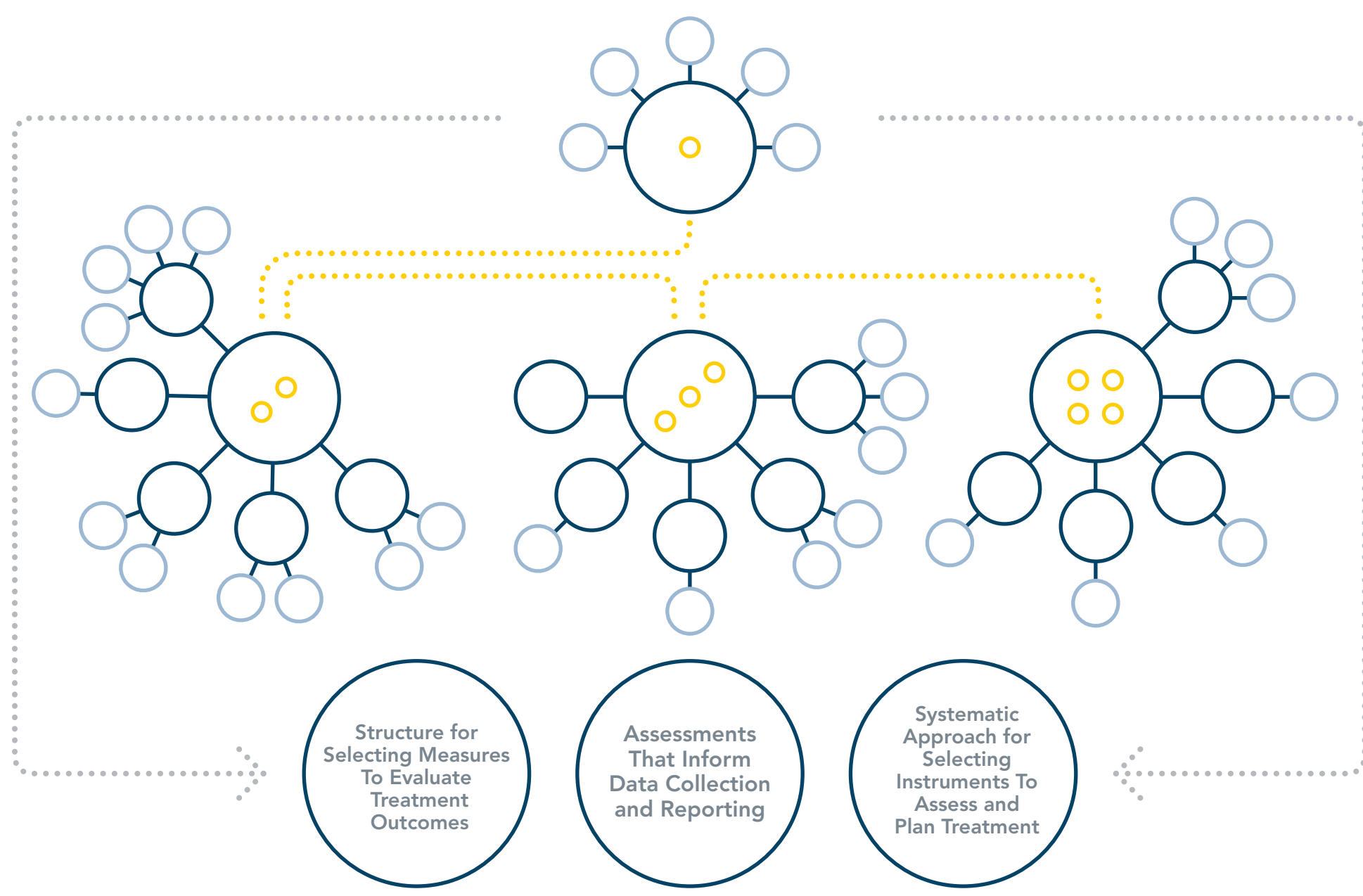
Standardized Measurement Tools for Comparing Outcomes

"This represents a major turning point for the ABA profession."

Sara Gershfeld Litvak
Chief Executive Officer
BHCOE

"If behavior analysts use the same measures and collect common data, we can compare outcomes across patients and providers to gain the evidence needed to support equitable access, quality, and training."

INTRODUCING THE BHCOE ABA OUTCOMES FRAMEWORK™



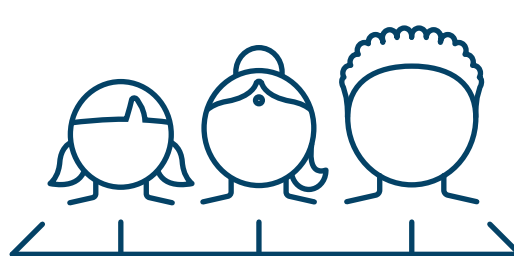
THE ASSESSMENT TOOLS IN THE BHCOE ABA OUTCOMES FRAMEWORK MEET CRITERIA FOR:



RELIABILITY



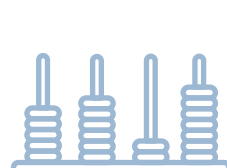
VALIDITY



APPLICATION TO THE BROAD AGE RANGE OF PEOPLE WITH AUTISM



COST AND TIME EFFICIENCY TO ADMINISTER



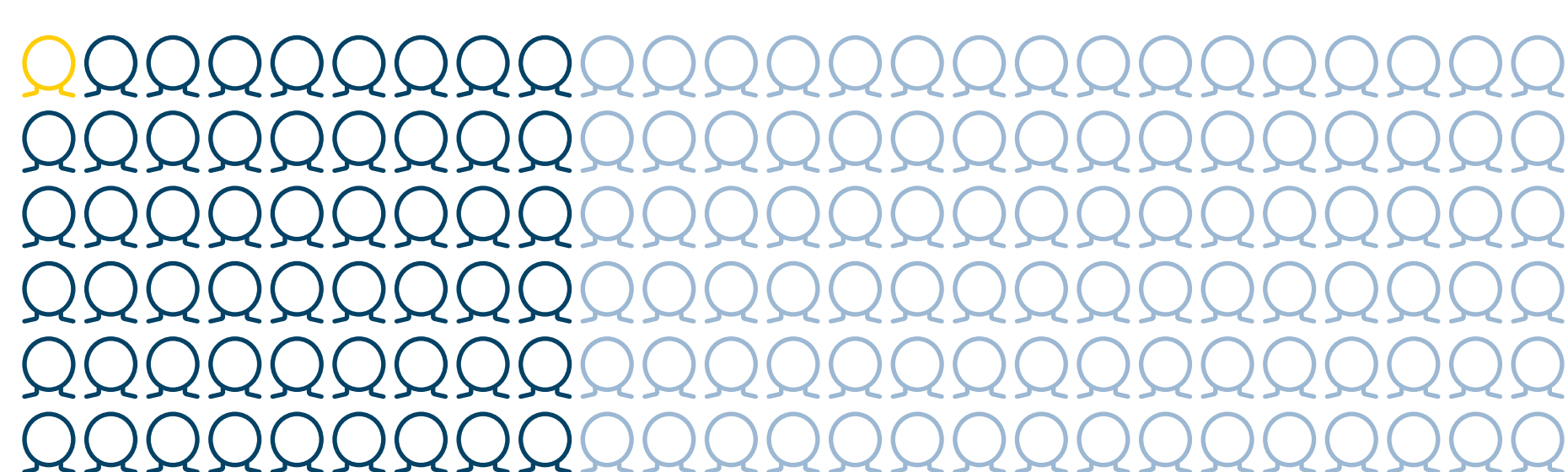
Tools in the BHCOE ABA Outcomes Framework Were Determined Using:

COSMIN

A method for selecting the most suitable outcome measurement instruments in research and clinical practice.

"Committing to a systematic approach for selecting assessment instruments promotes large-scale, cross-patient comparison of changes in patients' skills and quality of life and allows for a global analysis of the impact of ABA treatment."

Ellie Kazemi, PhD, BCBA-D
Chief Science Officer
BHCOE



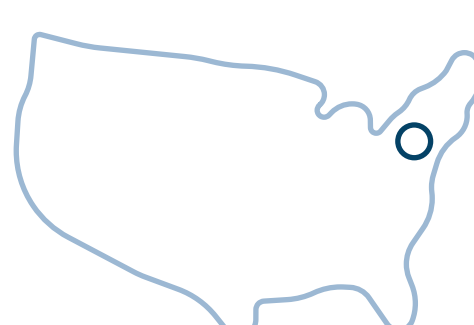
ONE IN 54 CHILDREN LIVE WITH AUTISM TODAY, AND ABA NOW MAKES UP MORE THAN HALF OF THE SERVICES BEING PROVIDED.

VERSUS ONE IN 150 IN THE YEAR 2000.

4%

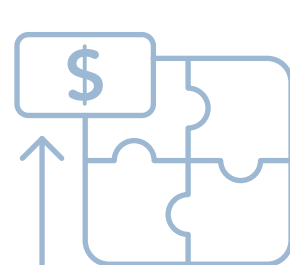
RATE EACH YEAR THAT ABA IS EXPECTED TO CONTINUE ITS RISE AS THE FIRST CHOICE OF TREATMENT FOR AUTISM

CURRENTLY, ONLY ONE U.S. STATE WITH ENOUGH CERTIFIED PROVIDERS TO MEET PATIENT DEMAND.



\$1.4M- \$2.4M

AVERAGE COST OF RAISING AN INDIVIDUAL WITH AUTISM SPECTRUM DISORDER THROUGH THEIR LIFESPAN



MEDICAL EXPENDITURES FOR CHILDREN AND ADOLESCENTS WITH AUTISM

ARE ON AVERAGE 4.1 TO 6.2 TIMES GREATER THAN THOSE WITHOUT AUTISM.

\$233K

AVERAGE COST OF RAISING AN INDIVIDUAL WITHOUT DISABILITIES THROUGH THEIR LIFESPAN



ABOUT BHCOE

Behavioral Health Center of Excellence® (BHCOE®) is an organization within the autism field that is dedicated to leading evidence-based quality improvement of equitable Applied Behavior Analysis (ABA) through its creation of performance-based standards for providers, learning and improvement resources for all stakeholders, and as the only international accreditor for the field. To learn more about BHCOE visit www.bhcoe.org.