

NATINA STEEL SOLUTION

NATURAL. RESILIENT. DISTINGUISHED.

GUARDRAIL WITH NATINA
in Palm Desert, California

NATINA STEEL SOLUTION naturally reacts with galvanized metal and develops into a mottled and rustic, brown finish. Our skilled team expertly applies Natina on galvanized steel surfaces for brown tones that lasts for years. We're changing the way you see construction with:

- A **better alternative** to weathering steel
- Enhancing, blending and making steel **more natural** around the surrounding landscape
- **Resilient, natural brown hues** that won't fade, crack or peel

- **More affordable** option than paint, powder coating and weathering steel
- **Little to no maintenance**
- **Natural, environmentally-safe ingredients**

CHECK OUT SOME OF OUR FAVORITE PROJECTS BELOW.



CHAIN-LINK

CHAIN-LINK FENCE AND POSTS
treated with Natina at American Family Fields of Phoenix



CABLE & CONCRETE

PEDESTRIAN CABLE AND CONCRETE
Natina treated at Peaks to Plains Trail near Denver, Colorado



CABLE FENCE

Natina finish on **CABLE FENCE**
in San Diego, California



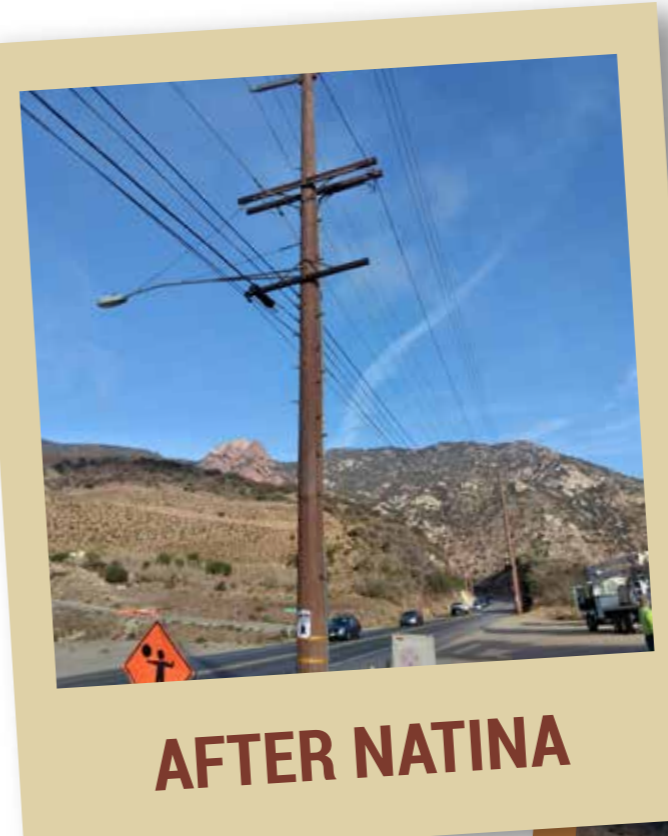
TRANSMISSION TOWERS

Natina applied to the **TRANSMISSION TOWERS** for Sunrise Powerlink Transmission Project in California

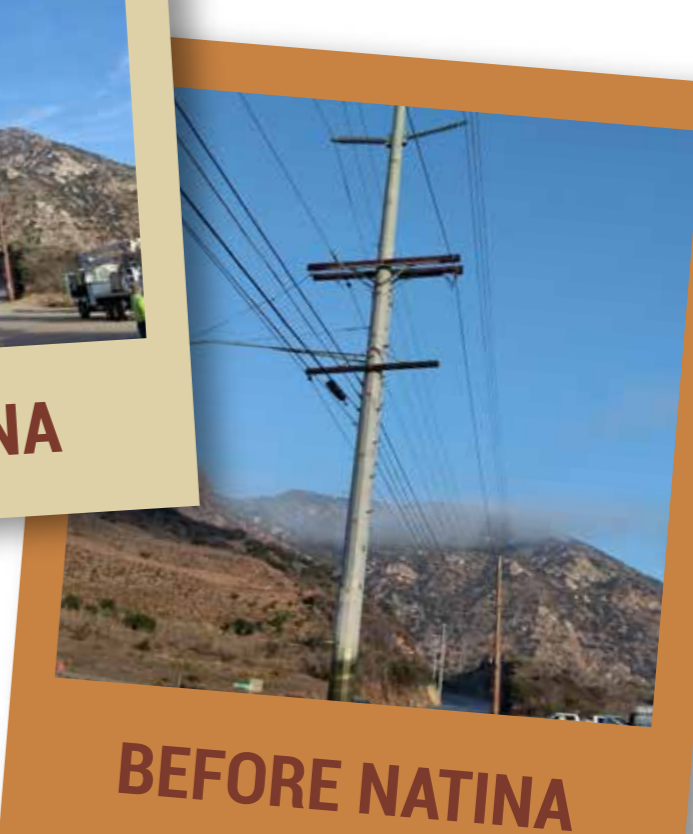
NATURALLY COLOR TRANSMISSION TOWERS

Southern California Edison (SCE) built transmission structures along Mulholland Highway and needed a solution to minimize their visual impact in Malibu. Natina's beautiful, rustic brown finish blends in perfectly along this scenic highway and will cover about 65 poles when completed. Standing from afar, you can barely see the transmission poles which now complements the natural surroundings.

Unlike traditional colorants (i.e. paints, stains, powder coating), Natina is a natural reactive process with lasting color that has the strength of galvanized and will not fade, crack, or peel.



AFTER NATINA



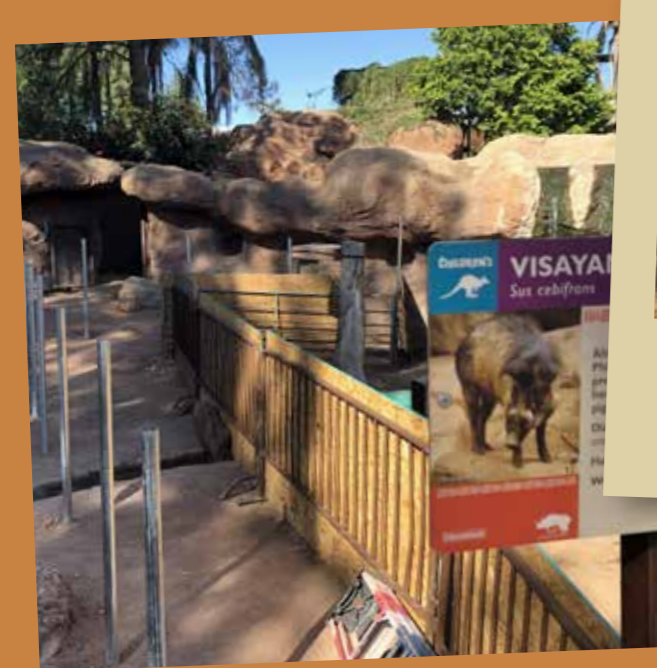
BEFORE NATINA

PROJECT NAME:

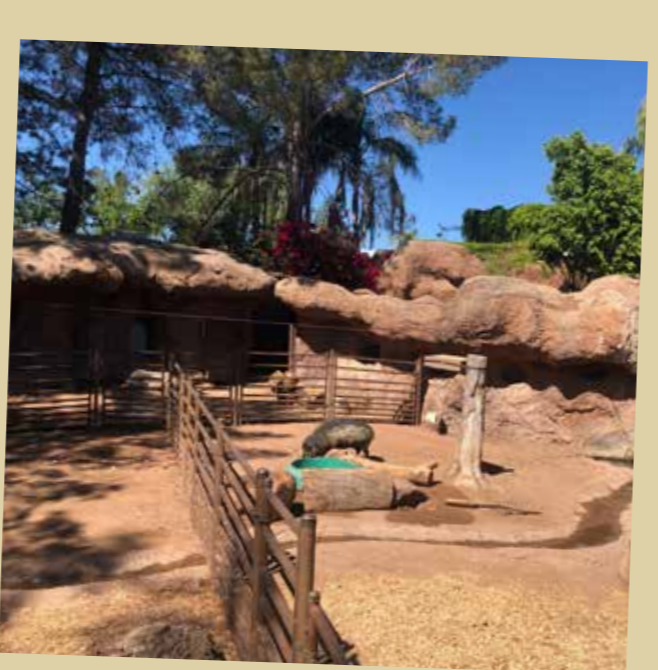
Malibu Canyon Pole Remediation

MATERIALS APPLIED WITH NATINA:

Transmission poles and all hardware



BEFORE NATINA



AFTER NATINA

LONG-LASTING, NATURAL COLOR IN THE ZOO

The Phoenix Zoo contacted Natina to find a natural, non-toxic colorant for the warty pig exhibit. Natina was approved and reviewed by their zoologist to ensure the pigs would be safe around the product. Additionally, they wanted the metal fence finish to complement the zoo's landscaping and last for years. With the pigs brushing against the fencing, the color blended in perfectly and gave them, and the patrons, a beautiful enclosure.

PROJECT NAME:

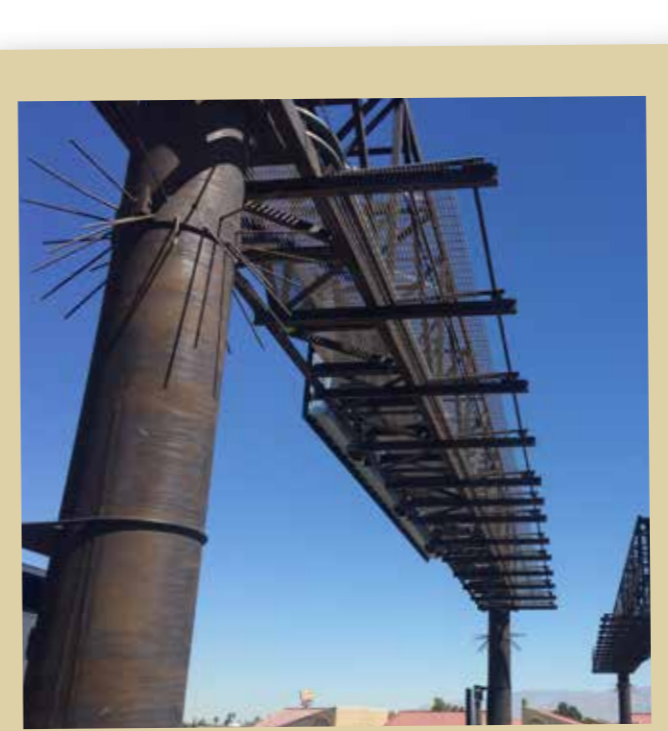
Warty Pig

MATERIALS APPLIED WITH NATINA:

Metal poles, fencing and all hardware including end caps

BEAUTY IN THE DESERT

Natina and the Nevada Department of Transportation (NDOT) joined forces on one of the largest public works overhead in Nevada's history, Project NEON. With large overhead sign structures along iconic Interstate 15 and the "Spaghetti Bowl" interchange in downtown Las Vegas, aesthetics were important and played a vital role in using Natina. They determined the rustic brown finish was the best solution for the galvanized structures which complement the picturesque mountains and desert landscaping. Since this is the busiest highway in Nevada, NDOT wanted a low maintenance option to mitigate traffic delays and need for touch-ups. Natina is excited to be part of the advancement of this major highway.



AFTER NATINA



BEFORE NATINA

PROJECT NAME:

Project NEON

MATERIALS APPLIED WITH NATINA:

Sign structures, light poles, traffic signals, guardrail, cable barriers, chain-link fence and all hardware

Contact us to find out how we can color your project.

866-797-6589 | info@natina.com

