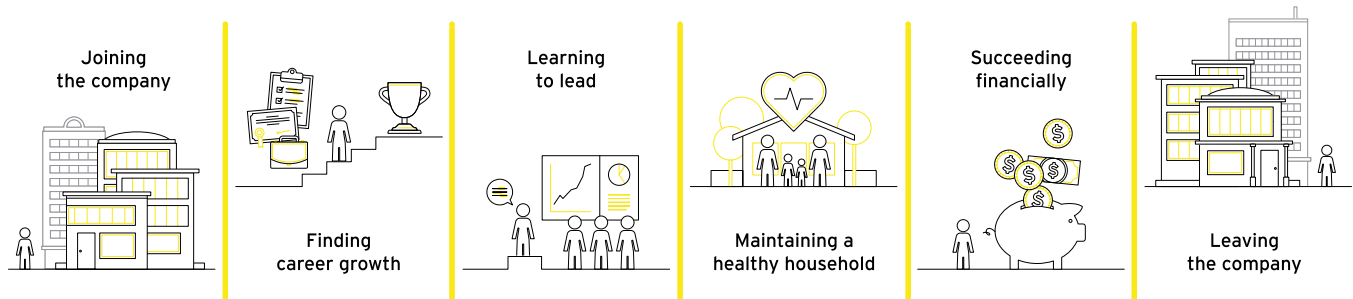


evive

Evive changes the way companies communicate.

As the market leader in data-driven, personalized engagement, Evive helps large and midsize companies optimize the employee experience across their diverse populations.

Starting with rich healthcare and HR data sources, Evive uses proprietary predictive analytics and behavioral science to deliver highly segmented, multi-modal messaging (e.g., text, email, push notification) that connects the right person to the right resource at the right time across the entire employee journey:



Each personalized message drives individual action and provides measurable outcomes, from health and well-being recommendations around specific care to financial recommendations for health savings accounts or retirement savings.

History

Evive was founded in 2007 when Peter Saravis and Prashant Srivastava recognized two problems:

- 1 Healthcare was moving toward a consumer model, but there wasn't anything consumer-friendly about healthcare benefits.
- 2 Employers spent significant capital on competitive benefits to attract top talent, but employees weren't utilizing their benefits.

Saravis and Srivastava started Evive, leveraging big data and predictive analytics to transform the employee benefits experience. Today, Evive's solutions empower millions of employees to take advantage of all of their employee benefits.

Press contact:

Jake Kirsch

Connect Communications

(224) 545-9314

Jake@connectcomsinc.com

Mission

Evive delivers data-driven, personalized recommendations so that employees take the actions needed to live their healthiest, happiest lives.

Vision

Evive improves the lives of employees and their families by communicating to them in the moments that matter most.

Leadership



Prashant Srivastava
Co-Founder, President, CEO



Peter Saravis
Co-Founder, Executive Chairman



Adam Kanouse
Chief Technology Officer



John McDonnell
Chief Operating Officer



Justin Raniszkeski
Chief Revenue Officer



Daya Kori
Managing Director,
Software R&D Center

Employees

200

Clients

SANOFI  **Gap Inc.**

 **BOEING** **AVON**

Walgreens 

and many more.

Key differentiators

- The Evive platform collects information from numerous data sources, analyzes the data using behavioral science and predictive analytics to deliver timely, relevant, personalized messaging to employees and their spouses, using their elected mode of communication (text message, email, push notification).
- The platform can micro-segment audiences based on health and Rx claims, daily habits and behavioral data, firmographic and demographic information, to deliver personalized and timely outreach, instead of mass campaigns.
- Messages are hyper-personalized to inspire action and engagement, freeing up time so HR can focus on strategy, not execution.
- If an employee, spouse or dependent takes action, the prompt is turned off as soon as data shows action and a new recommendation is delivered using the same personalized data information.
- If the message doesn't drive engagement, Evive analyzes, optimizes, reprioritizes and uses machine learning to surface new communication recommendations that reminds employees to take action.

Milestones

2007

Evive is founded to make health-care more consumer-friendly.

2016

54% annualized growth and doubles the size of its office.

2017

Celebrates 10th anniversary and expands leadership team.

2018

Susquehanna Growth Equity LLC invests \$43 million to help Evive expand.

2020

Evive acquires WiserTogether, a tool that helps people quickly find the right treatment based on the user's symptoms, conditions and claims data.

Events, accolades, volunteerism + coverage

- Evive speaks, sponsors and participates in industry conferences and events: The Business Group on Health Annual Summit, The Conference Board Annual Employee Health Care Conference, Benefits Forum & Expo, and Health & Benefits Leadership Conference.
- Evive has won awards by several organizations: 2021 Built in Chicago's "Best Places to Work in Chicago" and "Best Midsize Places to Work," 2020 Built in Chicago's lists of "Best Midsize Companies to Work For" and "Companies with the Best Benefits," and Best Tech for Good by the Chicago tech community in the 2020 Timmy Awards.
- Evive is often featured in various mainstream and trade media: Forbes, Diversity Inc., HR Drive and HR Technologist.
- Evive supports multiple charities and nonprofit organizations through volunteerism and donations: Greater Chicago Food Depository, ChiCat Academy, The Posse Foundation, IMD Guest House and Girls Who Code.
- Evive employees started a green initiative to reduce their ecological footprints as an office and in their personal lives.

evive

goevive.com

600 West Van Buren Street | Suite 400 | Chicago, Illinois 60607 | 312.824.6653

