



We help manufacturers design faster...
and manufacture better



CAD/PLM/PDM
TO ERP
INTEGRATION

IMPROVES ENGINEERING THROUGHPUT BY UP TO 25%

Bidirectional, real-time, intelligent data validation, populating and transformation eliminates the terrible waste of brains assigned to tedious, unproductive tasks.

QUICK RETURN ON INVESTMENT

Yielding an unusually high ROI, Agni Link typically pays for itself within 3-6 months in ETO-intensive environments. The ROI mainly results from:

- Virtually eliminating manual and/or erratic transfer of data
- Dramatic reduction of errors on the factory floor, as a result of increased BoM accuracy
- Low TCO (Total Cost of Ownership) of the solution, due to self-reliance of customers (low-code / no-code customization)

GUARANTEED ON-BUDGET IMPLEMENTATION

With Elmo Solutions' turnkey implementation programs, configuration and deployment are done for a fixed fee, no matter how complex your requirements are. Also includes custom-tailored integration, as well as all the tools (Integration Builder) needed to enhance and maintain the custom integration in the future.

Guaranteed cost... Guaranteed peace of mind!

FULL CONTROL... AND NO PROGRAMMING NEEDED!

With Agni Link, you have full control over the integration process: add as many mappings as you like, add data transformation, customize integrations on your own, based on your own rules, all with no... programming... ever!

MACHINE LEARNING-BASED AI ENGINE

Other than Agni Link, none of the other currently available solutions take advantage of the properties of true Artificial Intelligence, such as:

- Learning
- Data pattern recognition
- Adaptability
- Reactivity



WHERE INDUSTRY 4.0 BEGINS



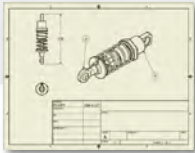
Agni Link is a companion application to CAD/PLM/PDM software that establishes a live bidirectional connection between product data and its counterpart in the manufacturing management (ERP) environment.

FEATURES

- Simultaneous creating / update of product data:
 - Parts / Assemblies
 - Bills of Materials
 - Routings
 - Revisions
 - Attachments
 - Much more
- Powerful AI-based SmartBridge Engine
- Unlimited number of mappings
- Fully customer-customizable (No-code/Low-code)
- Automatic data validation against acceptable values found in ERP system
- On-the-fly printing and generation of drawings in any format
- Supports any ERP application
- Powerful data editing (find, search, & replace, copy & paste) capabilities
- Makes ERP data accessible to CAD users (e.g. costing, vendor, availability)
- Entirely customer-configurable... without programming!

CAD/PDM/PLM

Reduce lead time by up to 20%
Overcome manpower shortage
Eliminate BOM data transcription



ERP

Improved BOM Accuracy
Less Rework
Better Raw Materials Yield



Rapid ROI
Up and Running in 30 Days... or less!
Fixed-fee implementation support

CAD/PLM/PDM MAIN PLATFORMS SUPPORTED



[Click here for the complete list of CAD/PLM/PDM and ERP systems supported by Agni Link](#)